

Product datasheet for **TA803067**

CD68 Mouse Monoclonal Antibody [Clone ID: OTI12C5]

Product data:

Product Type:	Primary Antibodies
Clone Name:	OTI12C5
Applications:	IHC, WB
Recommended Dilution:	WB 1:2000
Reactivity:	Human
Host:	Mouse
Isotype:	IgG1
Clonality:	Monoclonal
Immunogen:	Human recombinant protein fragment corresponding to amino acids 22-319 of human CD68 (NP_001242) produced in SF9 cell.
Formulation:	PBS (pH 7.3) containing 1% BSA, 50% glycerol and 0.02% sodium azide.
Concentration:	1 mg/ml
Purification:	Purified from mouse ascites fluids or tissue culture supernatant by affinity chromatography (protein A/G)
Conjugation:	Unconjugated
Storage:	Store at -20°C as received.
Stability:	Stable for 12 months from date of receipt.
Gene Name:	CD68 molecule
Database Link:	NP_001242 Entrez Gene 968 Human P34810



[View online »](#)

Background:

This gene encodes a 110-kD transmembrane glycoprotein that is highly expressed by human monocytes and tissue macrophages. It is a member of the lysosomal/endosomal-associated membrane glycoprotein (LAMP) family. The protein primarily localizes to lysosomes and endosomes with a smaller fraction circulating to the cell surface. It is a type I integral membrane protein with a heavily glycosylated extracellular domain and binds to tissue- and organ-specific lectins or selectins. The protein is also a member of the scavenger receptor family. Scavenger receptors typically function to clear cellular debris, promote phagocytosis, and mediate the recruitment and activation of macrophages. Alternative splicing results in multiple transcripts encoding different isoforms. [provided by RefSeq, Jul 2008]

Synonyms:

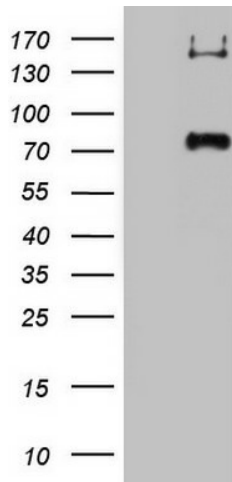
GP110; LAMP4; SCARD1

Protein Families:

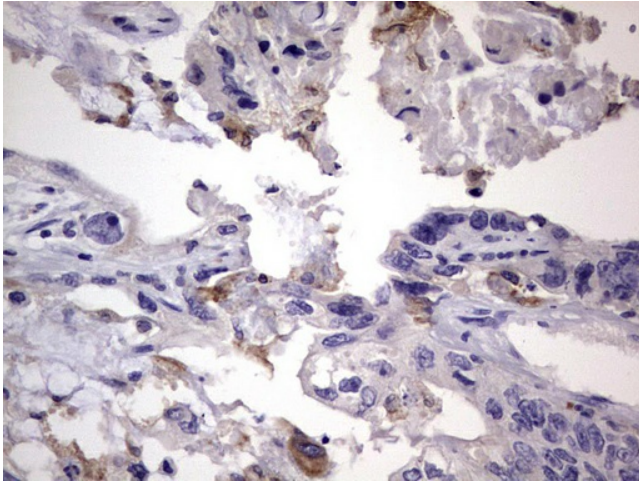
Druggable Genome, Transmembrane

Protein Pathways:

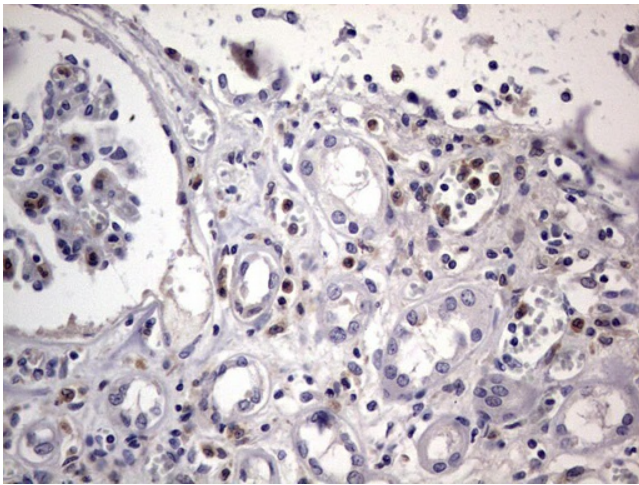
Lysosome

Product images:

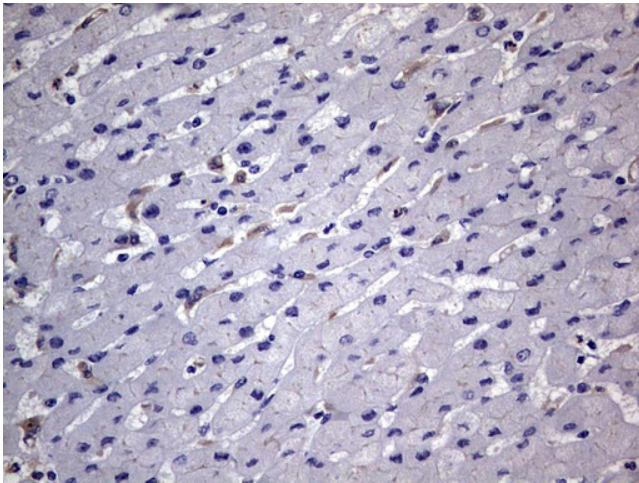
HEK293T cells were transfected with the pCMV6-ENTRY control (Left lane) or pCMV6-ENTRY CD68 ([RC200392], Right lane) cDNA for 48 hrs and lysed. Equivalent amounts of cell lysates (5 ug per lane) were separated by SDS-PAGE and immunoblotted with anti-CD68. Positive lysates [LY420047] (100ug) and [LC420047] (20ug) can be purchased separately from OriGene.



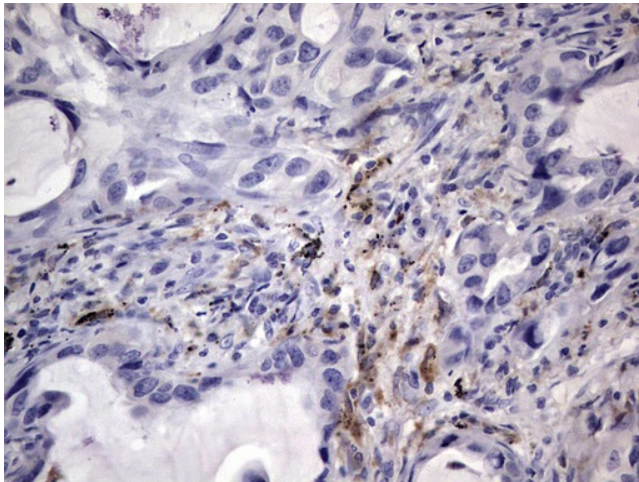
Immunohistochemical staining of paraffin-embedded Adenocarcinoma of Human colon tissue using anti-CD68 mouse monoclonal antibody. (TA803067) Dilution: 1:150



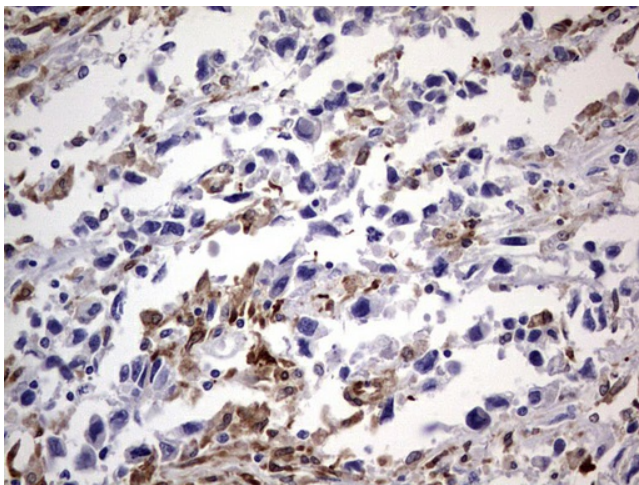
Immunohistochemical staining of paraffin-embedded Human Kidney tissue within the normal limits using anti-CD68 mouse monoclonal antibody. (TA803067) Dilution: 1:150



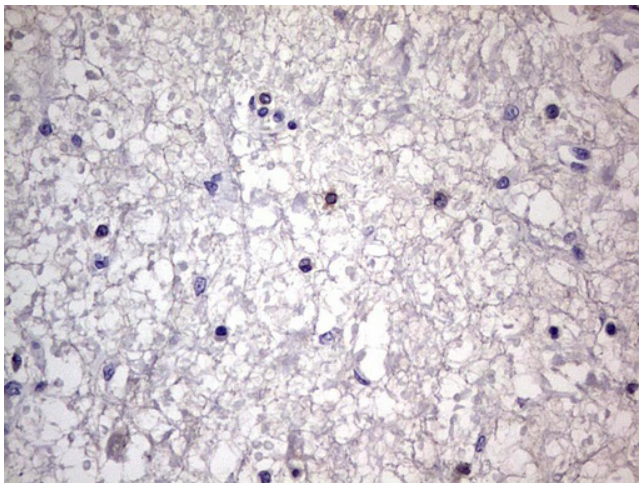
Immunohistochemical staining of paraffin-embedded Human liver tissue within the normal limits using anti-CD68 mouse monoclonal antibody. (TA803067) Dilution: 1:150



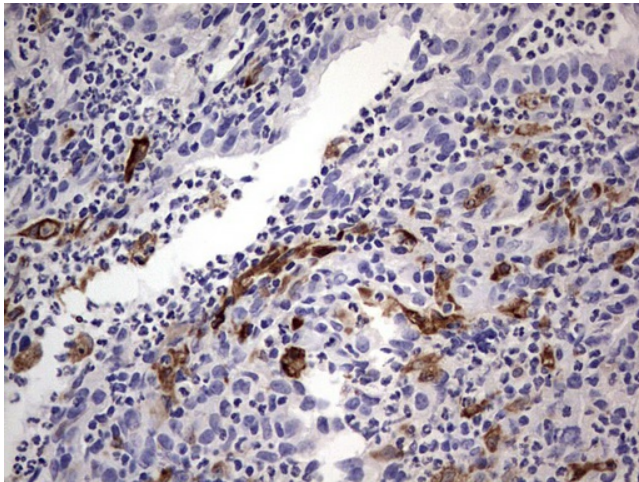
Immunohistochemical staining of paraffin-embedded Carcinoma of Human lung tissue using anti-CD68 mouse monoclonal antibody. (TA803067) Dilution: 1:150



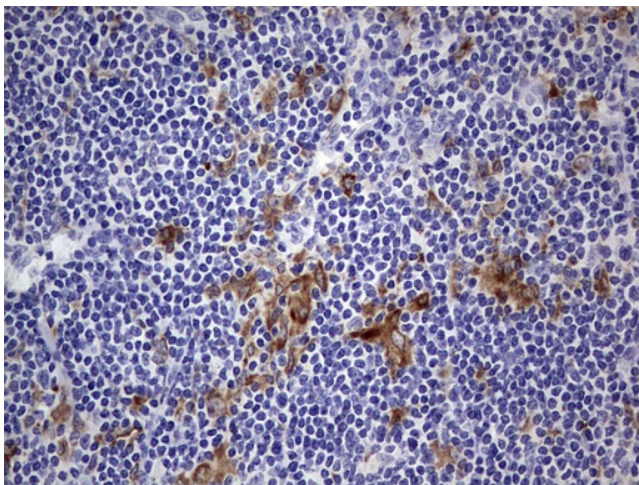
Immunohistochemical staining of paraffin-embedded Adenocarcinoma of Human ovary tissue using anti-CD68 mouse monoclonal antibody. (TA803067) Dilution: 1:150



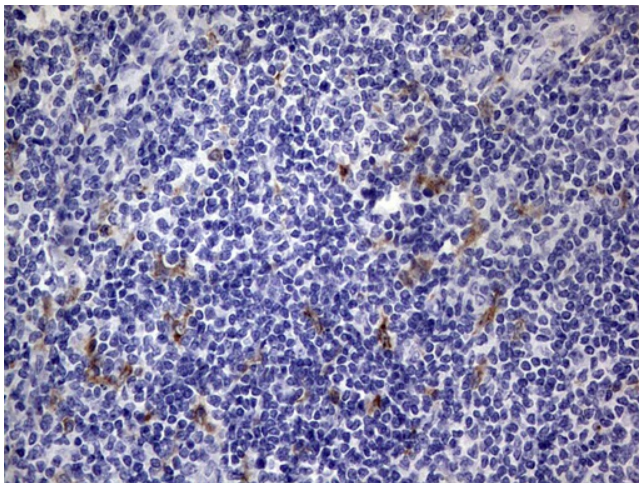
Immunohistochemical staining of paraffin-embedded Human bladder tissue within the normal limits using anti-CD68 mouse monoclonal antibody. (TA803067) Dilution: 1:150



Immunohistochemical staining of paraffin-embedded Human lymph node tissue within the normal limits using anti-CD68 mouse monoclonal antibody. (TA803067) Dilution: 1:150



Immunohistochemical staining of paraffin-embedded Human lymphoma tissue using anti-CD68 mouse monoclonal antibody. (TA803067) Dilution: 1:150



Immunohistochemical staining of paraffin-embedded Human tonsil within the normal limits using anti-CD68 mouse monoclonal antibody. (TA803067) Dilution: 1:150