

Product datasheet for **TA802742S**

DOT1L Mouse Monoclonal Antibody [Clone ID: OTI1F1D4]

Product data:

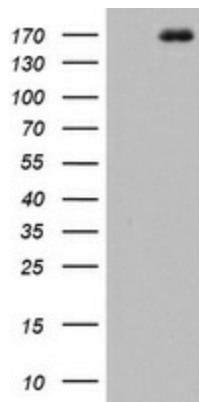
Product Type:	Primary Antibodies
Clone Name:	OTI1F1D4
Applications:	IHC, WB
Recommended Dilution:	WB 1:2000, IHC 1:150
Reactivity:	Human
Host:	Mouse
Isotype:	IgG1
Clonality:	Monoclonal
Immunogen:	Human recombinant protein fragment corresponding to amino acids 1008-1424 of human DOT1L (NP_115871) produced in E.coli.
Formulation:	PBS (pH 7.3) containing 1% BSA, 50% glycerol and 0.02% sodium azide.
Concentration:	1 mg/ml
Purification:	Purified from mouse ascites fluids or tissue culture supernatant by affinity chromatography (protein A/G)
Conjugation:	Unconjugated
Storage:	Store at -20°C as received.
Stability:	Stable for 12 months from date of receipt.
Predicted Protein Size:	164.7 kDa
Gene Name:	DOT1 like histone lysine methyltransferase
Database Link:	NP_115871 Entrez Gene 84444 Human Q8TEK3
Background:	The protein encoded by this gene is a histone methyltransferase that methylates lysine-79 of histone H3. It is inactive against free core histones, but shows significant histone methyltransferase activity against nucleosomes. [provided by RefSeq, Aug 2011]
Synonyms:	DOT1; KMT4
Protein Families:	Druggable Genome



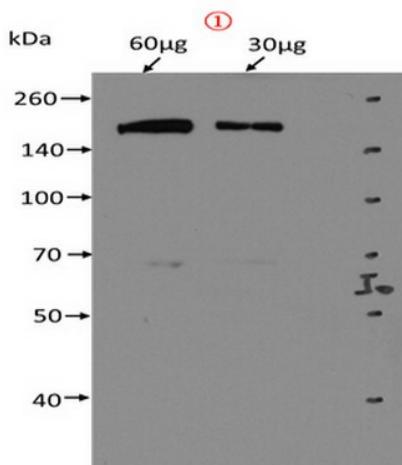
[View online »](#)

Protein Pathways: Lysine degradation

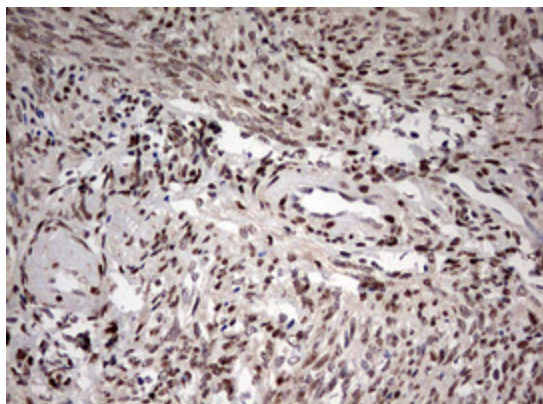
Product images:



HEK293T cells were transfected with the pCMV6-ENTRY control (Left lane) or pCMV6-ENTRY DOT1L ([RC218547], Right lane) cDNA for 48 hrs and lysed. Equivalent amounts of cell lysates (5 ug per lane) were separated by SDS-PAGE and immunoblotted with anti-DOT1L. Positive lysates [LY410109] (100ug) and [LC410109] (20ug) can be purchased separately from OriGene.



Western blot analysis of extracts from U2oS by using anti-DOT1L monoclonal antibody (1:500). Data submitted by an anonymous customer.



Immunohistochemical staining of paraffin-embedded Human endometrium tissue within the normal limits using anti-DOT1L mouse monoclonal antibody. (Heat-induced epitope retrieval by 10mM citric buffer, pH6.0, 120°C for 3min, [TA802742])