

Product datasheet for **TA802336**

AREB6 (ZEB1) Mouse Monoclonal Antibody [Clone ID: OTI8H8]

Product data:

| | |
|--------------------------------|---|
| Product Type: | Primary Antibodies |
| Clone Name: | OTI8H8 |
| Applications: | WB |
| Recommended Dilution: | WB 1:2000 |
| Reactivity: | Human, Mouse, Rat |
| Host: | Mouse |
| Isotype: | IgG1 |
| Clonality: | Monoclonal |
| Immunogen: | Human recombinant protein fragment corresponding to amino acids 1-350 of human ZEB1 (NP_110378) produced in E.coli. |
| Formulation: | PBS (pH 7.3) containing 1% BSA, 50% glycerol and 0.02% sodium azide. |
| Concentration: | 1 mg/ml |
| Purification: | Purified from mouse ascites fluids or tissue culture supernatant by affinity chromatography (protein A/G) |
| Conjugation: | Unconjugated |
| Storage: | Store at -20°C as received. |
| Stability: | Stable for 12 months from date of receipt. |
| Predicted Protein Size: | 123.9 kDa |
| Gene Name: | zinc finger E-box binding homeobox 1 |
| Database Link: | NP_110378 Entrez Gene 21417 Mouse Entrez Gene 25705 Rat Entrez Gene 6935 Human P37275 |
| Background: | This gene encodes a zinc finger transcription factor. The encoded protein likely plays a role in transcriptional repression of interleukin 2. Mutations in this gene have been associated with posterior polymorphous corneal dystrophy-3 and late-onset Fuchs endothelial corneal dystrophy. Alternatively spliced transcript variants encoding different isoforms have been described. [provided by RefSeq, Mar 2010] |

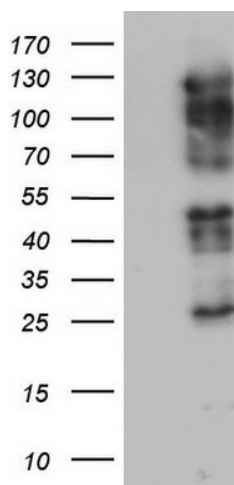


[View online »](#)

Synonyms: AREB6; BZP; DELTAEF1; FECD6; NIL2A; PPCD3; TCF8; ZFHEP; ZFHX1A

Protein Families: Transcription Factors

Product images:



HEK293T cells were transfected with the pCMV6-ENTRY control (Left lane) or pCMV6-ENTRY ZEB1 (RC217704), Right lane) cDNA for 48 hrs and lysed. Equivalent amounts of cell lysates (5 ug per lane) were separated by SDS-PAGE and immunoblotted with anti-ZEB1. Positive lysates [LY403073] (100ug) and [LC403073] (20ug) can be purchased separately from OriGene.