

## Product datasheet for **TA801781**

### PIK3CD Mouse Monoclonal Antibody [Clone ID: OTI1B5]

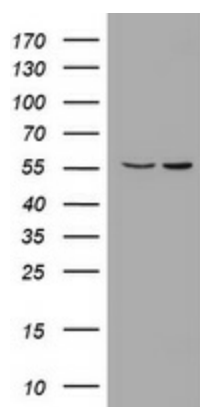
#### Product data:

|                         |   |
|-------------------------|---|
| Product Type:           | Primary Antibodies  |
| Clone Name:             | OTI1B5  |
| Applications:           | IHC, WB   |
| Recommended Dilution:   | WB 1:2000, IHC 1:150  |
| Reactivity:             | Human, Mouse, Rat   |
| Host:                   | Mouse   |
| Isotype:                | IgG2b   |
| Clonality:              | Monoclonal  |
| Immunogen:              | Human recombinant protein fragment corresponding to amino acids 286-610 of human PIK3CD (NP_005017) produced in E.coli.   |
| Formulation:            | PBS (pH 7.3) containing 1% BSA, 50% glycerol and 0.02% sodium azide.  |
| Concentration:          | 1 mg/ml   |
| Purification:           | Purified from mouse ascites fluids or tissue culture supernatant by affinity chromatography (protein A/G)   |
| Conjugation:            | Unconjugated  |
| Storage:                | Store at -20°C as received.   |
| Stability:              | Stable for 12 months from date of receipt.  |
| Predicted Protein Size: | 119.3 kDa   |
| Gene Name:              | phosphatidylinositol-4,5-bisphosphate 3-kinase catalytic subunit delta  |
| Database Link:          | <a href="#">NP_005017</a><br><a href="#">Entrez Gene 18707 Mouse</a> <a href="#">Entrez Gene 366508 Rat</a> <a href="#">Entrez Gene 5293 Human</a><br><a href="#">O00329</a>  |
| Background:             | Phosphoinositide 3-kinases (PI3Ks) phosphorylate inositol lipids and are involved in the immune response. The protein encoded by this gene is a class I PI3K found primarily in leukocytes. Like other class I PI3Ks (p110-alpha p110-beta, and p110-gamma), the encoded protein binds p85 adapter proteins and GTP-bound RAS. However, unlike the other class I PI3Ks, this protein phosphorylates itself, not p85 protein. [provided by RefSeq, Jul |

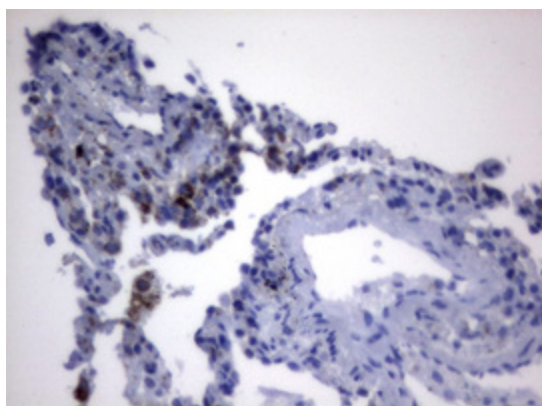


[View online »](#)

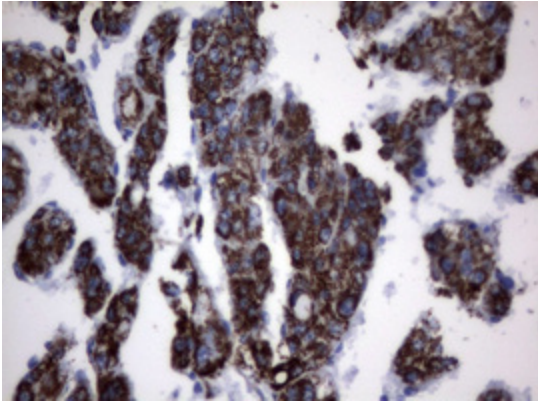
|                          |  |
|--------------------------|--|
| <b>Synonyms:</b>         | APDS; IMD14; IMD14A; IMD14B; p110D; P110DELTA; PI3K; ROCHIS  |
| <b>Protein Families:</b> | Druggable Genome   |
| <b>Protein Pathways:</b> | Acute myeloid leukemia, Apoptosis, B cell receptor signaling pathway, Chemokine signaling pathway, Chronic myeloid leukemia, Colorectal cancer, Endometrial cancer, ErbB signaling pathway, Fc epsilon RI signaling pathway, Fc gamma R-mediated phagocytosis, Focal adhesion, Glioma, Inositol phosphate metabolism, Insulin signaling pathway, Jak-STAT signaling pathway, Leukocyte transendothelial migration, Melanoma, mTOR signaling pathway, Natural killer cell mediated cytotoxicity, Neurotrophin signaling pathway, Non-small cell lung cancer, Pancreatic cancer, Pathways in cancer, Phosphatidylinositol signaling system, Progesterone-mediated oocyte maturation, Prostate cancer, Regulation of actin cytoskeleton, Renal cell carcinoma, Small cell lung cancer, T cell receptor signaling pathway, Toll-like receptor signaling pathway, Type II diabetes mellitus, VEGF signaling pathway |

**Product images:**

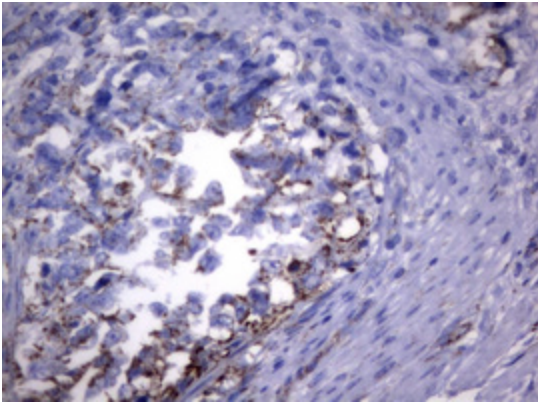
E.coli lysate (left lane) and E.coli lysate expressing Human recombinant protein fragment (right lane) corresponding to amino acids 286-610 of human PIK3CD (NP\_005017).



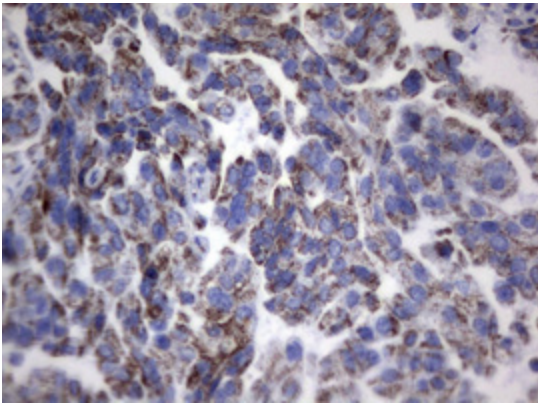
Immunohistochemical staining of paraffin-embedded Carcinoma of Human lung tissue using anti-PIK3CD mouse monoclonal antibody. (Heat-induced epitope retrieval by 1mM EDTA in 10mM Tris, pH8.5, 120°C for 3min, TA801781)



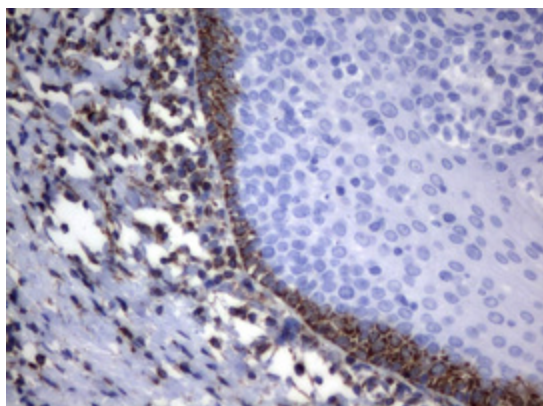
Immunohistochemical staining of paraffin-embedded Carcinoma of Human pancreas tissue using anti-PIK3CD mouse monoclonal antibody. (Heat-induced epitope retrieval by 1mM EDTA in 10mM Tris, pH8.5, 120°C for 3min, TA801781)



Immunohistochemical staining of paraffin-embedded Adenocarcinoma of Human endometrium tissue using anti-PIK3CD mouse monoclonal antibody. (Heat-induced epitope retrieval by 1mM EDTA in 10mM Tris, pH8.5, 120°C for 3min, TA801781)



Immunohistochemical staining of paraffin-embedded Carcinoma of Human bladder tissue using anti-PIK3CD mouse monoclonal antibody. (Heat-induced epitope retrieval by 1mM EDTA in 10mM Tris, pH8.5, 120°C for 3min, TA801781)



Immunohistochemical staining of paraffin-embedded Human tonsil within the normal limits using anti-PIK3CD mouse monoclonal antibody. (Heat-induced epitope retrieval by 1mM EDTA in 10mM Tris, pH8.5, 120°C for 3min, TA801781)