

## Product datasheet for **TA801704**

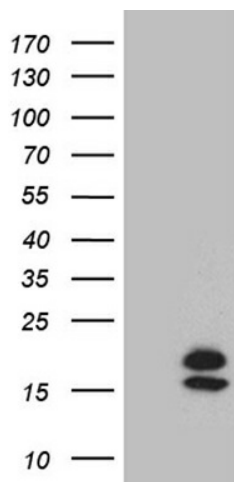
### **GCDFP 15 (PIP) Mouse Monoclonal Antibody [Clone ID: OTI5E6]**

#### **Product data:**

Product Type:	Primary Antibodies
Clone Name:	OTI5E6
Applications:	WB
Recommended Dilution:	WB 1:500
Reactivity:	Human
Host:	Mouse
Isotype:	IgG2b
Clonality:	Monoclonal
Immunogen:	Human recombinant protein fragment corresponding to amino acids 29-146 of human PIP (NP_002643) produced in E.coli.
Formulation:	PBS (pH 7.3) containing 1% BSA, 50% glycerol and 0.02% sodium azide.
Concentration:	1 mg/ml
Purification:	Purified from mouse ascites fluids or tissue culture supernatant by affinity chromatography (protein A/G)
Conjugation:	Unconjugated
Storage:	Store at -20°C as received.
Stability:	Stable for 12 months from date of receipt.
Predicted Protein Size:	16.4 kDa
Gene Name:	prolactin induced protein
Database Link:	<a href="#">NP_002643</a> <a href="#">Entrez Gene 5304 Human P12273</a>
Synonyms:	GCDFP-15; GCDFP15; GPIP4
Protein Families:	Secreted Protein



[View online »](#)

**Product images:**

HEK293T cells were transfected with the pCMV6-ENTRY control (Cat# [PS100001], Left lane) or pCMV6-ENTRY PIP (Cat# [RC203135], Right lane) cDNA for 48 hrs and lysed. Equivalent amounts of cell lysates (5 ug per lane) were separated by SDS-PAGE and immunoblotted with anti-PIP. (1:5(Cat# TA801704). Positive lysates [LY419186] (100ug) and [LC419186] (20ug) can be purchased separately from OriGene.