

Product datasheet for **TA801621S**

Galectin 3 (LGALS3) Mouse Monoclonal Antibody [Clone ID: OTI1C7]

Product data:

Product Type:	Primary Antibodies
Clone Name:	OTI1C7
Applications:	IHC, WB
Recommended Dilution:	WB 1:2000, IHC 1:150
Reactivity:	Human, Mouse
Host:	Mouse
Isotype:	IgG
Clonality:	Monoclonal
Immunogen:	Full length human recombinant protein of human LGALS3 (NP_002297) produced in E.coli.
Formulation:	PBS (pH 7.3) containing 1% BSA, 50% glycerol and 0.02% sodium azide.
Concentration:	1 mg/ml
Purification:	Purified from mouse ascites fluids or tissue culture supernatant by affinity chromatography (protein A/G)
Conjugation:	Unconjugated
Storage:	Store at -20°C as received.
Stability:	Stable for 12 months from date of receipt.
Gene Name:	lectin, galactoside binding soluble 3
Database Link:	NP_002297 Entrez Gene 16854 Mouse Entrez Gene 3958 Human P17931

Background: This gene encodes a member of the galectin family of carbohydrate binding proteins. Members of this protein family have an affinity for beta-galactosides. The encoded protein is characterized by an N-terminal proline-rich tandem repeat domain and a single C-terminal carbohydrate recognition domain. This protein can self-associate through the N-terminal domain allowing it to bind to multivalent saccharide ligands. This protein localizes to the extracellular matrix, the cytoplasm and the nucleus. This protein plays a role in numerous cellular functions including apoptosis, innate immunity, cell adhesion and T-cell regulation. Alternate splicing results in multiple transcript variants. [provided by RefSeq, Apr 2010]

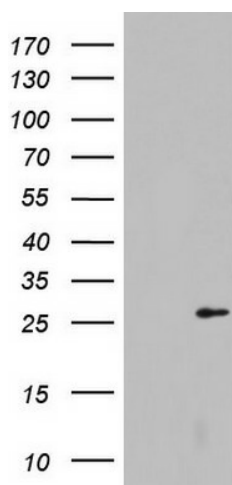


[View online »](#)

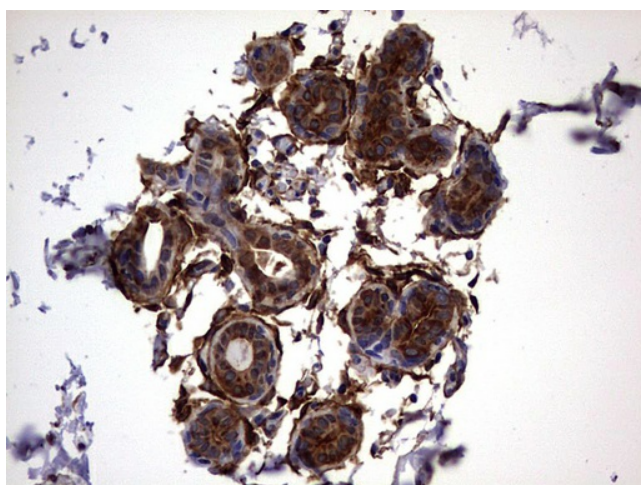
Synonyms: CBP35; GAL3; GALBP; GALIG; L31; LGALS2; MAC2

Protein Families: Secreted Protein

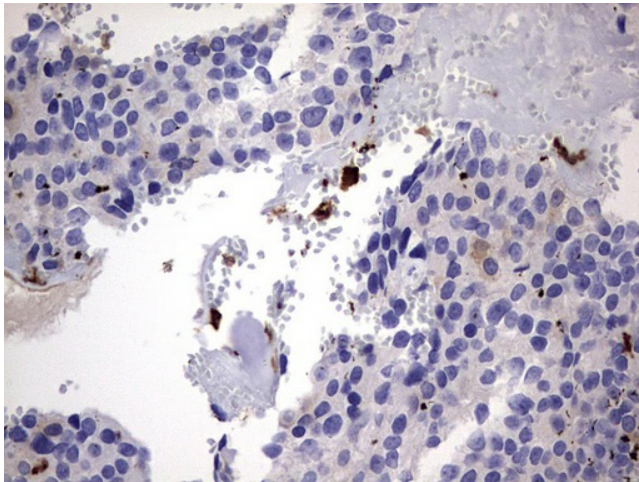
Product images:



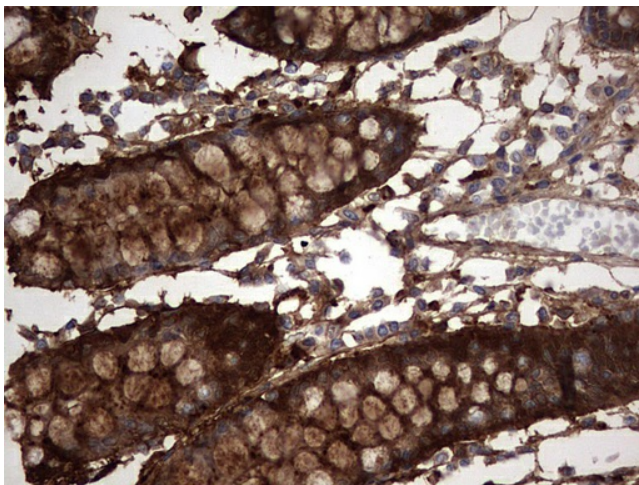
HEK293T cells were transfected with the pCMV6-ENTRY control (Cat# [PS100001], Left lane) or pCMV6-ENTRY LGALS3 (Cat# [RC208785], Right lane) cDNA for 48 hrs and lysed. Equivalent amounts of cell lysates (5 ug per lane) were separated by SDS-PAGE and immunoblotted with anti-LGALS3 (Cat# [TA801621]). Positive lysates [LY400834] (100ug) and [LC400834] (20ug) can be purchased separately from OriGene.



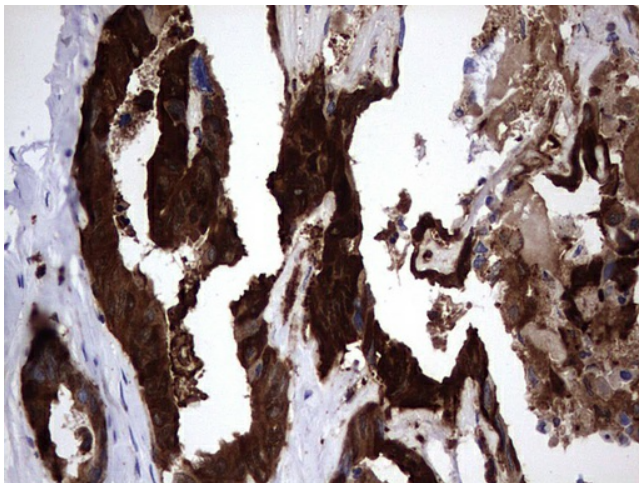
Immunohistochemical staining of paraffin-embedded Human breast tissue within the normal limits using anti-LGALS3 mouse monoclonal antibody. (Heat-induced epitope retrieval by 1mM EDTA in 10mM Tris, pH8.5, 120°C for 3min, [TA801621])



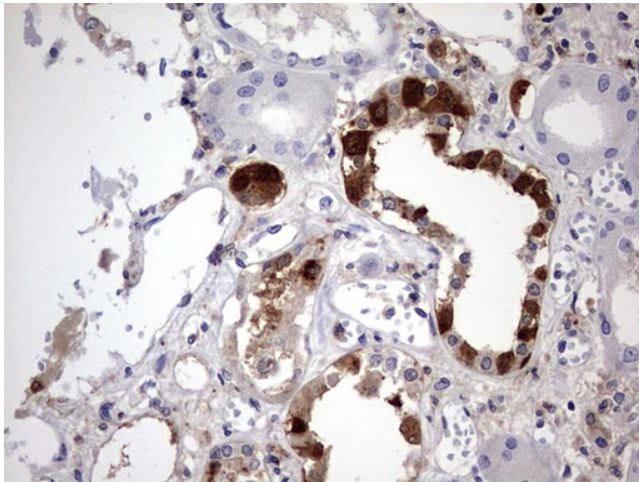
Immunohistochemical staining of paraffin-embedded Adenocarcinoma of Human breast tissue using anti-LGALS3 mouse monoclonal antibody. (Heat-induced epitope retrieval by 1mM EDTA in 10mM Tris, pH8.5, 120°C for 3min, [TA801621])



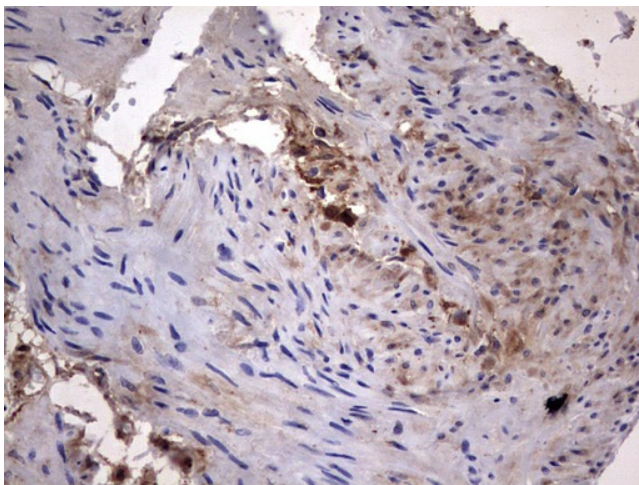
Immunohistochemical staining of paraffin-embedded Human colon tissue within the normal limits using anti-LGALS3 mouse monoclonal antibody. (Heat-induced epitope retrieval by 1mM EDTA in 10mM Tris, pH8.5, 120°C for 3min, [TA801621])



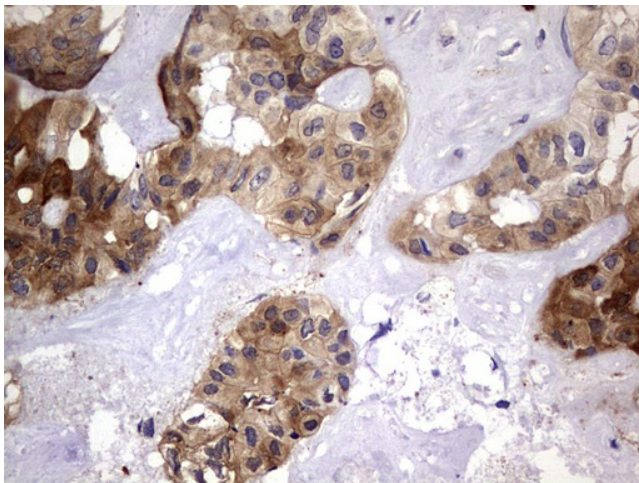
Immunohistochemical staining of paraffin-embedded Adenocarcinoma of Human colon tissue using anti-LGALS3 mouse monoclonal antibody. (Heat-induced epitope retrieval by 1mM EDTA in 10mM Tris, pH8.5, 120°C for 3min, [TA801621])



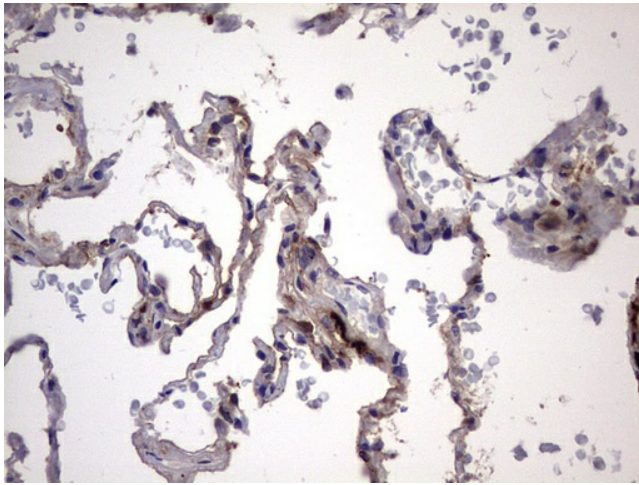
Immunohistochemical staining of paraffin-embedded Human Kidney tissue within the normal limits using anti-LGALS3 mouse monoclonal antibody. (Heat-induced epitope retrieval by 1mM EDTA in 10mM Tris, pH8.5, 120°C for 3min, [TA801621])



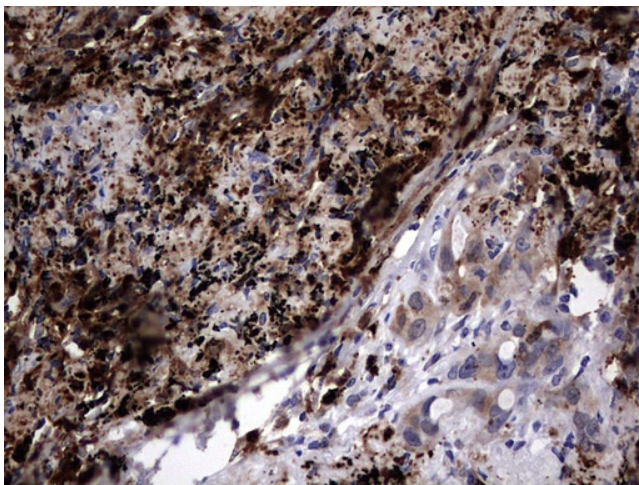
Immunohistochemical staining of paraffin-embedded Carcinoma of Human kidney tissue using anti-LGALS3 mouse monoclonal antibody. (Heat-induced epitope retrieval by 1mM EDTA in 10mM Tris, pH8.5, 120°C for 3min, [TA801621])



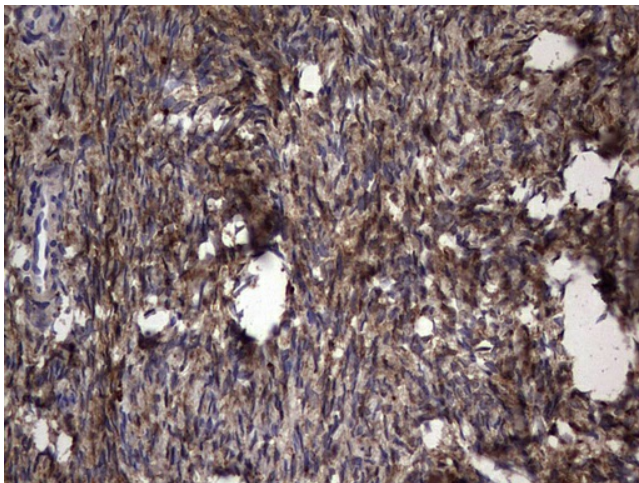
Immunohistochemical staining of paraffin-embedded Carcinoma of Human liver tissue using anti-LGALS3 mouse monoclonal antibody. (Heat-induced epitope retrieval by 1mM EDTA in 10mM Tris, pH8.5, 120°C for 3min, [TA801621])



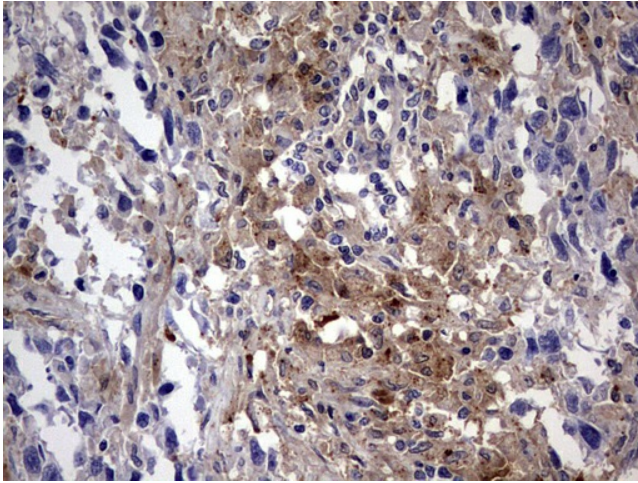
Immunohistochemical staining of paraffin-embedded Human lung tissue within the normal limits using anti-LGALS3 mouse monoclonal antibody. (Heat-induced epitope retrieval by 1mM EDTA in 10mM Tris, pH8.5, 120°C for 3min, [TA801621])



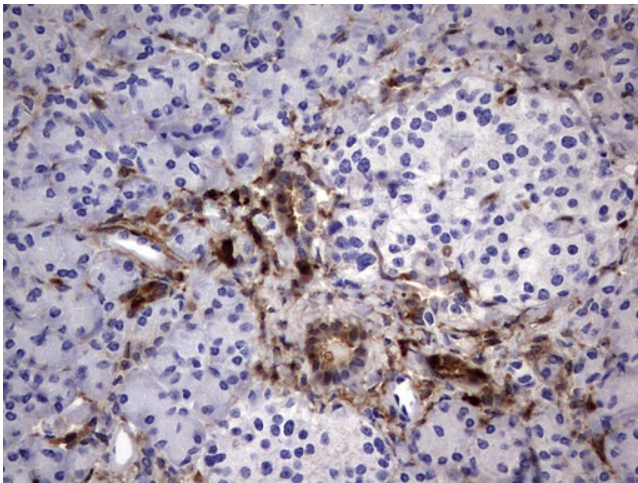
Immunohistochemical staining of paraffin-embedded Carcinoma of Human lung tissue using anti-LGALS3 mouse monoclonal antibody. (Heat-induced epitope retrieval by 1mM EDTA in 10mM Tris, pH8.5, 120°C for 3min, [TA801621])



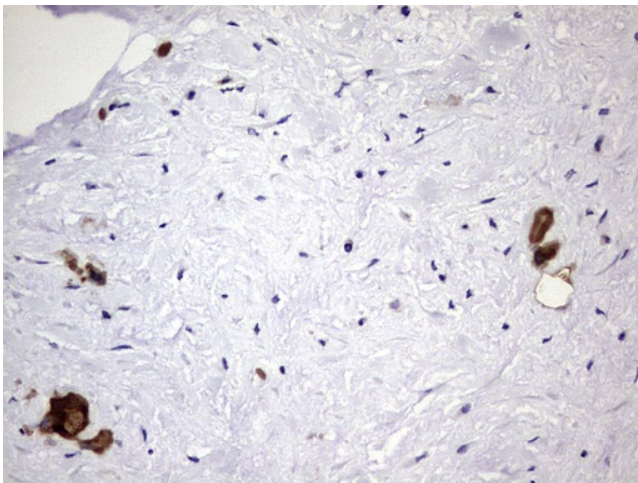
Immunohistochemical staining of paraffin-embedded Human Ovary tissue within the normal limits using anti-LGALS3 mouse monoclonal antibody. (Heat-induced epitope retrieval by 1mM EDTA in 10mM Tris, pH8.5, 120°C for 3min, [TA801621])



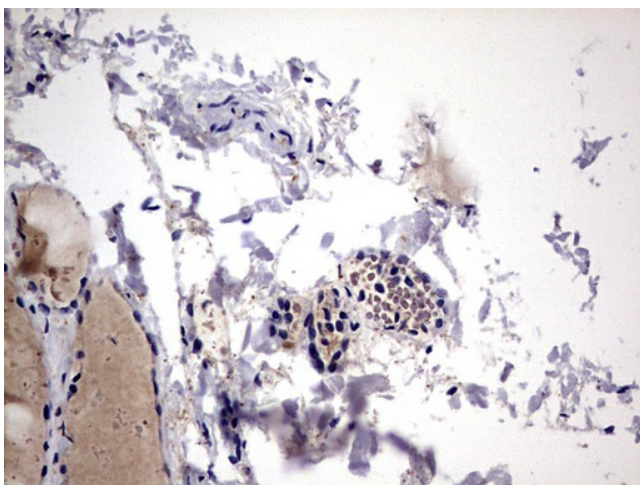
Immunohistochemical staining of paraffin-embedded Adenocarcinoma of Human ovary tissue using anti-LGALS3 mouse monoclonal antibody. (Heat-induced epitope retrieval by 1mM EDTA in 10mM Tris, pH8.5, 120°C for 3min, [TA801621])



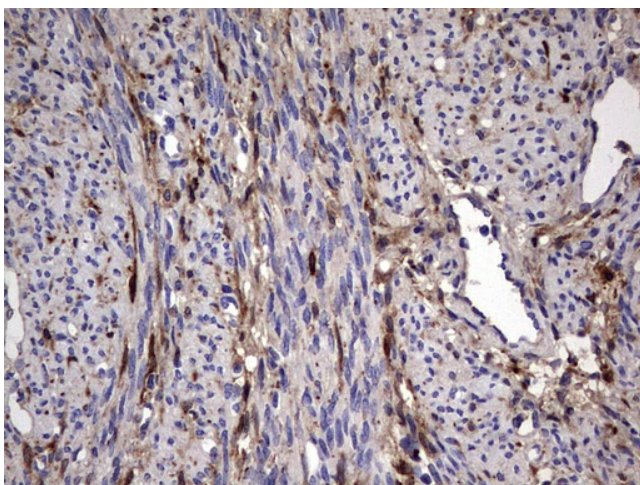
Immunohistochemical staining of paraffin-embedded Human pancreas tissue within the normal limits using anti-LGALS3 mouse monoclonal antibody. (Heat-induced epitope retrieval by 1mM EDTA in 10mM Tris, pH8.5, 120°C for 3min, [TA801621])



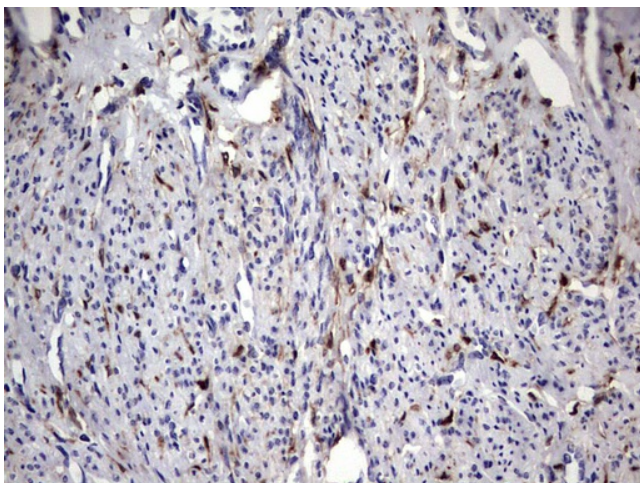
Immunohistochemical staining of paraffin-embedded Carcinoma of Human pancreas tissue using anti-LGALS3 mouse monoclonal antibody. (Heat-induced epitope retrieval by 1mM EDTA in 10mM Tris, pH8.5, 120°C for 3min, [TA801621])



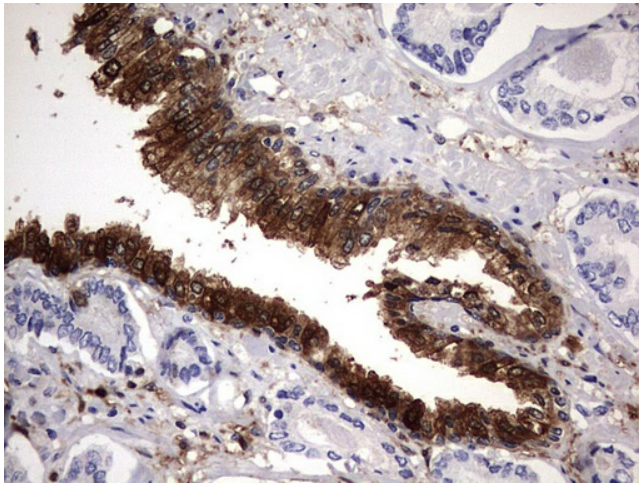
Immunohistochemical staining of paraffin-embedded Human thyroid tissue within the normal limits using anti-LGALS3 mouse monoclonal antibody. (Heat-induced epitope retrieval by 1mM EDTA in 10mM Tris, pH8.5, 120°C for 3min, [TA801621])



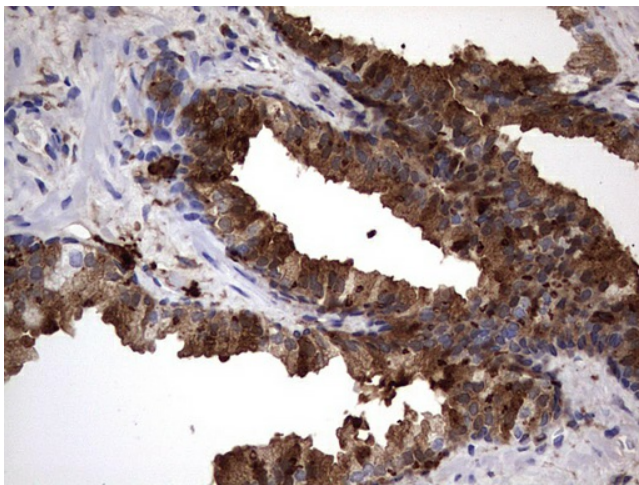
Immunohistochemical staining of paraffin-embedded Human endometrium tissue within the normal limits using anti-LGALS3 mouse monoclonal antibody. (Heat-induced epitope retrieval by 1mM EDTA in 10mM Tris, pH8.5, 120°C for 3min, [TA801621])



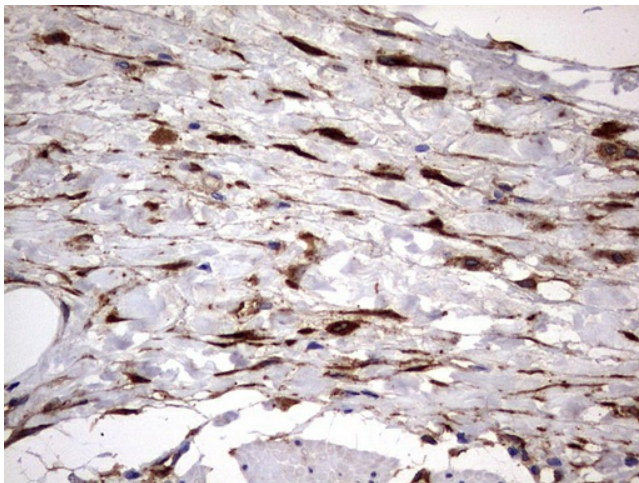
Immunohistochemical staining of paraffin-embedded Adenocarcinoma of Human endometrium tissue using anti-LGALS3 mouse monoclonal antibody. (Heat-induced epitope retrieval by 1mM EDTA in 10mM Tris, pH8.5, 120°C for 3min, [TA801621])



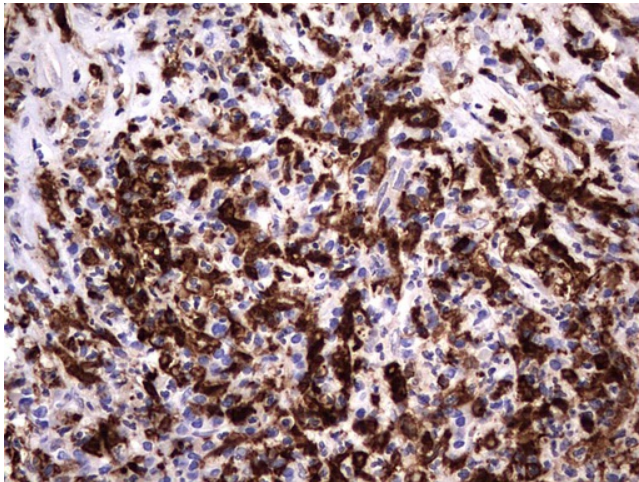
Immunohistochemical staining of paraffin-embedded Human prostate tissue within the normal limits using anti-LGALS3 mouse monoclonal antibody. (Heat-induced epitope retrieval by 1mM EDTA in 10mM Tris, pH8.5, 120°C for 3min, [TA801621])



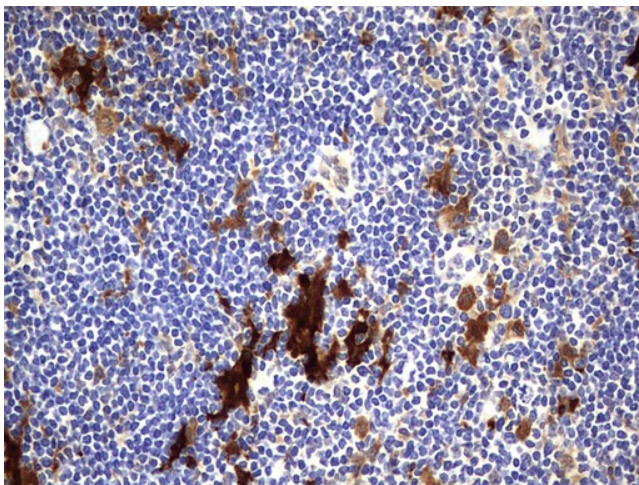
Immunohistochemical staining of paraffin-embedded Carcinoma of Human prostate tissue using anti-LGALS3 mouse monoclonal antibody. (Heat-induced epitope retrieval by 1mM EDTA in 10mM Tris, pH8.5, 120°C for 3min, [TA801621])



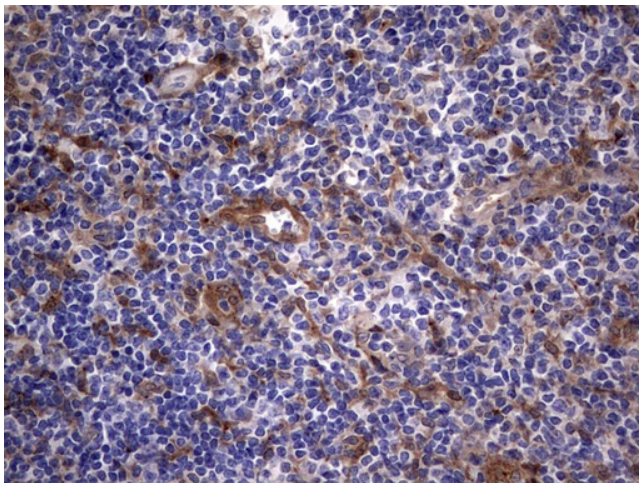
Immunohistochemical staining of paraffin-embedded Human bladder tissue within the normal limits using anti-LGALS3 mouse monoclonal antibody. (Heat-induced epitope retrieval by 1mM EDTA in 10mM Tris, pH8.5, 120°C for 3min, [TA801621])



Immunohistochemical staining of paraffin-embedded Human lymph node tissue within the normal limits using anti-LGALS3 mouse monoclonal antibody. (Heat-induced epitope retrieval by 1mM EDTA in 10mM Tris, pH8.5, 120°C for 3min, [TA801621])



Immunohistochemical staining of paraffin-embedded Human lymphoma tissue using anti-LGALS3 mouse monoclonal antibody. (Heat-induced epitope retrieval by 1mM EDTA in 10mM Tris, pH8.5, 120°C for 3min, [TA801621])



Immunohistochemical staining of paraffin-embedded Human tonsil within the normal limits using anti-LGALS3 mouse monoclonal antibody. (Heat-induced epitope retrieval by 1mM EDTA in 10mM Tris, pH8.5, 120°C for 3min, [TA801621])