

## Product datasheet for **TA801362BM**

### Tyrosinase (TYR) Mouse Monoclonal Antibody (HRP conjugated) [Clone ID: OTI1F3]

#### Product data:

Product Type:	Primary Antibodies
Clone Name:	OTI1F3
Applications:	IHC, WB
Recommended Dilution:	WB 1:2000, IHC 1:150
Reactivity:	Human, Mouse, Rat
Host:	Mouse
Isotype:	IgG1
Clonality:	Monoclonal
Immunogen:	Human recombinant protein fragment corresponding to amino acids 19-320 of human TYR (NP_000363) produced in E.coli.
Formulation:	PBS (pH 7.3) containing 1% BSA, 50% glycerol.
Concentration:	0.5 mg/ml
Purification:	Purified from mouse ascites fluids or tissue culture supernatant by affinity chromatography (protein A/G)
Conjugation:	HRP
Storage:	Store at -20°C as received.
Stability:	Stable for 12 months from date of receipt.
Predicted Protein Size:	58.3 kDa
Gene Name:	tyrosinase
Database Link:	<a href="#">NP_000363</a> <a href="#">Entrez Gene 22173 Mouse</a> <a href="#">Entrez Gene 308800 Rat</a> <a href="#">Entrez Gene 7299 Human</a> <a href="#">P14679</a>
Background:	The enzyme encoded by this gene catalyzes the first 2 steps, and at least 1 subsequent step, in the conversion of tyrosine to melanin. The enzyme has both tyrosine hydroxylase and dopa oxidase catalytic activities, and requires copper for function. Mutations in this gene result in oculocutaneous albinism, and nonpathologic polymorphisms result in skin pigmentation variation. The human genome contains a pseudogene similar to the 3' half of this gene. [provided by RefSeq, Oct 2008]



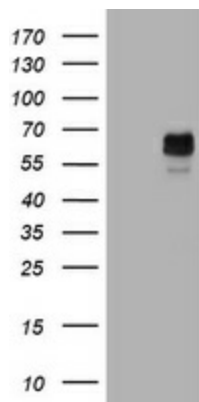
[View online »](#)

**Synonyms:** ATN; CMM8; OCA1; OCA1A; OCAIA; SHEP3

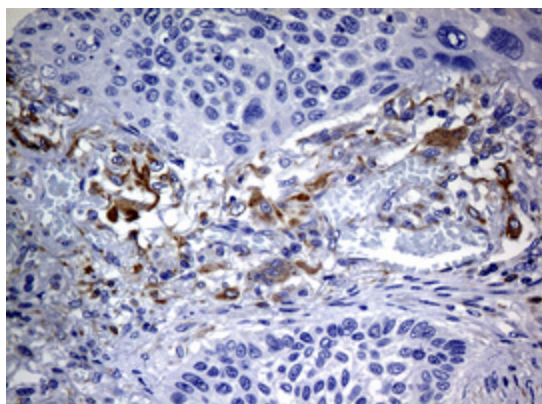
**Protein Families:** Transmembrane

**Protein Pathways:** Melanogenesis, Metabolic pathways, Riboflavin metabolism, Tyrosine metabolism

### Product images:



HEK293T cells were transfected with the pCMV6-ENTRY control (Cat# [PS100001], Left lane) or pCMV6-ENTRY TYR (Cat# [RC221797], Right lane) cDNA for 48 hrs and lysed. Equivalent amounts of cell lysates (5 ug per lane) were separated by SDS-PAGE and immunoblotted with anti-TYR antibody (Cat# [TA801362]). Positive lysates [LY424756] (100ug) and [LC424756] (20ug) can be purchased separately from OriGene.



Immunohistochemical staining of paraffin-embedded Carcinoma of Human lung tissue using anti-TYR mouse monoclonal antibody. (Heat-induced epitope retrieval by 10mM citric buffer, pH6.0, 120°C for 3min, [TA801362])