

## Product datasheet for **TA800533BM**

### CD20 (MS4A1) Mouse Monoclonal Antibody (HRP conjugated) [Clone ID: OTI11F7]

#### Product data:

|                         |                                                                                                           |
|-------------------------|-----------------------------------------------------------------------------------------------------------|
| Product Type:           | Primary Antibodies                                                                                        |
| Clone Name:             | OTI11F7                                                                                                   |
| Applications:           | IHC, WB                                                                                                   |
| Recommended Dilution:   | WB 1:2000                                                                                                 |
| Reactivity:             | Human                                                                                                     |
| Host:                   | Mouse                                                                                                     |
| Isotype:                | IgG1                                                                                                      |
| Clonality:              | Monoclonal                                                                                                |
| Immunogen:              | Full length human recombinant protein of human MS4A1 (NP_068769) produced in HEK293T cell.                |
| Formulation:            | PBS (pH 7.3) containing 1% BSA, 50% glycerol.                                                             |
| Concentration:          | 0.5 mg/ml                                                                                                 |
| Purification:           | Purified from mouse ascites fluids or tissue culture supernatant by affinity chromatography (protein A/G) |
| Conjugation:            | HRP                                                                                                       |
| Storage:                | Store at -20°C as received.                                                                               |
| Stability:              | Stable for 12 months from date of receipt.                                                                |
| Predicted Protein Size: | 32.9 kDa                                                                                                  |
| Gene Name:              | membrane spanning 4-domains A1                                                                            |
| Database Link:          | <a href="#">NP_068769</a><br><a href="#">Entrez Gene 931 Human</a><br><a href="#">P11836</a>              |



[View online »](#)

**Background:**

This gene encodes a member of the membrane-spanning 4A gene family. Members of this nascent protein family are characterized by common structural features and similar intron/exon splice boundaries and display unique expression patterns among hematopoietic cells and nonlymphoid tissues. This gene encodes a B-lymphocyte surface molecule which plays a role in the development and differentiation of B-cells into plasma cells. This family member is localized to 11q12, among a cluster of family members. Alternative splicing of this gene results in two transcript variants which encode the same protein. [provided by RefSeq]

**Synonyms:**

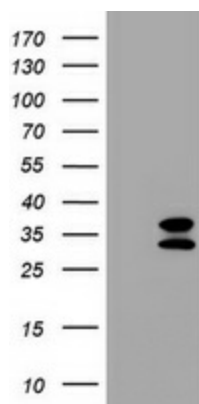
B1; Bp35; CD20; CVID5; FMC7; LEU-16; MS4A2; S7

**Protein Families:**

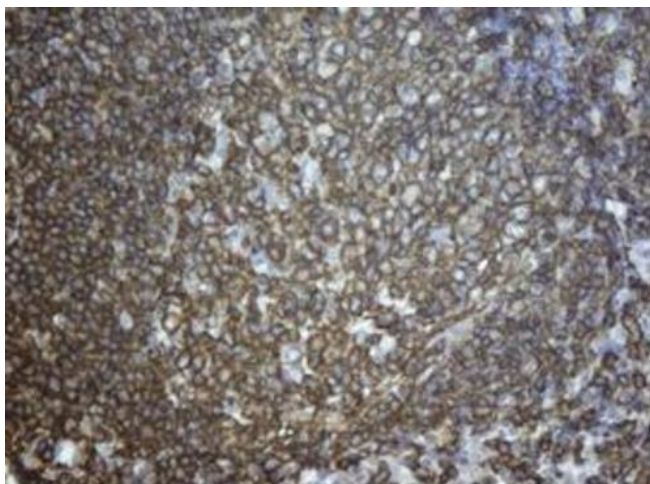
Druggable Genome, Transmembrane

**Protein Pathways:**

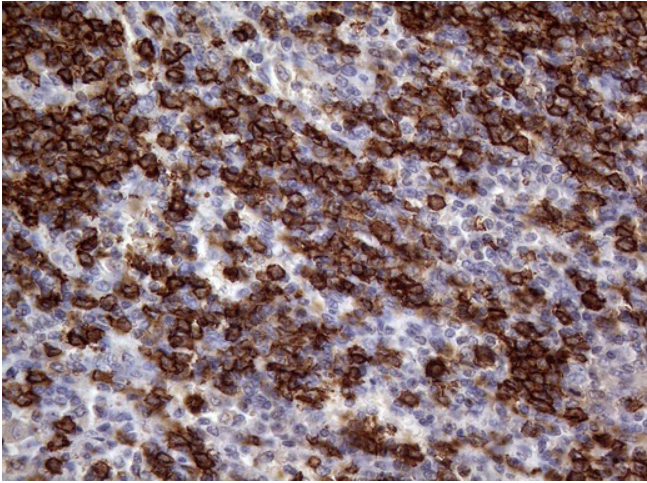
Hematopoietic cell lineage

**Product images:**

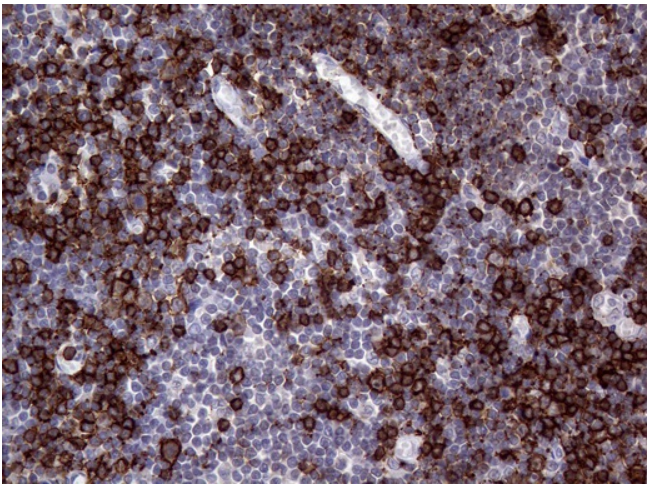
HEK293T cells were transfected with the pCMV6-ENTRY control (Left lane) or pCMV6-ENTRY MS4A1 [RC201242], Right lane) cDNA for 48 hrs and lysed. Equivalent amounts of cell lysates (5 ug per lane) were separated by SDS-PAGE and immunoblotted with anti-MS4A1. Positive lysates [LY402889] (100ug) and [LC402889] (20ug) can be purchased separately from OriGene.



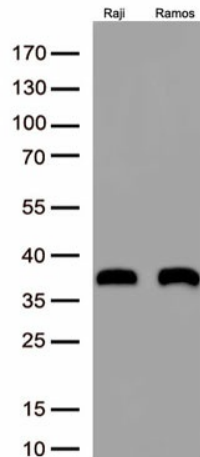
Immunohistochemical staining of paraffin-embedded lymph node tissue within the normal limits using anti-MS4A1 mouse monoclonal antibody. (Heat-induced epitope retrieval by 10mM citric buffer, pH6.0, 120°C for 3min, [TA800533], Dilution 1:100)



Immunohistochemical staining of paraffin-embedded Human lymphoma tissue using anti-MS4A1 mouse monoclonal antibody. ([TA800533]) (1:500)



Immunohistochemical staining of paraffin-embedded Human tonsil within the normal limits using anti-MS4A1 mouse monoclonal antibody. (Heat-induced epitope retrieval by 1mM EDTA in 10mM Tris buffer (pH8.0) at 120°C for 3min, [TA800533]) (1:500)



Western blot analysis of extracts (50ug per lane) from 2 cell lines lysates by using anti-MS4A1 monoclonal antibody([TA800533], 1:500)