

## Product datasheet for **TA800427**

### Isocitrate dehydrogenase (IDH1) Mouse Monoclonal Antibody [Clone ID: OTI1D1]

#### Product data:

Product Type:	Primary Antibodies
Clone Name:	OTI1D1
Applications:	IHC, WB
Recommended Dilution:	WB 1:500, IHC 1:150
Reactivity:	Human, Dog, Rat, Monkey, Mouse
Host:	Mouse
Isotype:	IgG1
Clonality:	Monoclonal
Immunogen:	Synthetic peptide around the R132 region of the human IDH conjugated to KLH
Formulation:	PBS (pH 7.3) containing 1% BSA, 50% glycerol and 0.02% sodium azide.
Concentration:	1 mg/ml
Purification:	Purified from mouse ascites fluids or tissue culture supernatant by affinity chromatography (protein A/G)
Conjugation:	Unconjugated
Storage:	Store at -20°C as received.
Stability:	Stable for 12 months from date of receipt.
Predicted Protein Size:	46.5 kDa
Gene Name:	isocitrate dehydrogenase (NADP(+)) 1, cytosolic
Database Link:	<a href="#">NP_005887</a> <a href="#">Entrez Gene 15926 Mouse</a> <a href="#">Entrez Gene 24479 Rat</a> <a href="#">Entrez Gene 478889 Dog</a> <a href="#">Entrez Gene 710019 Monkey</a> <a href="#">Entrez Gene 3417 Human</a> <a href="#">O75874</a>



[View online »](#)

**Background:**

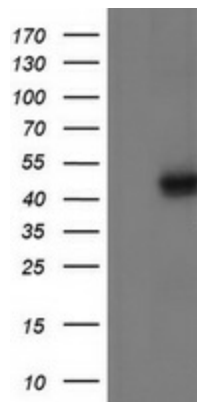
Isocitrate dehydrogenases catalyze the oxidative decarboxylation of isocitrate to 2-oxoglutarate. These enzymes belong to two distinct subclasses, one of which utilizes NAD(+) as the electron acceptor and the other NADP(+). Five isocitrate dehydrogenases have been reported: three NAD(+)-dependent isocitrate dehydrogenases, which localize to the mitochondrial matrix, and two NADP(+)-dependent isocitrate dehydrogenases, one of which is mitochondrial and the other predominantly cytosolic. Each NADP(+)-dependent isozyme is a homodimer. The protein encoded by this gene is the NADP(+)-dependent isocitrate dehydrogenase found in the cytoplasm and peroxisomes. It contains the PTS-1 peroxisomal targeting signal sequence. The presence of this enzyme in peroxisomes suggests roles in the regeneration of NADPH for intraperoxisomal reductions, such as the conversion of 2, 4-dienoyl-CoAs to 3-enoyl-CoAs, as well as in peroxisomal reactions that consume 2-oxoglutarate, namely the alpha-hydroxylation of phytanic acid. The cytoplasmic enzyme serves a significant role in cytoplasmic NADPH production. [provided by RefSeq, Jul 2008]

**Synonyms:**

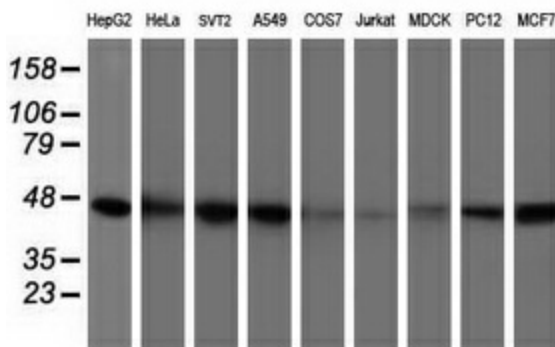
HEL-216; HEL-S-26; IDCD; IDH; IDP; IDPC; PICD

**Protein Pathways:**

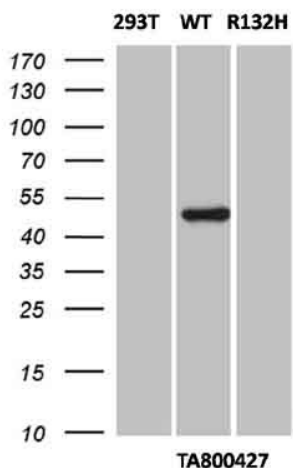
Citrate cycle (TCA cycle), Glutathione metabolism, Metabolic pathways

**Product images:**


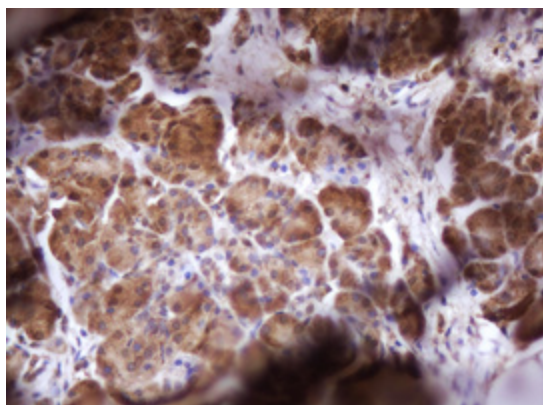
HEK293T cells were transfected with the pCMV6-ENTRY control (Left lane) or pCMV6-ENTRY IDH1 ([RC210582], Right lane) cDNA for 48 hrs and lysed. Equivalent amounts of cell lysates (5 ug per lane) were separated by SDS-PAGE and immunoblotted with anti-IDH1. Positive lysates [LY401782] (100ug) and [LC401782] (20ug) can be purchased separately from OriGene.



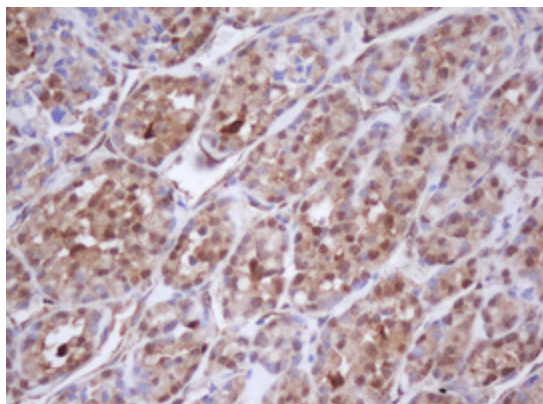
Western blot analysis of extracts (35ug) from 9 different cell lines by using anti-IDH1 monoclonal antibody (HepG2: human; HeLa: human; SVT2: mouse; A549: human; COS7: monkey; Jurkat: human; MDCK: canine; PC12: rat; MCF7: human).



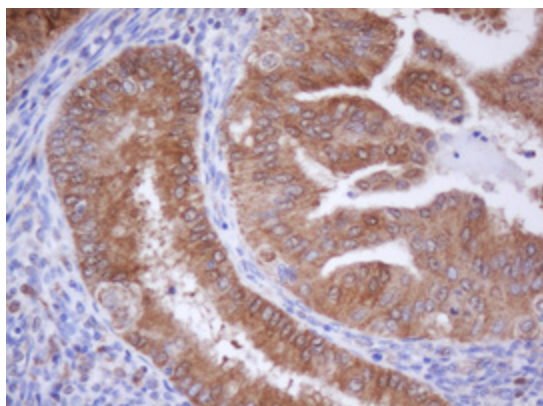
HEK293T cells were either not transfected (left lane "293T") or transfected with pCMV6-ENTRY IDH1 (wild type-SKU# [RC210582], middle lane "WT") or pCMV6-ENTRY IDH1 mutated (R132H mutation-SKU# [RC400096], right lane "R132H") cDNA for 48 hrs and lysed. Equivalent amounts of cell lysates (10 ug per lane) were separated by SDS-PAGE and immunoblotted with TA800427 (1:500) and then goat anti-mouse IgG-HRP (1:2000).



Immunohistochemical staining of paraffin-embedded Human pancreas tissue within the normal limits using anti-IDH1 mouse monoclonal antibody. (Heat-induced epitope retrieval by 10mM citric buffer, pH6.0, 100°C for 10min, TA800427)



Immunohistochemical staining of paraffin-embedded Carcinoma of Human thyroid tissue using anti-IDH1 mouse monoclonal antibody. (Heat-induced epitope retrieval by 10mM citric buffer, pH6.0, 100°C for 10min, TA800427)



Immunohistochemical staining of paraffin-embedded Human endometrium tissue within the normal limits using anti-IDH1 mouse monoclonal antibody. (Heat-induced epitope retrieval by 10mM citric buffer, pH6.0, 100°C for 10min, TA800427)