

## Product datasheet for **TA800318BM**

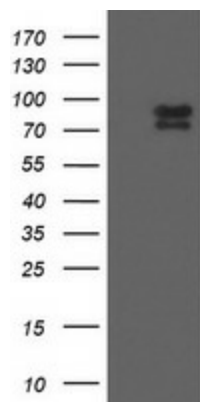
### **TLE 1 (TLE1) Mouse Monoclonal Antibody (HRP conjugated) [Clone ID: OTI2D8]**

#### **Product data:**

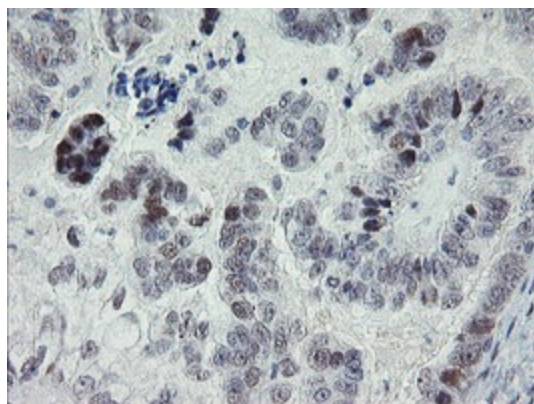
<b>Product Type:</b>	Primary Antibodies
<b>Clone Name:</b>	OTI2D8
<b>Applications:</b>	FC, IF, IHC, WB
<b>Recommended Dilution:</b>	WB 1:2000, IHC 1:150, IF 1:100, FLOW 1:100
<b>Reactivity:</b>	Human, Mouse, Rat
<b>Host:</b>	Mouse
<b>Isotype:</b>	IgG2a
<b>Clonality:</b>	Monoclonal
<b>Immunogen:</b>	Human recombinant protein fragment corresponding to amino acids 180-460 of human TLE1 (NP_005068) produced in E.coli.
<b>Formulation:</b>	PBS (pH 7.3) containing 1% BSA, 50% glycerol.
<b>Concentration:</b>	0.5 mg/ml
<b>Purification:</b>	Purified from mouse ascites fluids or tissue culture supernatant by affinity chromatography (protein A/G)
<b>Conjugation:</b>	HRP
<b>Storage:</b>	Store at -20°C as received.
<b>Stability:</b>	Stable for 12 months from date of receipt.
<b>Predicted Protein Size:</b>	83 kDa
<b>Gene Name:</b>	transducin like enhancer of split 1
<b>Database Link:</b>	<a href="#">NP_005068</a> <a href="#">Entrez Gene 21885 Mouse</a> <a href="#">Entrez Gene 362533 Rat</a> <a href="#">Entrez Gene 7088 Human</a> <a href="#">Q04724</a>
<b>Synonyms:</b>	ESG; ESG1; GRG1
<b>Protein Families:</b>	Transcription Factors



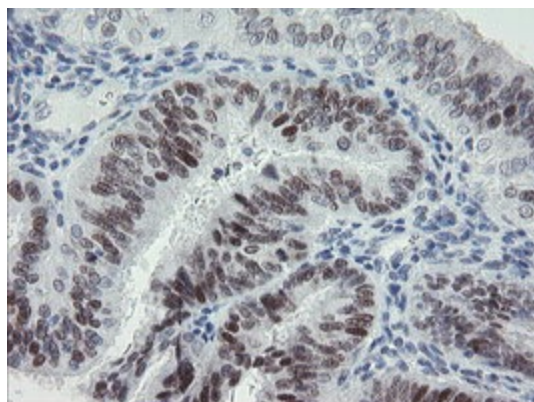
[View online »](#)

**Product images:**

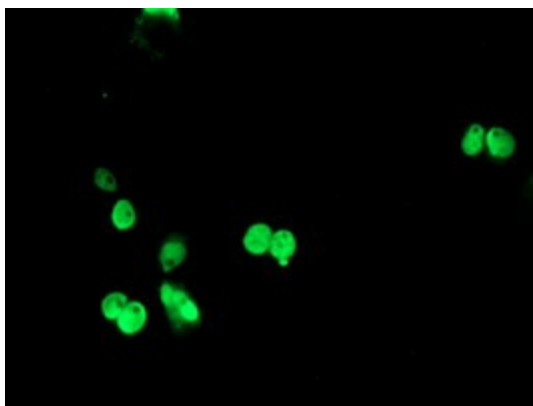
HEK293T cells were transfected with the pCMV6-ENTRY control (Left lane) or pCMV6-ENTRY TLE1 ([RC204037], Right lane) cDNA for 48 hrs and lysed. Equivalent amounts of cell lysates (5 ug per lane) were separated by SDS-PAGE and immunoblotted with anti-TLE1. Positive lysates [LY417561] (100ug) and [LC417561] (20ug) can be purchased separately from OriGene.



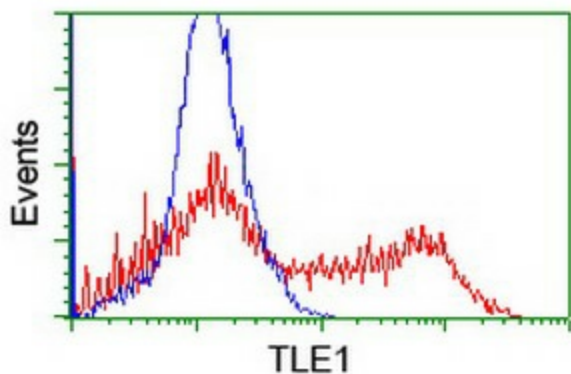
Immunohistochemical staining of paraffin-embedded Adenocarcinoma of Human ovary tissue using anti-TLE1 mouse monoclonal antibody. (Heat-induced epitope retrieval by 10mM citric buffer, pH6.0, 100°C for 10min, [TA800318])



Immunohistochemical staining of paraffin-embedded Adenocarcinoma of Human endometrium tissue using anti-TLE1 mouse monoclonal antibody. (Heat-induced epitope retrieval by 10mM citric buffer, pH6.0, 100°C for 10min, [TA800318])



Anti-TLE1 mouse monoclonal antibody ([TA800318]) immunofluorescent staining of COS7 cells transiently transfected by pCMV6-ENTRY TLE1 ([RC204037]).



HEK293T cells transfected with either [RC204037] overexpress plasmid (Red) or empty vector control plasmid (Blue) were immunostained by anti-TLE1 antibody ([TA800318]), and then analyzed by flow cytometry.