

Product datasheet for **TA800127BM**

SEN2 Mouse Monoclonal Antibody (HRP conjugated) [Clone ID: OTI3E7]

Product data:

| | |
|-----------------------|--|
| Product Type: | Primary Antibodies |
| Clone Name: | OTI3E7 |
| Applications: | FC, IF, IHC, WB |
| Recommended Dilution: | WB 1:500~2000, IHC 1:150, IF 1:100, FLOW 1:100 |
| Reactivity: | Human, Monkey, Mouse, Rat |
| Host: | Mouse |
| Isotype: | IgG1 |
| Clonality: | Monoclonal |
| Immunogen: | Human recombinant protein fragment corresponding to amino acids 139-523 of human SENP2 (NP_067640) produced in E.coli. |
| Formulation: | PBS (pH 7.3) containing 1% BSA, 50% glycerol. |
| Concentration: | 0.5 mg/ml |
| Purification: | Purified from mouse ascites fluids or tissue culture supernatant by affinity chromatography (protein A/G) |
| Conjugation: | HRP |
| Storage: | Store at -20°C as received. |
| Stability: | Stable for 12 months from date of receipt. |
| Gene Name: | SUMO1/sentrin/SMT3 specific peptidase 2 |
| Database Link: | NP_067640 Entrez Gene 75826 Mouse Entrez Gene 78973 Rat Entrez Gene 700717 Monkey Entrez Gene 59343 Human Q9HC62 |
| Background: | SUMO1 (UBL1; MIM 601912) is a small ubiquitin-like protein that can be covalently conjugated to other proteins. SENP2 is one of a group of enzymes that process newly synthesized SUMO1 into the conjugatable form and catalyze the deconjugation of SUMO1-containing species. [supplied by OMIM]. COMPLETENESS: complete on the 3' end. |
| Synonyms: | AXAM2; SMT3IP2 |

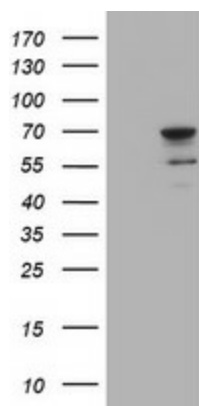


[View online »](#)

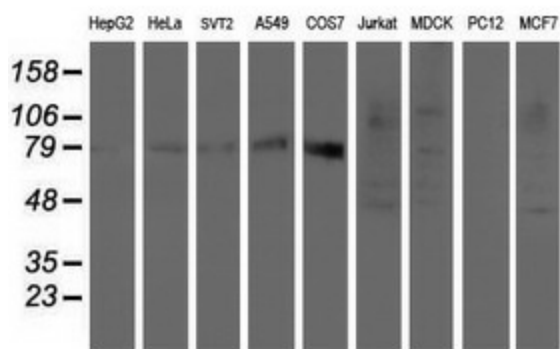
Protein Families: Druggable Genome, Protease

Protein Pathways: Wnt signaling pathway

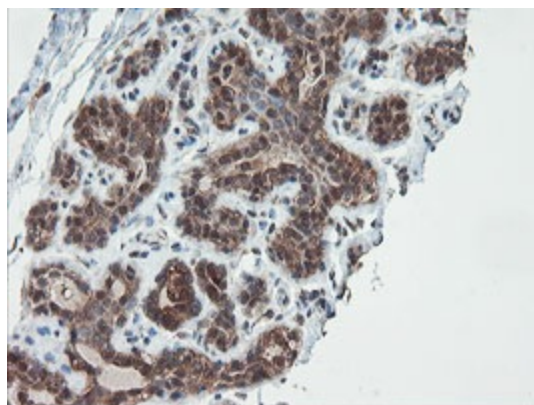
Product images:



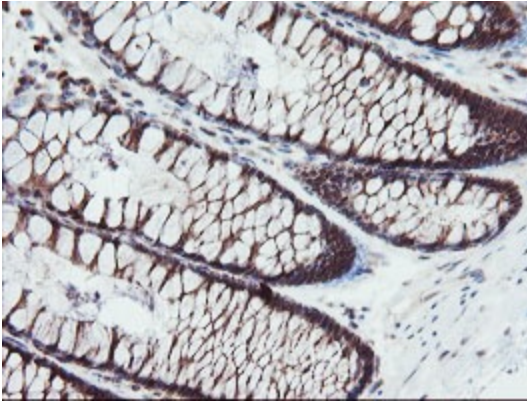
HEK293T cells were transfected with the pCMV6-ENTRY control (Left lane) or pCMV6-ENTRY SENP2 ([RC208109], Right lane) cDNA for 48 hrs and lysed. Equivalent amounts of cell lysates (5 ug per lane) were separated by SDS-PAGE and immunoblotted with anti-SENP2.



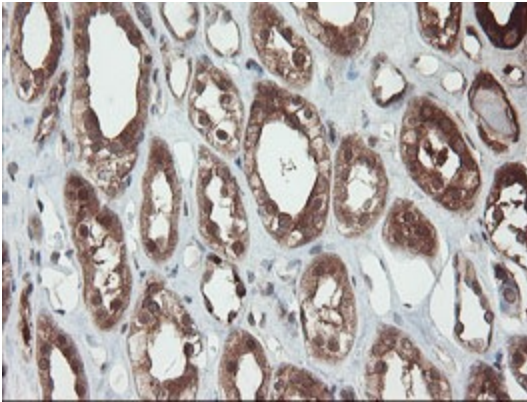
Western blot analysis of extracts (35ug) from 9 different cell lines by using anti-SENP2 monoclonal antibody (HepG2: human; HeLa: human; SVT2: mouse; A549: human; COS7: monkey; Jurkat: human; MDCK: canine; PC12: rat; MCF7: human).



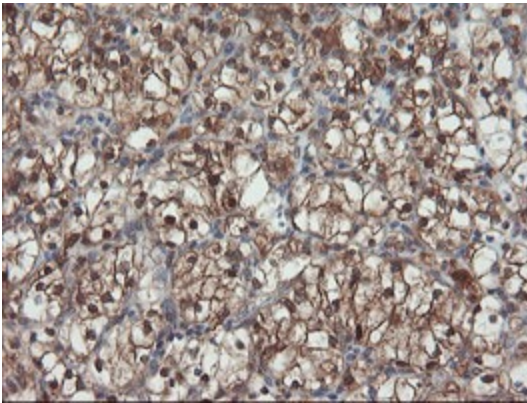
Immunohistochemical staining of paraffin-embedded Human breast tissue within the normal limits using anti-SENP2 mouse monoclonal antibody. (Heat-induced epitope retrieval by 10mM citric buffer, pH6.0, 100°C for 10min, [TA800127])



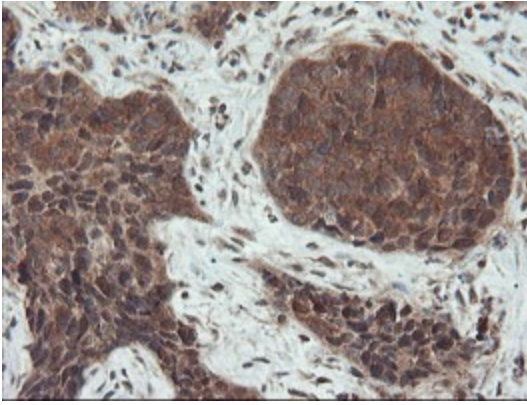
Immunohistochemical staining of paraffin-embedded Human colon tissue within the normal limits using anti-SENP2 mouse monoclonal antibody. (Heat-induced epitope retrieval by 10mM citric buffer, pH6.0, 100°C for 10min, [TA800127])



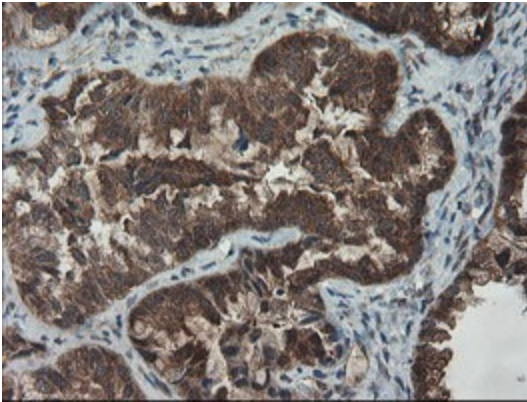
Immunohistochemical staining of paraffin-embedded Human Kidney tissue within the normal limits using anti-SENP2 mouse monoclonal antibody. (Heat-induced epitope retrieval by 10mM citric buffer, pH6.0, 100°C for 10min, [TA800127])



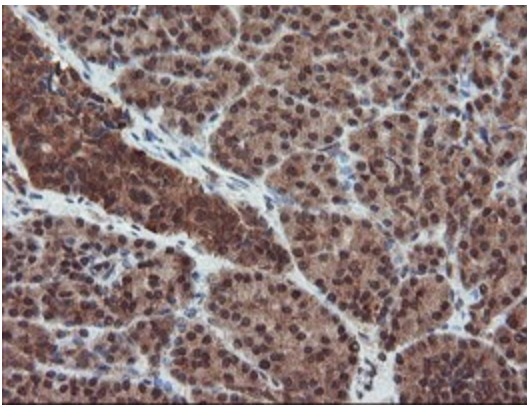
Immunohistochemical staining of paraffin-embedded Carcinoma of Human kidney tissue using anti-SENP2 mouse monoclonal antibody. (Heat-induced epitope retrieval by 10mM citric buffer, pH6.0, 100°C for 10min, [TA800127])



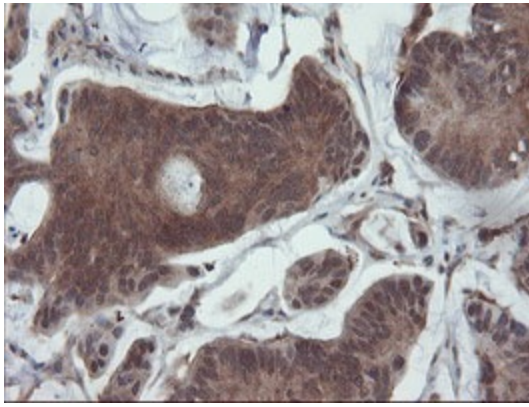
Immunohistochemical staining of paraffin-embedded Carcinoma of Human lung tissue using anti-SENP2 mouse monoclonal antibody. (Heat-induced epitope retrieval by 10mM citric buffer, pH6.0, 100°C for 10min, [TA800127])



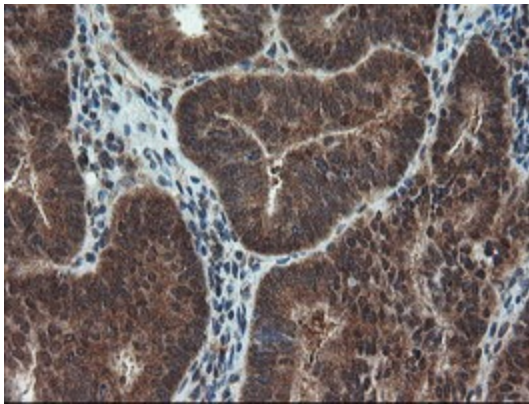
Immunohistochemical staining of paraffin-embedded Adenocarcinoma of Human ovary tissue using anti-SENP2 mouse monoclonal antibody. (Heat-induced epitope retrieval by 10mM citric buffer, pH6.0, 100°C for 10min, [TA800127])



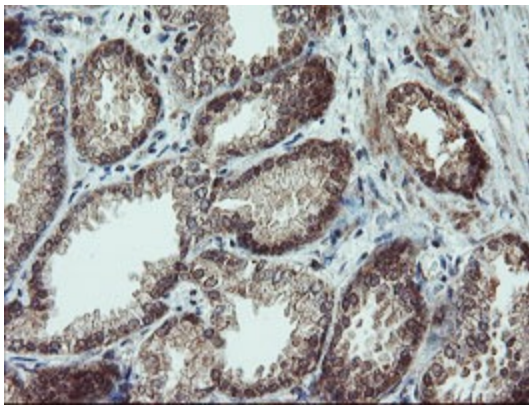
Immunohistochemical staining of paraffin-embedded Human pancreas tissue within the normal limits using anti-SENP2 mouse monoclonal antibody. (Heat-induced epitope retrieval by 10mM citric buffer, pH6.0, 100°C for 10min, [TA800127])



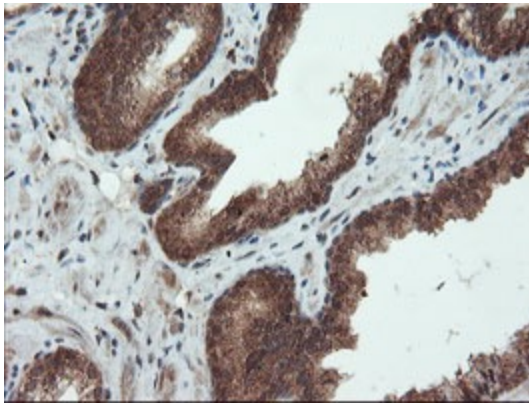
Immunohistochemical staining of paraffin-embedded Carcinoma of Human pancreas tissue using anti-SENP2 mouse monoclonal antibody. (Heat-induced epitope retrieval by 10mM citric buffer, pH6.0, 100°C for 10min, [TA800127])



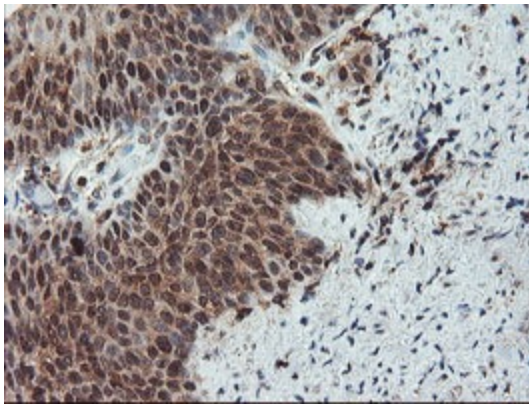
Immunohistochemical staining of paraffin-embedded Adenocarcinoma of Human endometrium tissue using anti-SENP2 mouse monoclonal antibody. (Heat-induced epitope retrieval by 10mM citric buffer, pH6.0, 100°C for 10min, [TA800127])



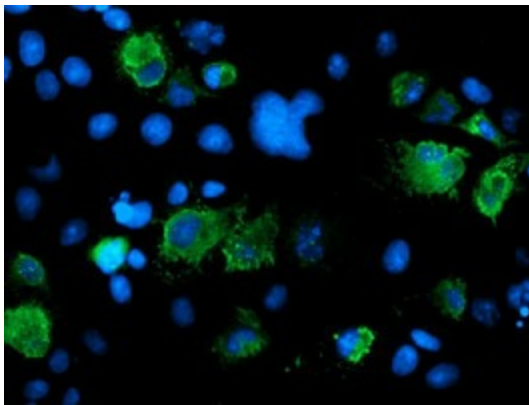
Immunohistochemical staining of paraffin-embedded Human prostate tissue within the normal limits using anti-SENP2 mouse monoclonal antibody. (Heat-induced epitope retrieval by 10mM citric buffer, pH6.0, 100°C for 10min, [TA800127])



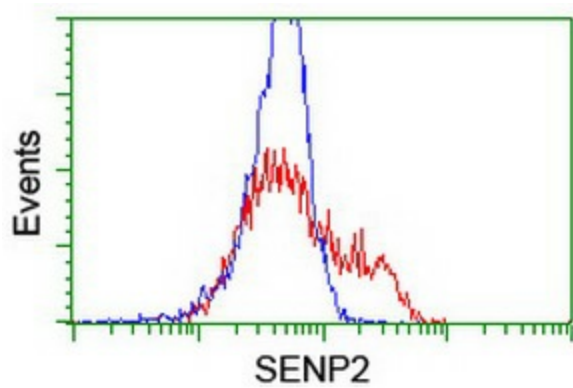
Immunohistochemical staining of paraffin-embedded Carcinoma of Human prostate tissue using anti-SENP2 mouse monoclonal antibody. (Heat-induced epitope retrieval by 10mM citric buffer, pH6.0, 100°C for 10min, [TA800127])



Immunohistochemical staining of paraffin-embedded Carcinoma of Human bladder tissue using anti-SENP2 mouse monoclonal antibody. (Heat-induced epitope retrieval by 10mM citric buffer, pH6.0, 100°C for 10min, [TA800127])



Anti-SENP2 mouse monoclonal antibody ([TA800127]) immunofluorescent staining of COS7 cells transiently transfected by pCMV6-ENTRY SENP2 ([RC208109]).



HEK293T cells transfected with either [RC208109] overexpress plasmid (Red) or empty vector control plasmid (Blue) were immunostained by anti-SEN2 antibody ([TA800127]), and then analyzed by flow cytometry.