

## Product datasheet for **TA700484**

### **HES1 Biotinylated Mouse Monoclonal Detection Antibody (Biotin conjugated) [Clone ID: OTI1B5]**

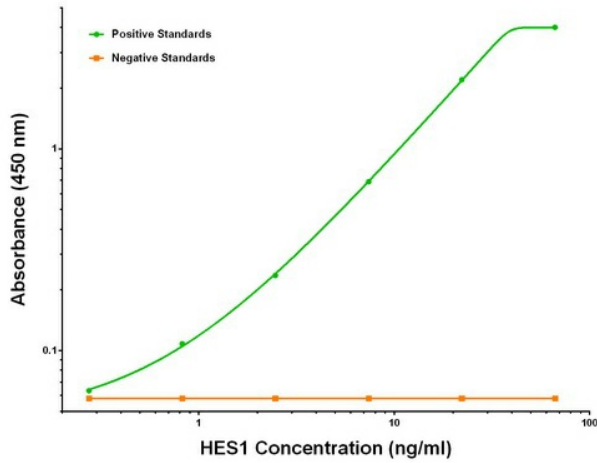
#### **Product data:**

<b>Product Type:</b>	Primary Antibodies
<b>Clone Name:</b>	OTI1B5
<b>Applications:</b>	ELISA, LMNX
<b>Recommended Dilution:</b>	1:250 - 1:1000
<b>Reactivity:</b>	Human, Mouse, Rat
<b>Host:</b>	Mouse
<b>Isotype:</b>	IgG1
<b>Clonality:</b>	Monoclonal
<b>Immunogen:</b>	Full length human recombinant protein of human HES1 (NM_005524) produced in HEK293T cell.
<b>Formulation:</b>	Stored in PBS (pH 7.4) with 0.05% sodium azide, 10mg/ml BSA, 50% glycerol
<b>Concentration:</b>	0.5 mg/ml
<b>Conjugation:</b>	Biotin
<b>Storage:</b>	Store at -20°C as received.
<b>Stability:</b>	Stable for 12 months from date of receipt.
<b>Gene Name:</b>	hes family bHLH transcription factor 1
<b>Database Link:</b>	<a href="#">NP_005515</a> <a href="#">Entrez Gene 15205 MouseEntrez Gene 29577 RatEntrez Gene 3280 Human Q14469</a>
<b>Synonyms:</b>	bHLHb39; HES-1; HHL; HRY
<b>Matched ELISA Pair:</b>	TA600483, TA600485
<b>Protein Families:</b>	Adult stem cells, Cancer stem cells, Druggable Genome, ES Cell Differentiation/IPS, Stem cell relevant signaling - DSL/Notch pathway, Transcription Factors
<b>Protein Pathways:</b>	Maturity onset diabetes of the young, Notch signaling pathway

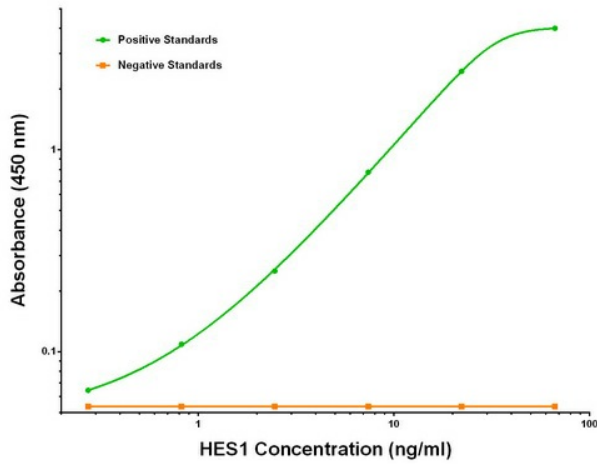


[View online »](#)

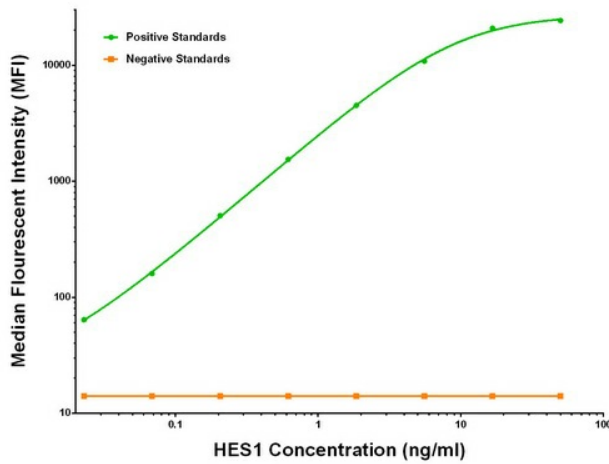
Product images:



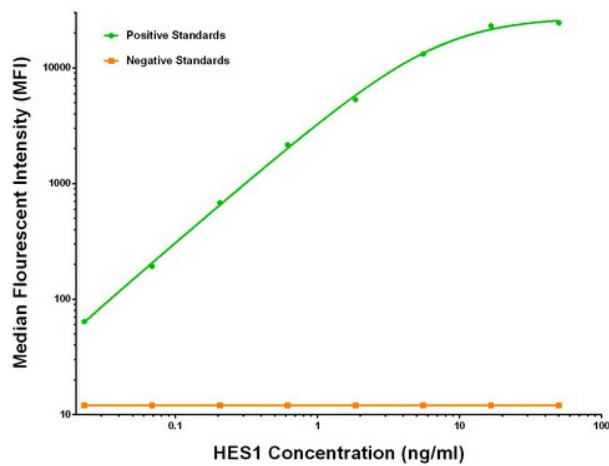
HES1 ELISA with 1F11 Capture ([TA600485]) and 1B5 Detection (TA700484) Antibodies. Substrate used: Recombinant Human HES1 ([TP311709])



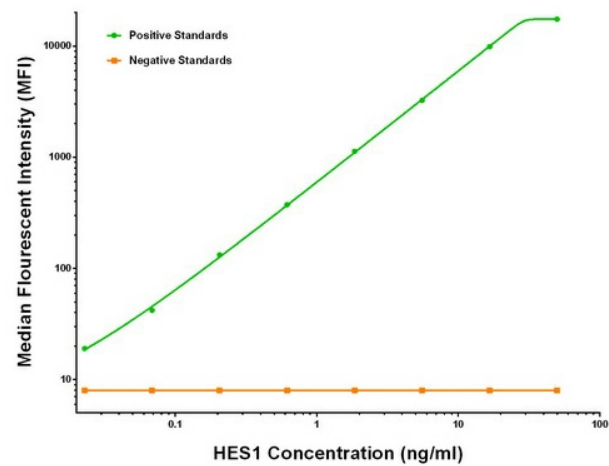
HES1 ELISA with 2D2 Capture ([TA600483]) and 1B5 Detection (TA700484) Antibodies. Substrate used: Recombinant Human HES1 ([TP311709])



HES1 Luminex ELISA with 1F11 Capture ([TA600485]) and 1B5 Detection (TA700484) Antibodies. Substrate used: Recombinant Human HES1 ([TP311709])



HES1 Luminex ELISA with 2D2 Capture ([TA600483]) and 1B5 Detection (TA700484) Antibodies. Substrate used: Recombinant Human HES1 ([TP311709])



HES1 Luminex ELISA with 7B9 Capture ([TA600484]) and 1B5 Detection (TA700484) Antibodies. Substrate used: Recombinant Human HES1 ([TP311709])