

## Product datasheet for **TA700440**

### **PADI4 Biotinylated Mouse Monoclonal Detection Antibody (Biotin conjugated) [Clone ID: OTI5C10]**

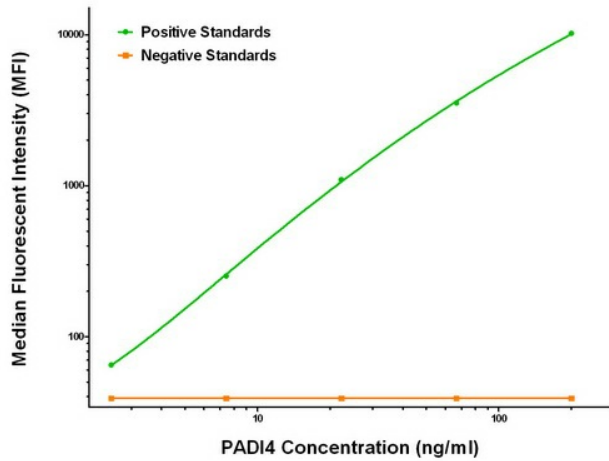
#### **Product data:**

Product Type:	Primary Antibodies
Clone Name:	OTI5C10
Applications:	LMNX
Recommended Dilution:	1:250 - 1:1000
Reactivity:	Human
Host:	Mouse
Isotype:	IgG1
Clonality:	Monoclonal
Immunogen:	Full length human recombinant protein of human PADI4 (NM_012387) produced in HEK293T cell.
Formulation:	Stored in PBS (pH 7.4) with 0.05% sodium azide, 10mg/ml BSA, 50% glycerol
Concentration:	0.5 mg/ml
Conjugation:	Biotin
Storage:	Store at -20°C as received.
Stability:	Stable for 12 months from date of receipt.
Gene Name:	peptidyl arginine deiminase 4
Database Link:	<a href="#">NP_036519</a> <a href="#">Entrez Gene 23569 Human Q9UM07</a>
Synonyms:	PAD; PAD4; PADI5; PDI4; PDI5
Matched ELISA Pair:	TA600440, TA600441

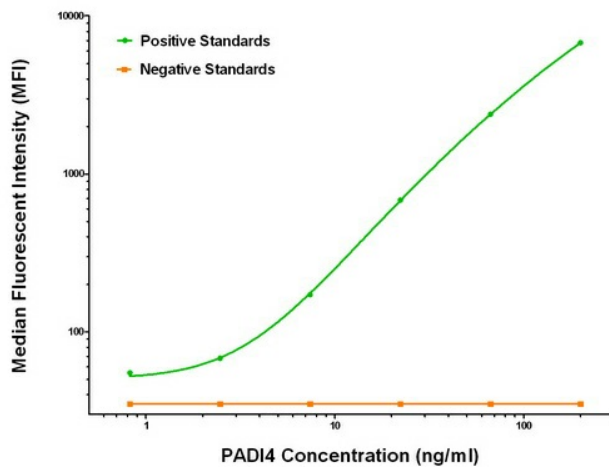


[View online »](#)

**Product images:**



PADI4 Luminex ELISA with 4H5 Capture ([TA600440]) and 5C10 Detection (TA700440) Antibodies. Substrate used: Recombinant Human PADI4 ([TP306501])



PADI4 Luminex ELISA with 5B7 Capture ([TA600441]) and 5C10 Detection (TA700440) Antibodies. Substrate used: Recombinant Human PADI4 ([TP306501])