

Product datasheet for **TA700399**

Haptoglobin (HP) Biotinylated Mouse Monoclonal Detection Antibody (Biotin conjugated) [Clone ID: OTI2B8]

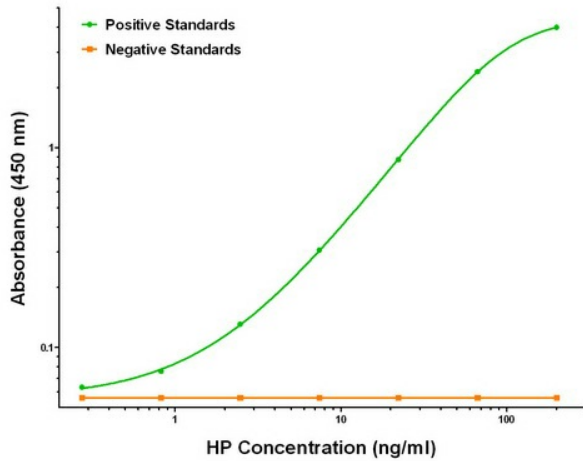
Product data:

Product Type:	Primary Antibodies
Clone Name:	OTI2B8
Applications:	ELISA
Recommended Dilution:	ELISA 1:250-1:1000
Reactivity:	Human
Host:	Mouse
Isotype:	IgG1
Clonality:	Monoclonal
Immunogen:	Full length human recombinant protein of human HP (NM_005143) produced in HEK293T cell.
Formulation:	Stored in PBS (pH 7.4) with 0.05% sodium azide, 10mg/ml BSA, 50% glycerol
Concentration:	0.5 mg/ml
Conjugation:	Biotin
Storage:	Store at -20°C as received.
Stability:	Stable for 12 months from date of receipt.
Gene Name:	haptoglobin
Database Link:	NP_005134 Entrez Gene 3240 Human P00738
Synonyms:	BP; HP2ALPHA2; HPA1S
Matched ELISA Pair:	TA600399, TA600401, TA600402
Protein Families:	Druggable Genome, Protease, Secreted Protein, Transmembrane

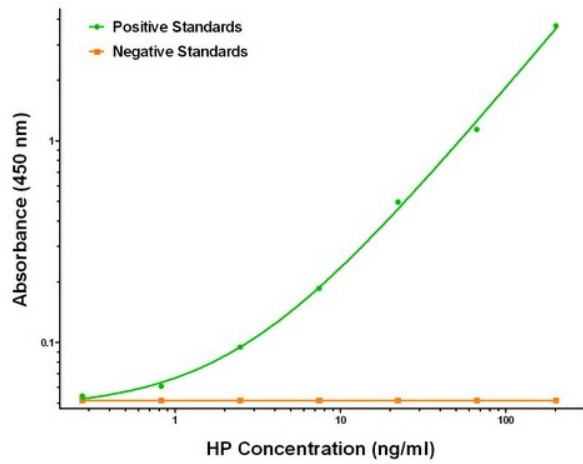


[View online »](#)

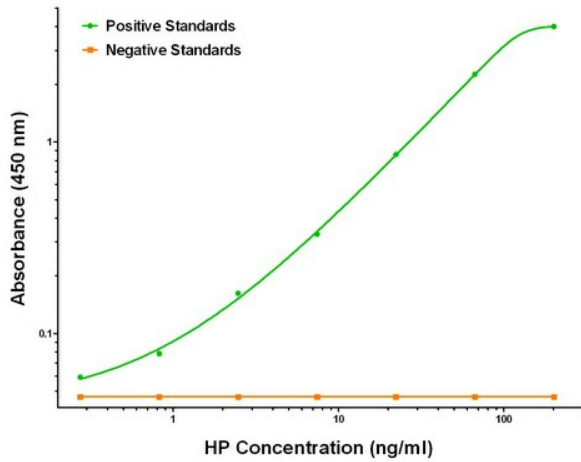
Product images:



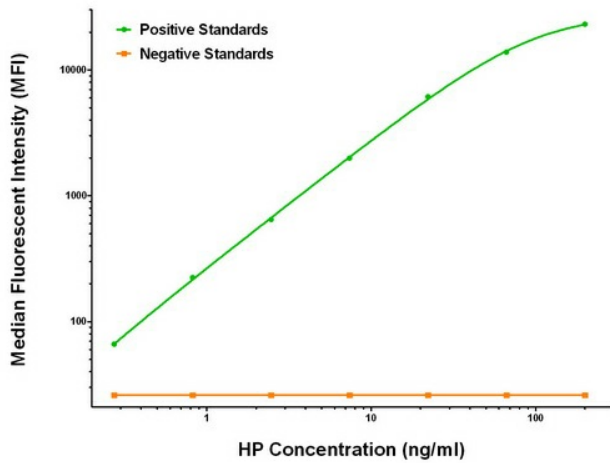
HP ELISA with 1F9 Capture ([TA600399]) and 2B8 Detection (TA700399) Antibodies. Substrate used: Recombinant Human HP ([TP323612])



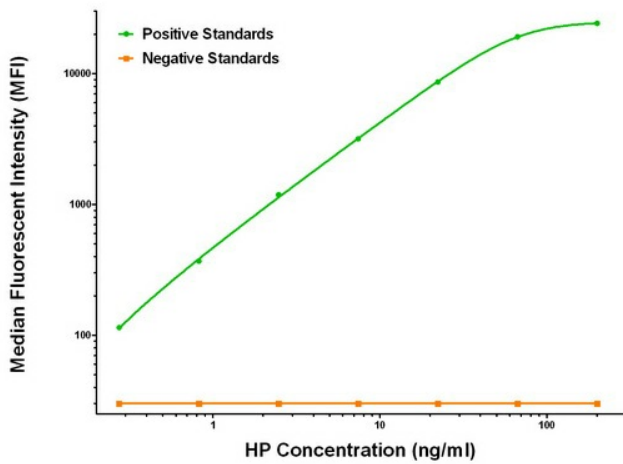
HP ELISA with 4C2 Capture ([TA600401]) and 2B8 Detection (TA700399) Antibodies. Substrate used: Recombinant Human HP ([TP323612])



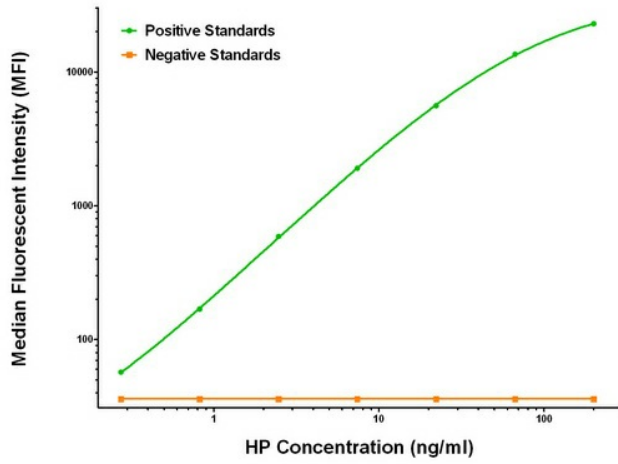
HP ELISA with 6H2 Capture ([TA600402]) and 2B8 Detection (TA700399) Antibodies. Substrate used: Recombinant Human HP ([TP323612])



HP Luminex ELISA with 1F9 Capture ([TA600399]) and 2B8 Detection (TA700399) Antibodies. Substrate used: Recombinant Human HP ([TP323612])



HP Luminex ELISA with 4C2 Capture ([TA600401]) and 2B8 Detection (TA700399) Antibodies. Substrate used: Recombinant Human HP ([TP323612])



HP Luminex ELISA with 6H2 Capture ([TA600402]) and 2B8 Detection (TA700399) Antibodies. Substrate used: Recombinant Human HP ([TP323612])