

## Product datasheet for **TA700326**

### Cytochrome P450 17A1 (CYP17A1) Biotinylated Mouse Monoclonal Detection Antibody (Biotin conjugated) [Clone ID: OTI3D9]

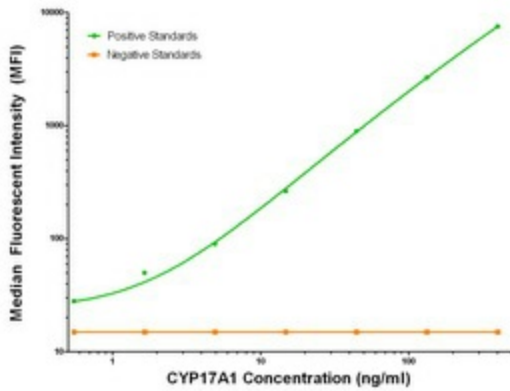
#### Product data:

Product Type:	Primary Antibodies
Clone Name:	OTI3D9
Applications:	LMNX
Recommended Dilution:	1:250 - 1:1000
Reactivity:	Human
Host:	Mouse
Isotype:	IgG1
Clonality:	Monoclonal
Immunogen:	Full length human recombinant protein of human CYP17A1 (NM_000102) produced in HEK293T cell.
Formulation:	Stored in PBS (pH 7.4) with 0.05% sodium azide, 10mg/ml BSA, 50% glycerol
Concentration:	0.5 mg/ml
Conjugation:	Biotin
Storage:	Store at -20°C as received.
Stability:	Stable for 12 months from date of receipt.
Gene Name:	cytochrome P450 family 17 subfamily A member 1
Database Link:	<a href="#">NP_000093</a> <a href="#">Entrez Gene 1586 Human P05093</a>
Synonyms:	CPT7; CYP17; P450C17; S17AH
Matched ELISA Pair:	TA600326, TA600327
Protein Families:	Druggable Genome, P450
Protein Pathways:	C21-Steroid hormone metabolism, Metabolic pathways

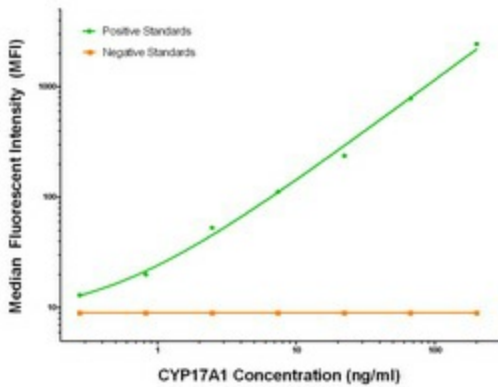


[View online »](#)

**Product images:**



CYP17A1 Luminex Elisa with 5G10 Capture ([TA600326]) and 3D9 Detection (TA700326) Antibodies. Substrate used: Recombinant Human CYP17A1 ([TP309042])



CYP17A1 Luminex Elisa with 9H4 Capture ([TA600327]) and 3D9 Detection (TA700326) Antibodies. Substrate used: Recombinant Human CYP17A1 ([TP309042])