

## Product datasheet for **TA700271**

### **TLE 1 (TLE1) Biotinylated Mouse Monoclonal Detection Antibody (Biotin conjugated) [Clone ID: OTI3C9]**

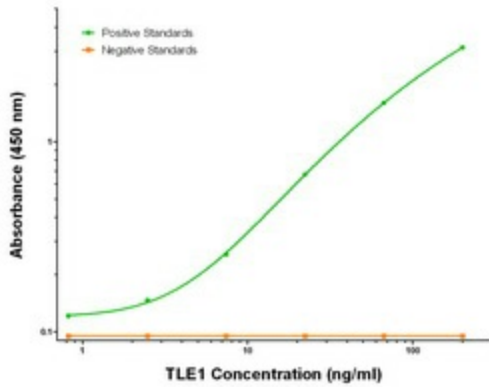
#### Product data:

Product Type:	Primary Antibodies
Clone Name:	OTI3C9
Applications:	ELISA, LMNX
Recommended Dilution:	1:250 - 1:1000
Reactivity:	Human, Mouse, Rat
Host:	Mouse
Isotype:	IgG1
Clonality:	Monoclonal
Immunogen:	Full length human recombinant protein of human TLE1 (NM_005077) produced in HEK293T cell.
Formulation:	Stored in PBS (pH 7.4) with 0.05% sodium azide, 10mg/ml BSA, 50% glycerol
Concentration:	0.5 mg/ml
Conjugation:	Biotin
Storage:	Store at -20°C as received.
Stability:	Stable for 12 months from date of receipt.
Gene Name:	TLE family member 1, transcriptional corepressor
Database Link:	<a href="#">NP_005068</a> <a href="#">Entrez Gene 21885 MouseEntrez Gene 362533 RatEntrez Gene 7088 Human Q04724</a>
Synonyms:	ESG; ESG1; GRG1
Matched ELISA Pair:	TA600268
Protein Families:	Transcription Factors

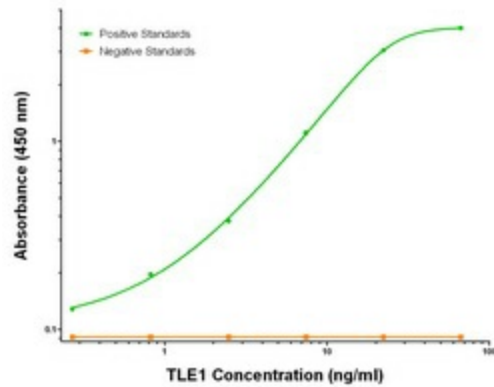


[View online »](#)

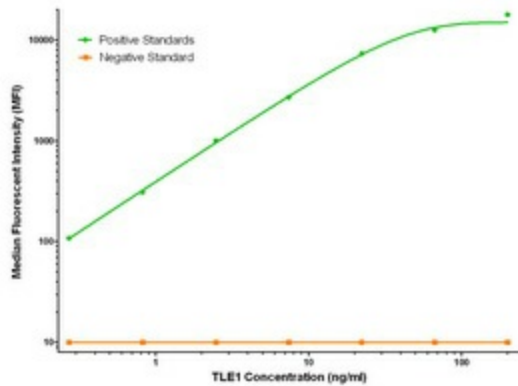
**Product images:**



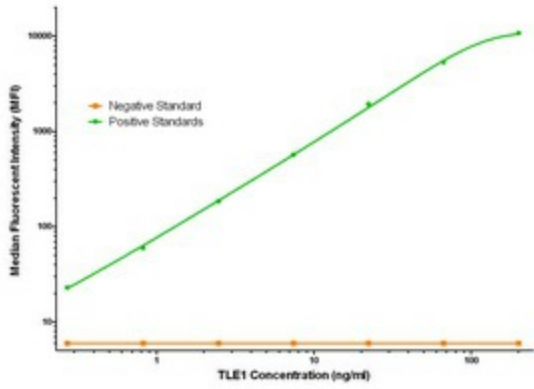
TLE1 Elisa with 2D8 Capture ([TA600269]) and 3C9 Detection (TA700271) Antibodies. Substrate used: Recombinant Human TLE1 ([TP304037])



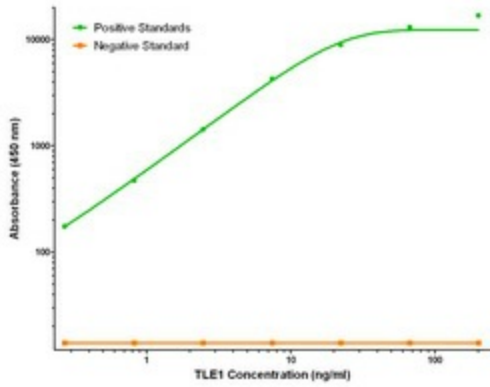
TLE1 Elisa with 3H3 Capture ([TA600268]) and 3C9 Detection (TA700271) Antibodies. Substrate used: Recombinant Human TLE1 ([TP304037])



TLE1 Luminex Elisa with 1F9 Capture ([TA600271]) and 3C9 Detection (TA700271) Antibodies. Substrate used: Recombinant Human TLE1 ([TP304037])



TLE1 Luminex Elisa with 2D8 Capture ([TA600269]) and 3C9 Detection (TA700271) Antibodies. Substrate used: Recombinant Human TLE1 ([TP304037])



TLE1 Luminex Elisa with 3H3 Capture ([TA600268]) and 3C9 Detection (TA700271) Antibodies. Substrate used: Recombinant Human TLE1 ([TP304037])