

## Product datasheet for **TA700225**

### **TYRO3 Biotinylated Mouse Monoclonal Detection Antibody (Biotin conjugated) [Clone ID: OTI9B12]**

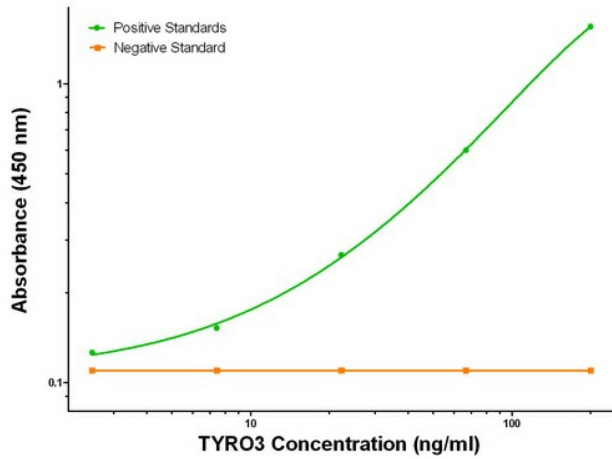
#### Product data:

Product Type:	Primary Antibodies
Clone Name:	OTI9B12
Applications:	ELISA, LMNX
Recommended Dilution:	1:250 - 1:1000
Reactivity:	Human, Mouse, Rat
Host:	Mouse
Isotype:	IgG1
Clonality:	Monoclonal
Immunogen:	Full length human recombinant protein of human TYRO3 (NM_006293) produced in HEK293T cell.
Formulation:	Stored in PBS (pH 7.4) with 0.05% sodium azide, 10mg/ml BSA, 50% glycerol
Concentration:	0.5 mg/ml
Conjugation:	Biotin
Storage:	Store at -20°C as received.
Stability:	Stable for 12 months from date of receipt.
Gene Name:	TYRO3 protein tyrosine kinase
Database Link:	<a href="#">NP_006284</a> <a href="#">Entrez Gene 22174 Mouse</a> <a href="#">Entrez Gene 25232 Rat</a> <a href="#">Entrez Gene 7301 Human</a> <a href="#">Q06418</a>
Synonyms:	BYK; Dtk; Etk-2; Rek; RSE; Sky; Tif
Matched ELISA Pair:	TA600225, TA600226, TA600227, TA600228
Protein Families:	Druggable Genome, Protein Kinase

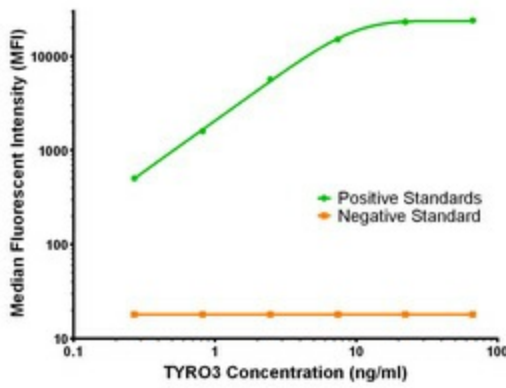


[View online »](#)

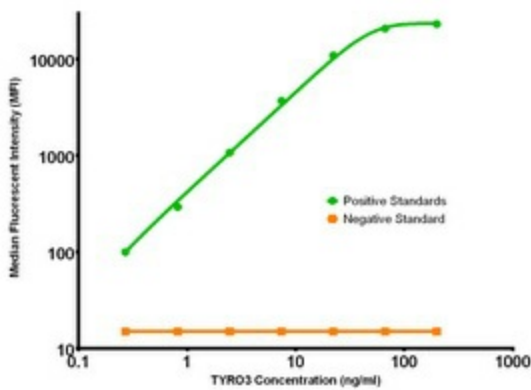
**Product images:**



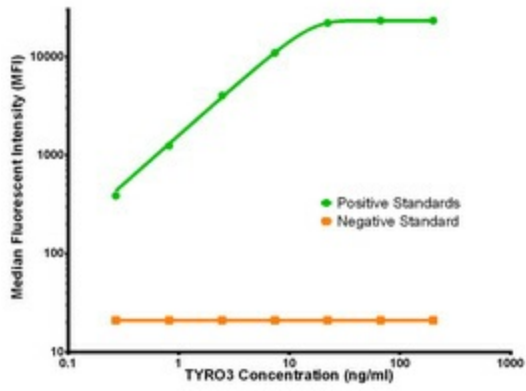
TYRO3 ELISA with 2G2 Capture ([TA600228]) and 9B12 Detection (TA700225) Antibodies. Substrate used: Recombinant Human TYRO3 ([TP308260])



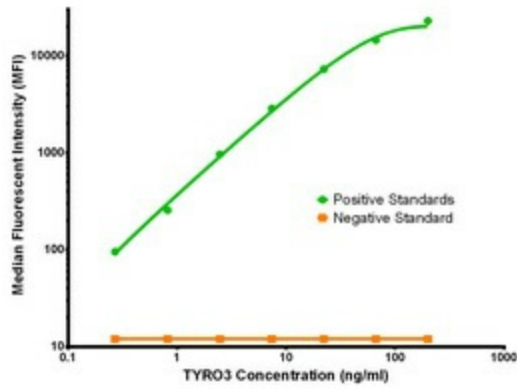
TYRO3 Luminex Elisa with 5B4 Capture ([TA600225]) and 9B12 Detection (TA700225) Antibodies. Substrate used: Recombinant Human TYRO3 ([TP308260])



TYRO3 Luminex Elisa with 4C8 Capture ([TA600226]) and 9B12 Detection (TA700225) Antibodies. Substrate used: Recombinant Human TYRO3 ([TP308260])



TYRO3 Luminex Elisa with 2D11 Capture ([TA600227]) and 9B12 Detection (TA700225) Antibodies. Substrate used: Recombinant Human TYRO3 ([TP308260])



TYRO3 Luminex Elisa with 2G2 Capture ([TA600228]) and 9B12 Detection (TA700225) Antibodies. Substrate used: Recombinant Human TYRO3 ([TP308260])