

## Product datasheet for **TA600555**

### IL17 (IL17A) Mouse Monoclonal Capture Antibody [Clone ID: OTI3D5]

#### Product data:

Product Type:	Primary Antibodies
Clone Name:	OTI3D5
Applications:	ELISA, LMNX
Reactivity:	Human
Host:	Mouse
Isotype:	IgG1
Clonality:	Monoclonal
Immunogen:	Full length human recombinant protein of human IL-17A (NP_002181) produced in 293 cell.
Formulation:	PBS (pH7.3) containing 0.05% sodium azide
Concentration:	0.5 mg/ml
Purification:	Purified from mouse ascites fluids or tissue culture supernatant by affinity chromatography (protein A/G)
Conjugation:	Unconjugated
Storage:	Store at -20°C. Avoid repeat freeze/thaw cycles.
Predicted Protein Size:	17.5 kDa
Gene Name:	interleukin 17A
Database Link:	<a href="#">NP_002181</a> <a href="#">Entrez Gene 3605 Human</a> <a href="#">Q16552</a>
Background:	The protein encoded by this gene is a proinflammatory cytokine produced by activated T cells. This cytokine regulates the activities of NF-kappaB and mitogen-activated protein kinases. This cytokine can stimulate the expression of IL6 and cyclooxygenase-2 (PTGS2/COX-2), as well as enhance the production of nitric oxide (NO). High levels of this cytokine are associated with several chronic inflammatory diseases including rheumatoid arthritis, psoriasis and multiple sclerosis. [provided by RefSeq, Jul 2008]
Synonyms:	CTLA-8; CTLA8; IL-17; IL-17A; IL17; ILA17
Matched ELISA Pair:	TA600556, TA700556

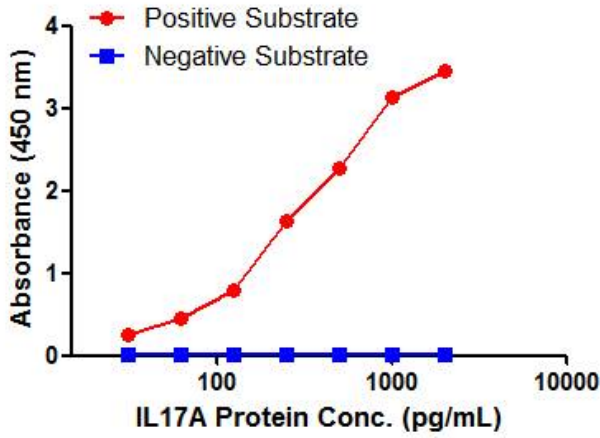


[View online »](#)

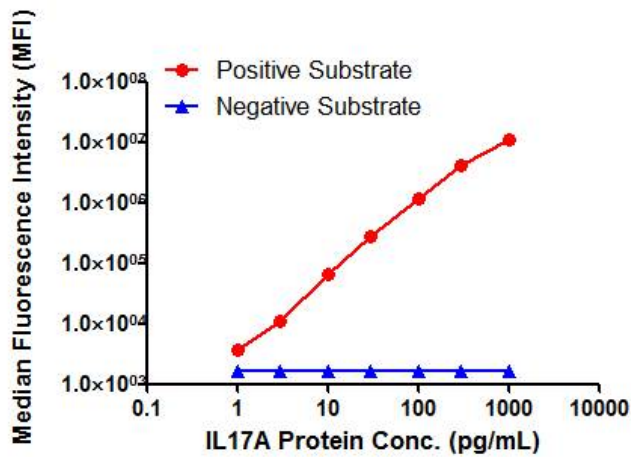
Protein Families: Druggable Genome, Secreted Protein

Protein Pathways: Cytokine-cytokine receptor interaction

**Product images:**



IL17A ELISA with 3D5 Capture (TA600555) and 1E4 Detection ([TA700556]) Antibodies. Substrate used: Recombinant Human IL17A (KEK293 cells expressed protein)



IL17A Luminex ELISA with 3D5 Capture (TA600555) and 1E4 Detection ([TA700556]) Antibodies. Substrate used: Recombinant Human IL17A (KEK293 cells expressed protein)