

## Product datasheet for **TA600489**

### **B7-1 (CD80) Mouse Monoclonal Capture Antibody [Clone ID: OTI2B11]**

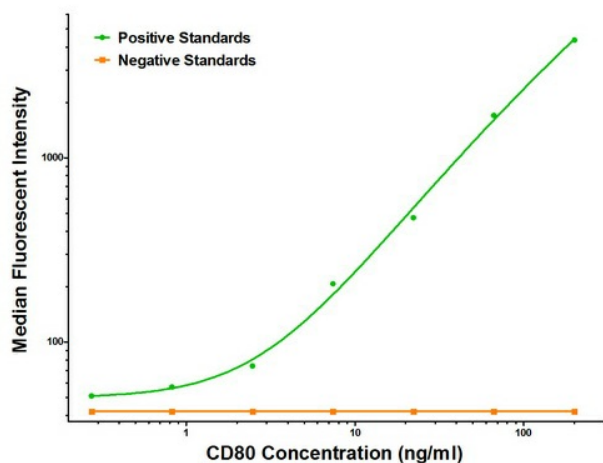
#### **Product data:**

<b>Product Type:</b>	Primary Antibodies
<b>Clone Name:</b>	OTI2B11
<b>Applications:</b>	LMNX
<b>Recommended Dilution:</b>	1:100 - 1:1000
<b>Reactivity:</b>	Human
<b>Host:</b>	Mouse
<b>Isotype:</b>	IgG1
<b>Clonality:</b>	Monoclonal
<b>Immunogen:</b>	Full length human recombinant protein of human CD80 (NM_005191) produced in HEK293T cell.
<b>Formulation:</b>	Stored in PBS (pH 7.4) containing 0.05% sodium azide and up to 5% trehalose
<b>Concentration:</b>	0.5 mg/ml
<b>Conjugation:</b>	Unconjugated
<b>Storage:</b>	Store at -20°C. Avoid repeat freeze/thaw cycles.
<b>Stability:</b>	Stable for 12 months from date of receipt.
<b>Gene Name:</b>	CD80 molecule
<b>Database Link:</b>	<a href="#">NP_005182</a> <a href="#">Entrez Gene 941 Human</a> <a href="#">P33681</a>
<b>Synonyms:</b>	B7; B7-1; B7.1; BB1; CD28LG; CD28LG1; LAB7
<b>Matched ELISA Pair:</b>	TA700490
<b>Protein Families:</b>	Druggable Genome, Transcription Factors, Transmembrane
<b>Protein Pathways:</b>	Allograft rejection, Autoimmune thyroid disease, Cell adhesion molecules (CAMs), Graft-versus-host disease, Systemic lupus erythematosus, Toll-like receptor signaling pathway, Type I diabetes mellitus, Viral myocarditis



[View online »](#)

## Product images:



CD80 Luminex ELISA with 2B11 Capture (TA600489) and 2E5 Detection ([TA700490]) Antibodies. Substrate used: Recombinant Human CD80 ([TP306540])