

Product datasheet for **TA600455**

MAGEA3 Mouse Monoclonal Capture Antibody [Clone ID: OTI4E2]

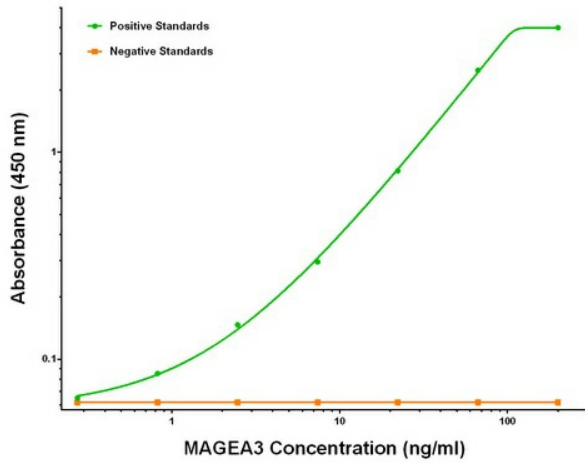
Product data:

| | |
|-----------------------|---|
| Product Type: | Primary Antibodies |
| Clone Name: | OTI4E2 |
| Applications: | ELISA |
| Recommended Dilution: | ELISA 1:100-1:1000 |
| Reactivity: | Human |
| Host: | Mouse |
| Isotype: | IgG1 |
| Clonality: | Monoclonal |
| Immunogen: | Full length human recombinant protein of human MAGEA3 (NM_005362) produced in HEK293T cell. |
| Formulation: | Stored in PBS (pH 7.4) containing 0.05% sodium azide and up to 5% trehalose |
| Concentration: | 0.5 mg/ml |
| Conjugation: | Unconjugated |
| Storage: | Store at -20°C. Avoid repeat freeze/thaw cycles. |
| Stability: | Stable for 12 months from date of receipt. |
| Gene Name: | MAGE family member A3 |
| Database Link: | NP_005353 Entrez Gene 4102 Human P43357 |
| Synonyms: | CT1.3; HIP8; HYPD; MAGE3; MAGEA6 |

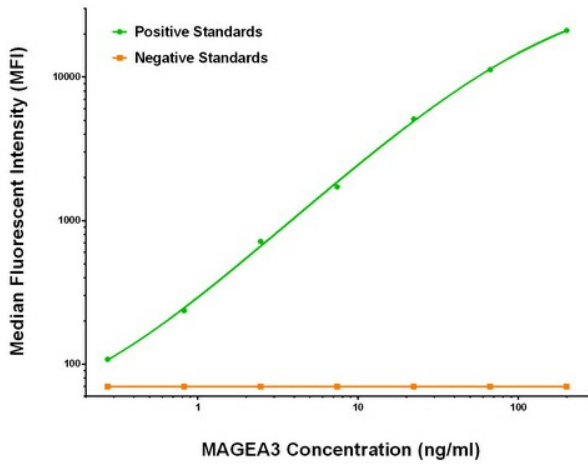


[View online »](#)

Product images:



MAGEA3 ELISA with 4E2 Capture (TA600455) and 24B6 Detection ([TA700455]) Antibodies. Substrate used: Recombinant Human MAGEA3 ([TP303288])



MAGEA3 Luminex ELISA with 4E2 Capture (TA600455) and 24B6 Detection ([TA700455]) Antibodies. Substrate used: Recombinant Human MAGEA3 ([TP303288])