

## Product datasheet for **TA600441**

### **PADI4 Mouse Monoclonal Capture Antibody [Clone ID: OTI5B7]**

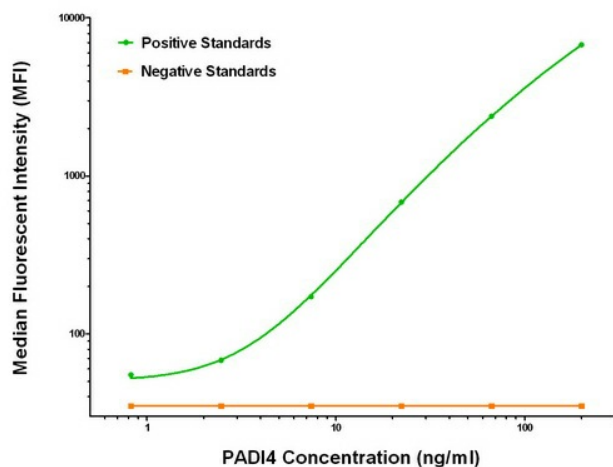
#### **Product data:**

Product Type:	Primary Antibodies
Clone Name:	OTI5B7
Applications:	LMNX
Recommended Dilution:	1:100 - 1:1000
Reactivity:	Human
Host:	Mouse
Isotype:	IgG1
Clonality:	Monoclonal
Immunogen:	Full length human recombinant protein of human PADI4 (NM_012387) produced in HEK293T cell.
Formulation:	Stored in PBS (pH 7.4) containing 0.05% sodium azide and up to 5% trehalose
Concentration:	0.5 mg/ml
Conjugation:	Unconjugated
Storage:	Store at -20°C. Avoid repeat freeze/thaw cycles.
Stability:	Stable for 12 months from date of receipt.
Gene Name:	peptidyl arginine deiminase 4
Database Link:	<a href="#">NP_036519</a> <a href="#">Entrez Gene 23569 Human</a> <a href="#">Q9UM07</a>
Synonyms:	PAD; PAD4; PADI5; PDI4; PDI5
Matched ELISA Pair:	TA700440



[View online »](#)

## Product images:



PADI4 Luminex ELISA with 5B7 Capture (TA600441) and 5C10 Detection ([TA700440]) Antibodies. Substrate used: Recombinant Human PADI4 ([TP306501])