

## Product datasheet for **TA600404**

### EPHX2 Mouse Monoclonal Capture Antibody [Clone ID: OT11H5]

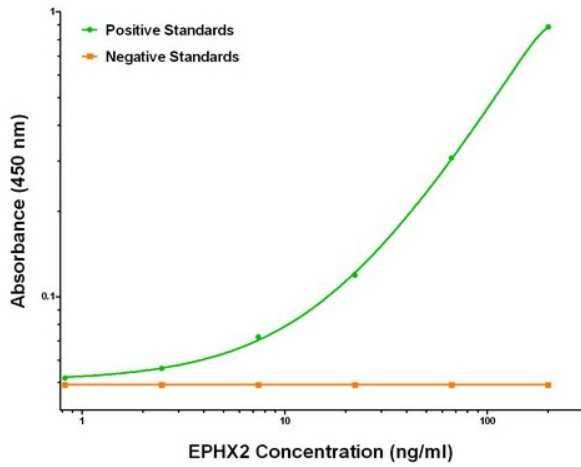
#### Product data:

Product Type:	Primary Antibodies
Clone Name:	OT11H5
Applications:	ELISA
Recommended Dilution:	ELISA 1:100-1:1000
Reactivity:	Human
Host:	Mouse
Isotype:	IgG1
Clonality:	Monoclonal
Immunogen:	Full length human recombinant protein of human EPHX2 (NM_001979) produced in HEK293T cell.
Formulation:	Stored in PBS (pH 7.4) containing 0.05% sodium azide and up to 5% trehalose
Concentration:	0.5 mg/ml
Conjugation:	Unconjugated
Storage:	Store at -20°C. Avoid repeat freeze/thaw cycles.
Stability:	Stable for 12 months from date of receipt.
Gene Name:	epoxide hydrolase 2
Database Link:	<a href="#">NP_001970</a> <a href="#">Entrez Gene 2053 Human</a> <a href="#">P34913</a>
Synonyms:	CEH; SEH
Matched ELISA Pair:	TA700404, TA700405
Protein Pathways:	Arachidonic acid metabolism, Metabolic pathways

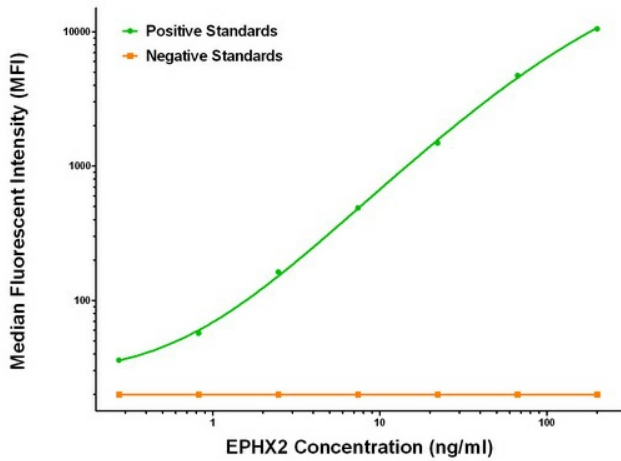


[View online »](#)

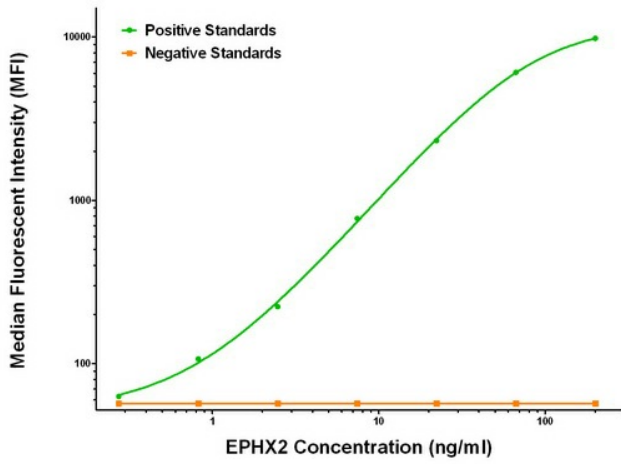
Product images:



EPHX2 ELISA with 1H5 Capture (TA600404) and 1A6 Detection ([TA700404]) Antibodies. Substrate used: Recombinant Human EPHX2 ([TP302489])



EPHX2 Luminex ELISA with 1H5 Capture (TA600404) and 1A6 Detection ([TA700404]) Antibodies. Substrate used: Recombinant Human EPHX2 ([TP302489])



EPHX2 Luminex ELISA with 1H5 Capture (TA600404) and 2G2 Detection ([TA700405]) Antibodies. Substrate used: Recombinant Human EPHX2 ([TP302489])