

Product datasheet for **TA600326**

Cytochrome P450 17A1 (CYP17A1) Mouse Monoclonal Capture Antibody [Clone ID: OTI5G10]

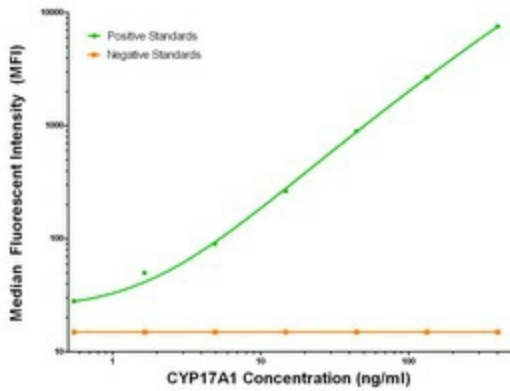
Product data:

Product Type:	Primary Antibodies
Clone Name:	OTI5G10
Applications:	LMNX
Recommended Dilution:	1:100 - 1:1000
Reactivity:	Human
Host:	Mouse
Isotype:	IgG1
Clonality:	Monoclonal
Immunogen:	Full length human recombinant protein of human CYP17A1 (NM_000102) produced in HEK293T cell.
Formulation:	Stored in PBS (pH 7.4) containing 0.05% sodium azide and up to 5% trehalose
Concentration:	0.5 mg/ml
Conjugation:	Unconjugated
Storage:	Store at -20°C. Avoid repeat freeze/thaw cycles.
Stability:	Stable for 12 months from date of receipt.
Gene Name:	cytochrome P450 family 17 subfamily A member 1
Database Link:	NP_000093 Entrez Gene 1586 Human P05093
Synonyms:	CPT7; CYP17; P450C17; S17AH
Matched ELISA Pair:	TA700326
Protein Families:	Druggable Genome, P450
Protein Pathways:	C21-Steroid hormone metabolism, Metabolic pathways



[View online »](#)

Product images:



CYP17A1 Luminex Elisa with 5G10 Capture (TA600326) and 3D9 Detection ([TA700326]) Antibodies. Substrate used: Recombinant Human CYP17A1 ([TP309042])