

Product datasheet for **TA600269**

TLE 1 (TLE1) Mouse Monoclonal Capture Antibody [Clone ID: OTI2D8]

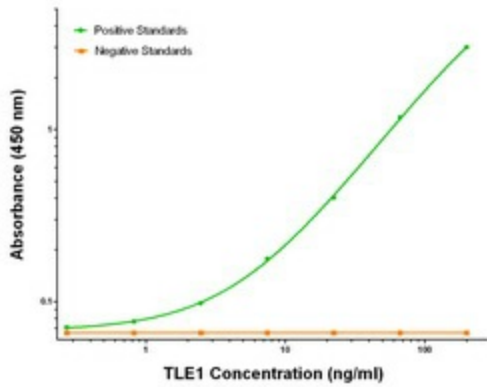
Product data:

Product Type:	Primary Antibodies
Clone Name:	OTI2D8
Applications:	ELISA, LMNX
Recommended Dilution:	1:100 - 1:1000
Reactivity:	Human, Mouse, Rat
Host:	Mouse
Isotype:	IgG1
Clonality:	Monoclonal
Immunogen:	Full length human recombinant protein of human TLE1 (NM_005077) produced in HEK293T cell.
Formulation:	Stored in PBS (pH 7.4) containing 0.05% sodium azide and up to 5% trehalose
Concentration:	0.5 mg/ml
Conjugation:	Unconjugated
Storage:	Store at -20°C. Avoid repeat freeze/thaw cycles.
Stability:	Stable for 12 months from date of receipt.
Gene Name:	TLE family member 1, transcriptional corepressor
Database Link:	NP_005068 Entrez Gene 21885 Mouse Entrez Gene 362533 Rat Entrez Gene 7088 Human Q04724
Synonyms:	ESG; ESG1; GRG1
Matched ELISA Pair:	TA700268, TA700272, TA700293
Protein Families:	Transcription Factors

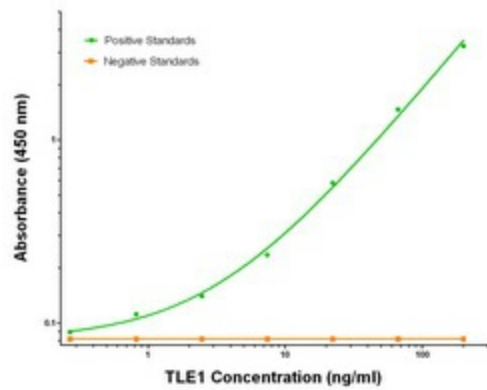


[View online »](#)

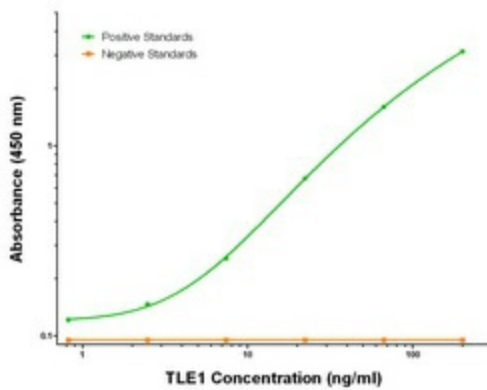
Product images:



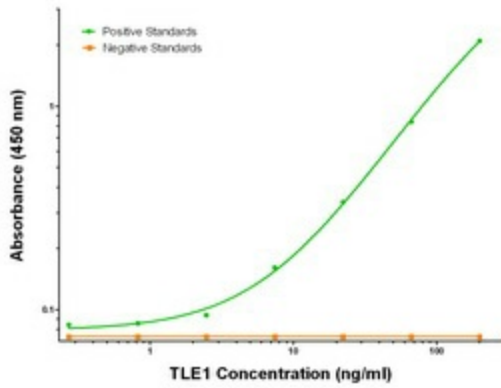
TLE1 Elisa with 2D8 Capture (TA600269) and 1F5 Detection ([TA700268]) Antibodies. Substrate used: Recombinant Human TLE1 ([TP304037])



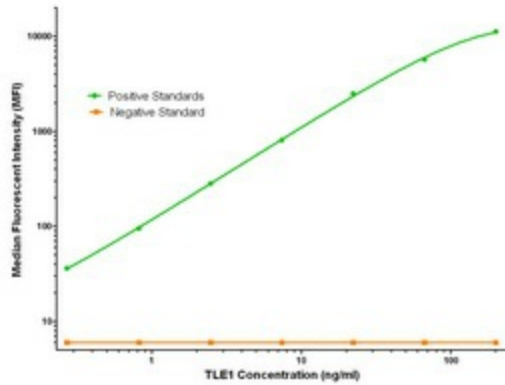
TLE1 Elisa with 2D8 Capture (TA600269) and 3H3 Detection ([TA700272]) Antibodies. Substrate used: Recombinant Human TLE1 ([TP304037])



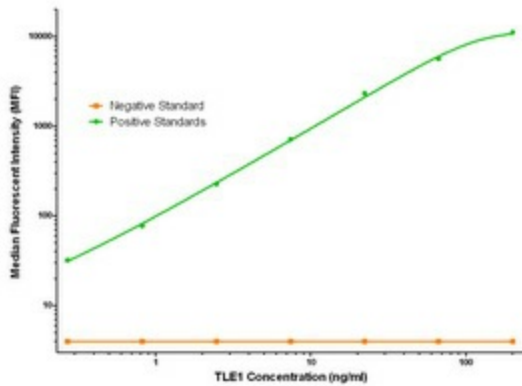
TLE1 Elisa with 2D8 Capture (TA600269) and 3C9 Detection ([TA700271]) Antibodies. Substrate used: Recombinant Human TLE1 ([TP304037])



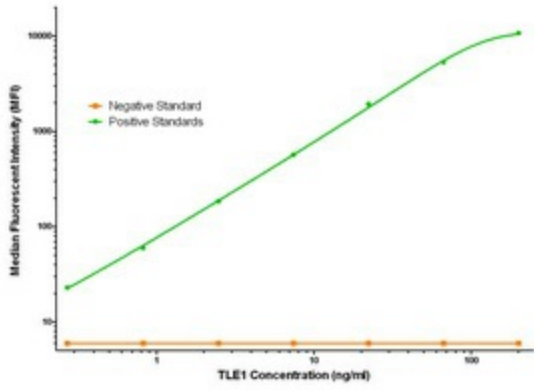
TLE1 Elisa with 2D8 Capture (TA600269) and 1F9 Detection ([TA700293]) Antibodies. Substrate used: Recombinant Human TLE1 ([TP304037])



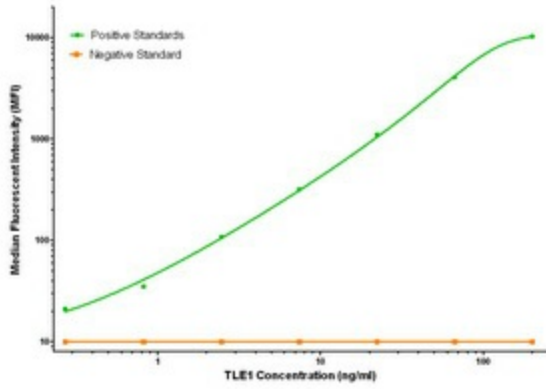
TLE1 Luminex Elisa with 2D8 Capture (TA600269) and 1F5 Detection ([TA700268]) Antibodies. Substrate used: Recombinant Human TLE1 ([TP304037])



TLE1 Luminex Elisa with 2D8 Capture (TA600269) and 1F9 Detection ([TA700293]) Antibodies. Substrate used: Recombinant Human TLE1 ([TP304037])



TLE1 Luminex Elisa with 2D8 Capture (TA600269) and 3C9 Detection ([TA700271]) Antibodies. Substrate used: Recombinant Human TLE1 ([TP304037])



TLE1 Luminex Elisa with 2D8 Capture (TA600269) and 3H3 Detection ([TA700272]) Antibodies. Substrate used: Recombinant Human TLE1 ([TP304037])