

## Product datasheet for **TA600268**

### TLE 1 (TLE1) Mouse Monoclonal Capture Antibody [Clone ID: OTI3H3]

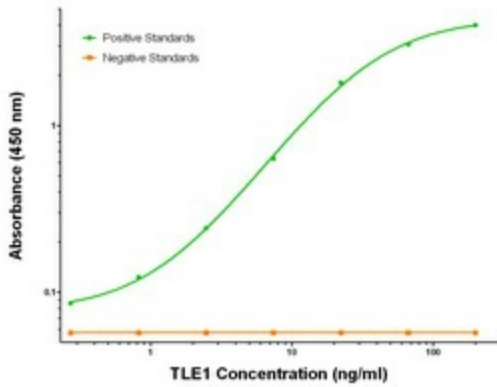
#### Product data:

Product Type:	Primary Antibodies
Clone Name:	OTI3H3
Applications:	ELISA, LMNX
Recommended Dilution:	1:100 - 1:1000
Reactivity:	Human, Mouse, Rat
Host:	Mouse
Isotype:	IgG1
Clonality:	Monoclonal
Immunogen:	Full length human recombinant protein of human TLE1 (NM_005077) produced in HEK293T cell.
Formulation:	Stored in PBS (pH 7.4) containing 0.05% sodium azide and up to 5% trehalose
Concentration:	0.5 mg/ml
Conjugation:	Unconjugated
Storage:	Store at -20°C. Avoid repeat freeze/thaw cycles.
Stability:	Stable for 12 months from date of receipt.
Gene Name:	TLE family member 1, transcriptional corepressor
Database Link:	<a href="#">NP_005068</a> <a href="#">Entrez Gene 21885 Mouse</a> <a href="#">Entrez Gene 362533 Rat</a> <a href="#">Entrez Gene 7088 Human</a> <a href="#">Q04724</a>
Synonyms:	ESG; ESG1; GRG1
Matched ELISA Pair:	TA700268, TA700269, TA700270, TA700271
Protein Families:	Transcription Factors

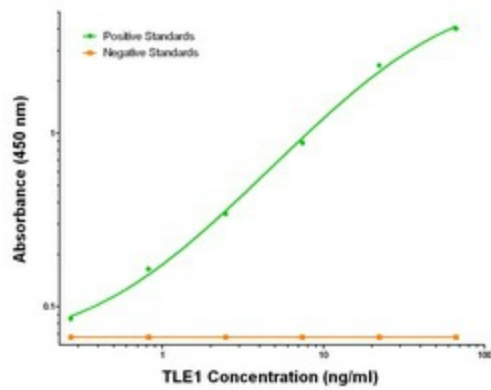


[View online »](#)

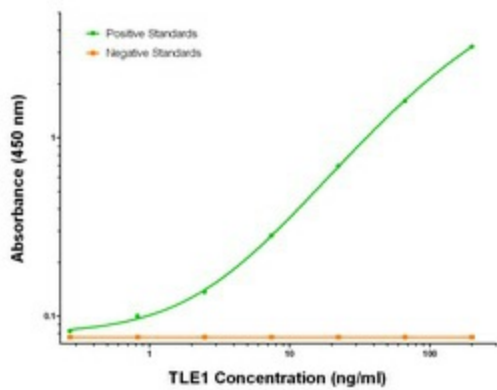
Product images:



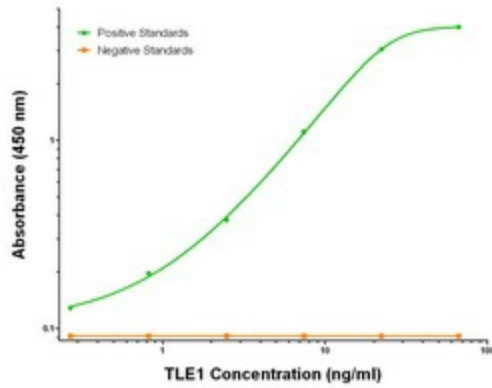
TLE1 Elisa with 3H3 Capture (TA600268) and 1F5 Detection ([TA700268]) Antibodies. Substrate used: Recombinant Human TLE1 ([TP304037])



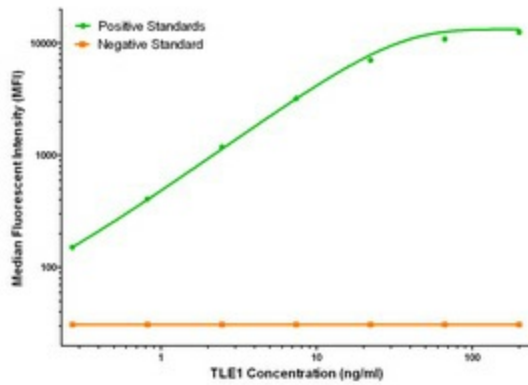
TLE1 Elisa with 3H3 Capture (TA600268) and 2D8 Detection ([TA700269]) Antibodies. Substrate used: Recombinant Human TLE1 ([TP304037])



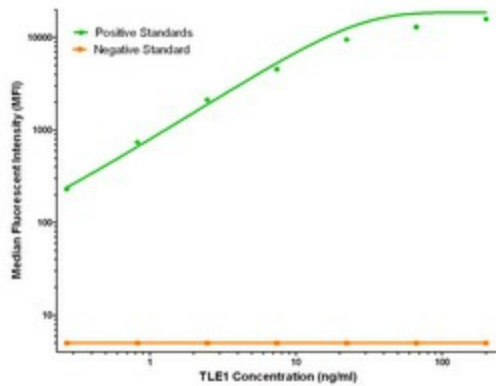
TLE1 Elisa with 3H3 Capture (TA600268) and 1D6 Detection ([TA700270]) Antibodies. Substrate used: Recombinant Human TLE1 ([TP304037])



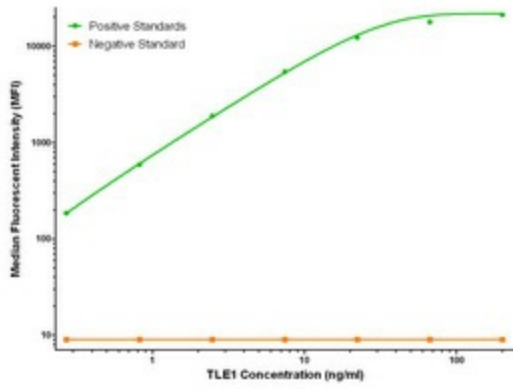
TLE1 Elisa with 3H3 Capture (TA600268) and 3C9 Detection ([TA700271]) Antibodies. Substrate used: Recombinant Human TLE1 ([TP304037])



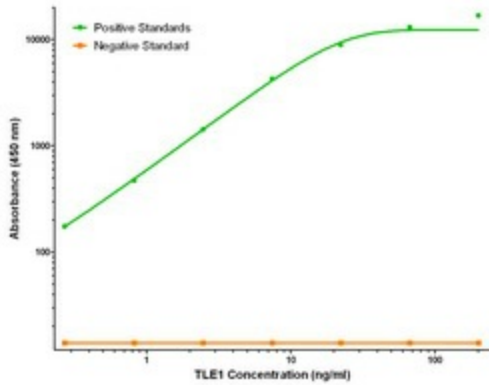
TLE1 Luminex Elisa with 3H3 Capture (TA600268) and 1D6 Detection ([TA700270]) Antibodies. Substrate used: Recombinant Human TLE1 ([TP304037])



TLE1 Luminex Elisa with 3H3 Capture (TA600268) and 1F5 Detection ([TA700268]) Antibodies. Substrate used: Recombinant Human TLE1 ([TP304037])



TLE1 Luminex Elisa with 3H3 Capture (TA600268) and 2D8 Detection ([TA700269]) Antibodies. Substrate used: Recombinant Human TLE1 ([TP304037])



TLE1 Luminex Elisa with 3H3 Capture (TA600268) and 3C9 Detection ([TA700271]) Antibodies. Substrate used: Recombinant Human TLE1 ([TP304037])