

Product datasheet for **TA600227**

TYRO3 Mouse Monoclonal Capture Antibody [Clone ID: OTI2D11]

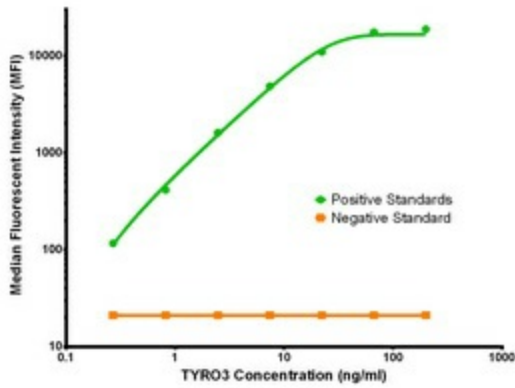
Product data:

Product Type:	Primary Antibodies
Clone Name:	OTI2D11
Applications:	LMNX
Recommended Dilution:	1:100 - 1:1000
Reactivity:	Human, Mouse, Rat
Host:	Mouse
Isotype:	IgG1
Clonality:	Monoclonal
Immunogen:	Full length human recombinant protein of human TYRO3 (NP_006284) produced in HEK293T cell.
Formulation:	Stored in PBS (pH 7.4) containing 0.05% sodium azide and up to 5% trehalose
Concentration:	0.5 mg/ml
Conjugation:	Unconjugated
Storage:	Store at -20°C. Avoid repeat freeze/thaw cycles.
Stability:	Stable for 12 months from date of receipt.
Gene Name:	TYRO3 protein tyrosine kinase
Database Link:	NP_006284 Entrez Gene 22174 Mouse Entrez Gene 25232 Rat Entrez Gene 7301 Human Q06418
Synonyms:	BYK; Dtk; Etk-2; Rek; RSE; Sky; Tif
Matched ELISA Pair:	TA700225, TA700226
Protein Families:	Druggable Genome, Protein Kinase

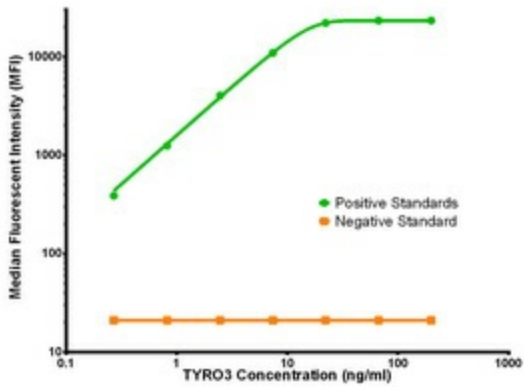


[View online »](#)

Product images:



TYRO3 Luminex Elisa with 2D11 Capture (TA600227) and 5B4 Detection ([TA700226]) Antibodies. Substrate used: Recombinant Human TYRO3 ([TP308260])



TYRO3 Luminex Elisa with 2D11 Capture (TA600227) and 9B12 Detection ([TA700225]) Antibodies. Substrate used: Recombinant Human TYRO3 ([TP308260])