

## Product datasheet for **TA600090**

### Factor XIIIa (F13A1) Mouse Monoclonal Capture Antibody [Clone ID: OTI3F1]

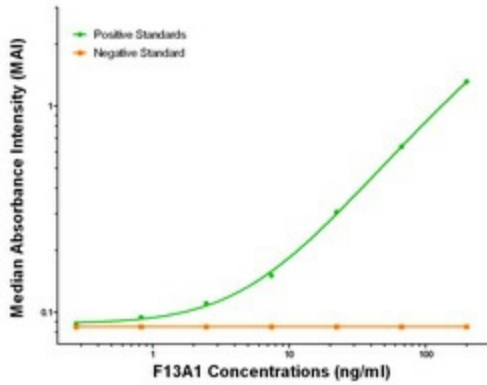
#### Product data:

Product Type:	Primary Antibodies
Clone Name:	OTI3F1
Applications:	ELISA, LMNX
Recommended Dilution:	1:100 - 1:1000
Reactivity:	Human, Mouse, Rat
Host:	Mouse
Isotype:	IgG1
Clonality:	Monoclonal
Immunogen:	Full length human recombinant protein of human F13A1 (NM_000129) produced in HEK293T cell.
Formulation:	Stored in PBS (pH 7.4) containing 0.05% sodium azide and up to 5% trehalose
Concentration:	0.5 mg/ml
Conjugation:	Unconjugated
Storage:	Store at -20°C. Avoid repeat freeze/thaw cycles.
Stability:	Stable for 12 months from date of receipt.
Gene Name:	coagulation factor XIII A chain
Database Link:	<a href="#">NP_000120</a> <a href="#">Entrez Gene 60327 Rat</a> <a href="#">Entrez Gene 74145 Mouse</a> <a href="#">Entrez Gene 2162 Human</a> <a href="#">P00488</a>
Synonyms:	F13A
Matched ELISA Pair:	TA700088
Protein Families:	Druggable Genome, Secreted Protein
Protein Pathways:	Complement and coagulation cascades

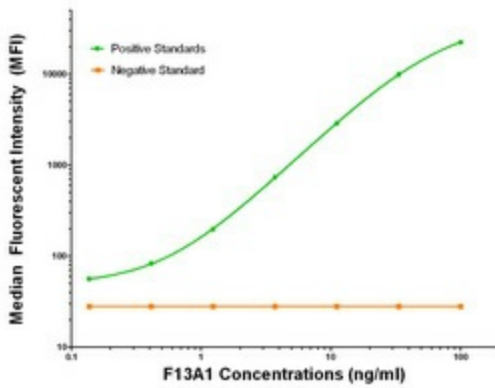


[View online »](#)

Product images:



F13A1 ELISA with 3F1 Capture (TA600090) and 8E2 Detection ([TA700088]) Antibodies. Substrate used: Recombinant Human F13A1 ([TP306464])



F13A1 Luminex with 3F1 Capture (TA600090) and 8E2 Detection ([TA700088]) Antibodies. Substrate used: Recombinant Human F13A1 ([TP306464])