

Product datasheet for **TA600006**

Chk2 (CHEK2) Mouse Monoclonal Capture Antibody [Clone ID: OTI2F4]

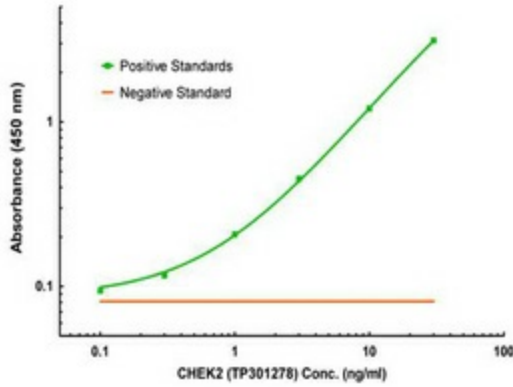
Product data:

Product Type:	Primary Antibodies
Clone Name:	OTI2F4
Applications:	ELISA, LMNX
Recommended Dilution:	1:100 - 1:1000
Reactivity:	Human, Mouse, Rat
Host:	Mouse
Isotype:	IgG1
Clonality:	Monoclonal
Immunogen:	Full length human recombinant protein of human CHEK2 (NP_009125) produced in HEK293T cell.
Formulation:	Stored in PBS (pH 7.4) containing 0.05% sodium azide and up to 5% trehalose
Concentration:	0.5 mg/ml
Conjugation:	Unconjugated
Storage:	Store at -20°C. Avoid repeat freeze/thaw cycles.
Stability:	Stable for 12 months from date of receipt.
Gene Name:	checkpoint kinase 2
Database Link:	NP_009125 Entrez Gene 50883 Mouse Entrez Gene 114212 Rat Entrez Gene 11200 Human O96017
Synonyms:	CDS1; CHK2; hCds1; HuCds1; LFS2; PP1425; RAD53
Matched ELISA Pair:	TA700006
Protein Families:	Druggable Genome, Protein Kinase, Stem cell - Pluripotency
Protein Pathways:	Cell cycle, p53 signaling pathway

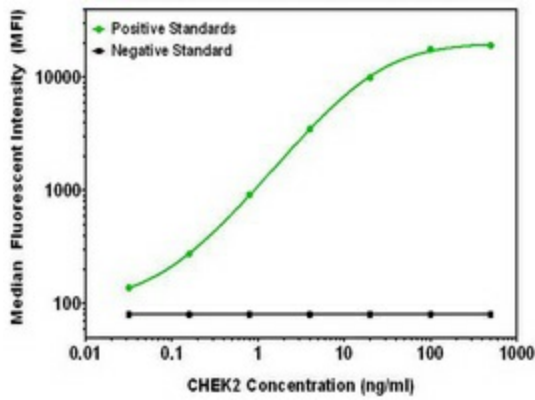


[View online »](#)

Product images:



CHEK2 ELISA with 2F4 Capture (TA600006) and 4C10 Detection ([TA700006]) Antibodies. Substrate used: Recombinant Human CHEK2 ([TP301278])



CHEK2 Luminex ELISA with 2F4 Capture (TA600006) and 4C10 Detection ([TA700006]) Antibodies. Substrate used: Recombinant Human CHEK2 ([TP301278])