

## Product datasheet for **TA592899**

### Tau (MAPT) Rabbit Monoclonal Antibody [Clone ID: OTIR11C9]

#### Product data:

Product Type:	Primary Antibodies
Clone Name:	OTIR11C9
Applications:	ELISA
Recommended Dilution:	ELISA 1:10000-1:100000
Reactivity:	Human
Host:	Rabbit
Isotype:	IgG
Clonality:	Monoclonal
Immunogen:	Synthetic acetylated peptide (the amino acid sequence is considered to be commercially sensitive) within Human Tau (NP_005901). The exact sequence is proprietary.
Formulation:	PBS (pH 7.3) containing 1% BSA, 50% glycerol and 0.02% sodium azide.
Concentration:	1 mg/ml
Purification:	Purified from mouse ascites fluids or tissue culture supernatant by affinity chromatography (protein A/G)
Conjugation:	Unconjugated
Storage:	Shipped at -20°C or with ice packs, Upon delivery store at -20°C. Dilute in PBS(pH7.3) if necessary. Stable for 12 months from date of receipt. Avoid repeated freeze-thaws.
Predicted Protein Size:	45.7 kDa
Gene Name:	microtubule associated protein tau
Database Link:	<a href="#">NP_005901</a> <a href="#">Entrez Gene 4137 Human</a> <a href="#">P10636</a>



[View online »](#)

**Background:**

This gene encodes the microtubule-associated protein tau (MAPT) whose transcript undergoes complex, regulated alternative splicing, giving rise to several mRNA species. MAPT transcripts are differentially expressed in the nervous system, depending on stage of neuronal maturation and neuron type. MAPT gene mutations have been associated with several neurodegenerative disorders such as Alzheimer's disease, Pick's disease, frontotemporal dementia, cortico-basal degeneration and progressive supranuclear palsy. [provided by RefSeq, Jul 2008]

**Synonyms:**

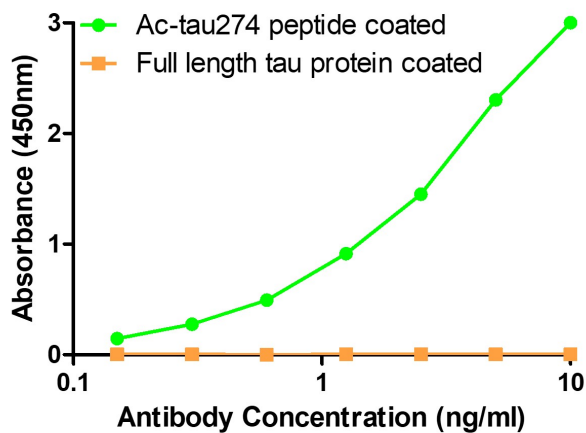
DDPAC; FTDP-17; MAPTL; MSTD; MTBT1; MTBT2; PPND; PPP1R103; TAU; tau-40

**Protein Families:**

Druggable Genome

**Protein Pathways:**

Alzheimer's disease, MAPK signaling pathway

**Product images:**

ELISA with coating antigen Ac-tau274 synthetic acetylated peptide and 11C9 Ac-tau274 antibody (TA592899). Negative control: coating Full length tau protein