

## Product datasheet for **TA592095S**

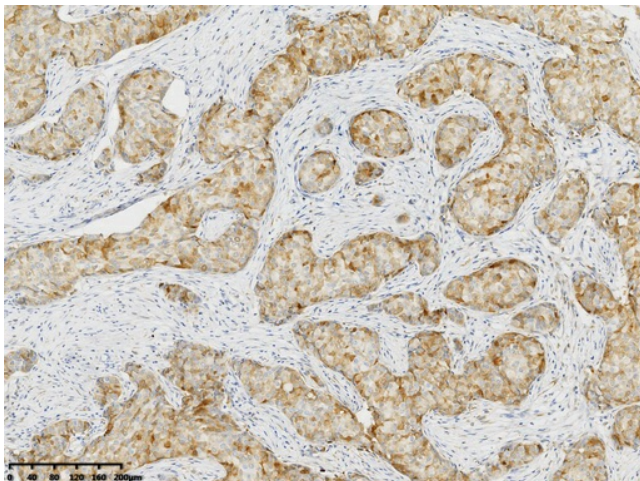
### GS(GLUL) Rabbit Monoclonal Antibody [Clone ID: OTIR1A5]

#### Product data:

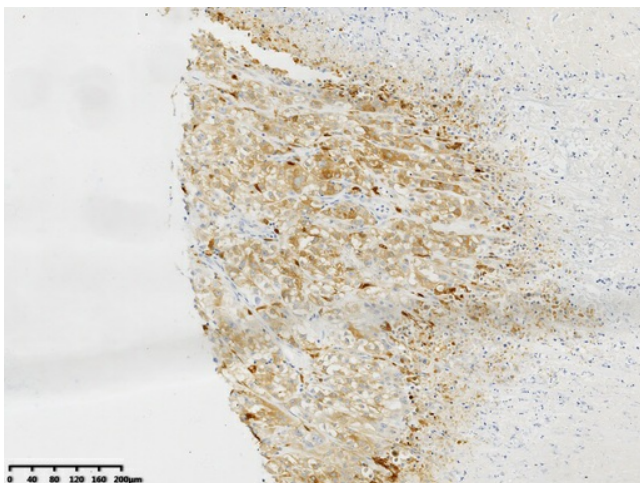
Product Type:	Primary Antibodies
Clone Name:	OTIR1A5
Applications:	IHC
Recommended Dilution:	IHC 1:1500
Host:	Rabbit
Isotype:	IgG
Clonality:	Monoclonal
Immunogen:	Synthetic peptide corresponding to the C-terminus of Human GS(GLUL) (NP_001028228) conjugated to KLH. The exact sequence is proprietary.
Formulation:	PBS (pH 7.3) containing 1% BSA, 50% glycerol and 0.02% sodium azide.
Concentration:	1 mg/ml
Purification:	Purified from mouse ascites fluids or tissue culture supernatant by affinity chromatography (protein A/G)
Conjugation:	Unconjugated
Storage:	Shipped at -20°C or with ice packs, Upon delivery store at -20°C. Dilute in PBS(pH7.3) if necessary. Stable for 12 months from date of receipt. Avoid repeated freeze-thaws.



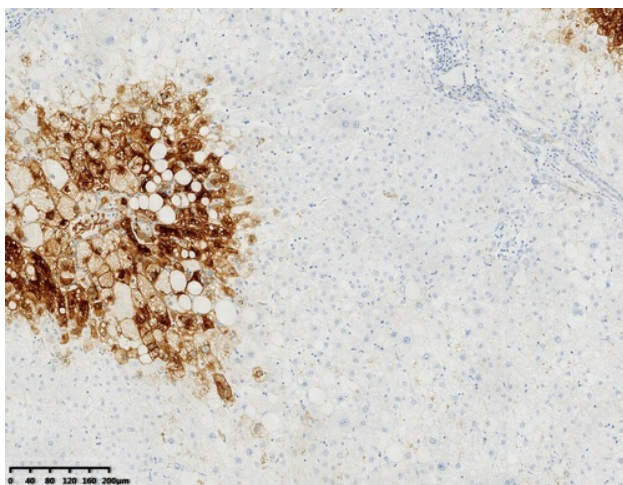
[View online »](#)

**Product images:**

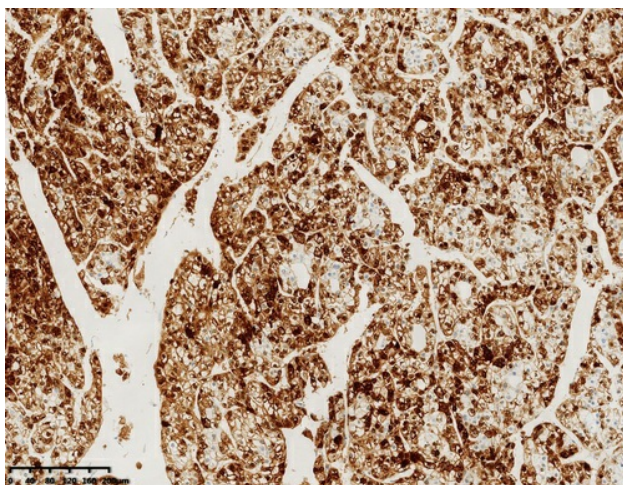
Immunohistochemical staining of paraffin-embedded Adenocarcinoma of Human breast tissue using anti-GS (GLUL) rabbit monoclonal antibody. (Heat-induced epitope retrieval by 1mM EDTA in 10mM Tris buffer (pH8.0) at 120°C for 3 min, [TA592095]) (1:1500)



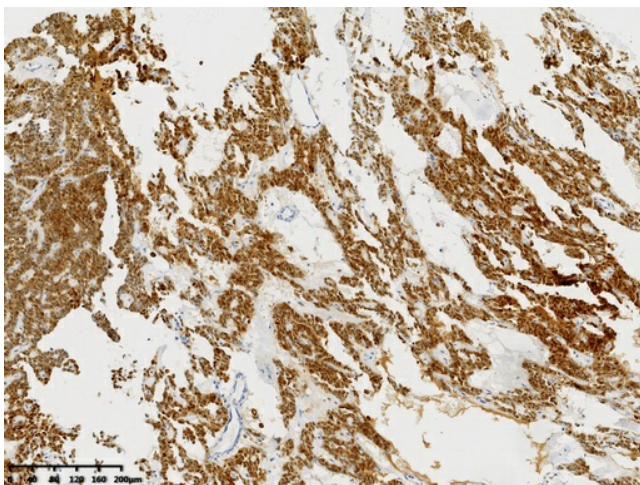
Immunohistochemical staining of paraffin-embedded Carcinoma of Human kidney tissue using anti-GS (GLUL) rabbit monoclonal antibody. (Heat-induced epitope retrieval by 1mM EDTA in 10mM Tris buffer (pH8.0) at 120°C for 3 min, [TA592095]) (1:1500)



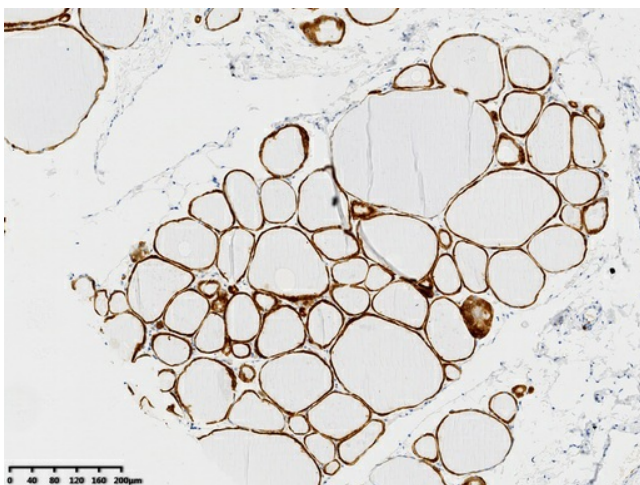
Immunohistochemical staining of paraffin-embedded Human liver tissue within the normal limits using anti-GS (GLUL) rabbit monoclonal antibody. (Heat-induced epitope retrieval by 1mM EDTA in 10mM Tris buffer (pH8.0) at 120°C for 3 min, [TA592095]) (1:1500)



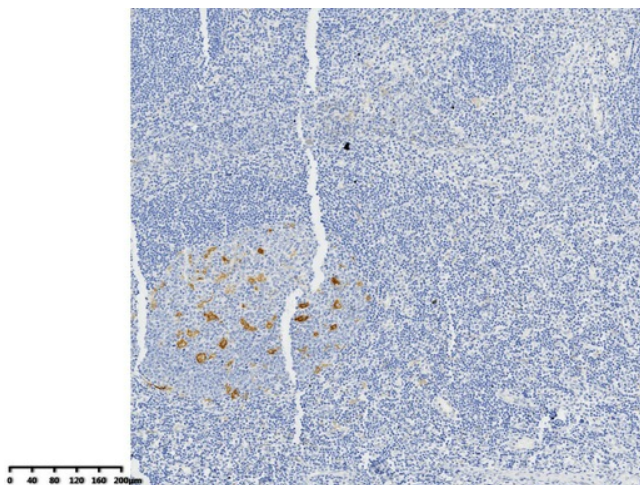
Immunohistochemical staining of paraffin-embedded Carcinoma of Human liver tissue using anti-GS (GLUL) rabbit monoclonal antibody. (Heat-induced epitope retrieval by 1mM EDTA in 10mM Tris buffer (pH8.0) at 120°C for 3 min, [TA592095]) (1:1500)



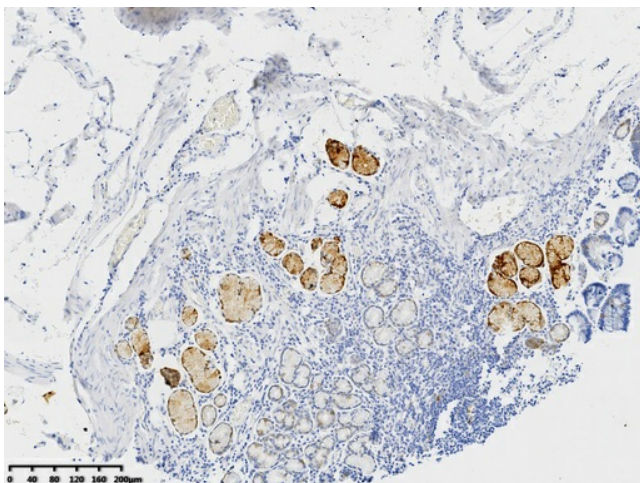
Immunohistochemical staining of paraffin-embedded Carcinoma of Human pancreas tissue using anti-GS (GLUL) rabbit monoclonal antibody. (Heat-induced epitope retrieval by 1mM EDTA in 10mM Tris buffer (pH8.0) at 120°C for 3 min, [TA592095]) (1:1500)



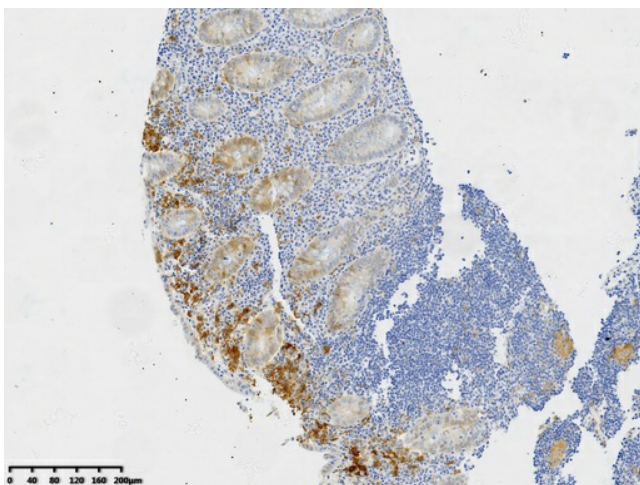
Immunohistochemical staining of paraffin-embedded Human thyroid tissue within the normal limits using anti-GS (GLUL) rabbit monoclonal antibody. (Heat-induced epitope retrieval by 1mM EDTA in 10mM Tris buffer (pH8.0) at 120°C for 3 min, [TA592095]) (1:1500)



Immunohistochemical staining of paraffin-embedded Human tonsil within the normal limits using anti-GS (GLUL) rabbit monoclonal antibody. (Heat-induced epitope retrieval by 1mM EDTA in 10mM Tris buffer (pH8.0) at 120°C for 3 min, [TA592052]) (1:1500)



Immunohistochemical staining of paraffin-embedded Human gastric tissue within the normal limits using anti-GS (GLUL) rabbit monoclonal antibody. (Heat-induced epitope retrieval by 1mM EDTA in 10mM Tris buffer (pH8.0) at 120°C for 3 min, [TA592095]) (1:1500)



Immunohistochemical staining of paraffin-embedded Human appendix tissue within the normal limits using anti-GS (GLUL) rabbit monoclonal antibody. (Heat-induced epitope retrieval by 1mM EDTA in 10mM Tris buffer (pH8.0) at 120°C for 3 min, [TA592095]) (1:1500)