

Product datasheet for **TA590782**

NAT1 Rabbit Polyclonal Antibody

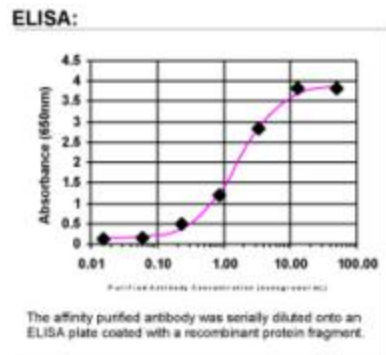
Product data:

Product Type:	Primary Antibodies
Applications:	ELISA, IHC, WB
Recommended Dilution:	WB 1:5000~20000, IHC 1:150,ELISA 1:100-1:2000
Reactivity:	Human, Rat, Monkey, Mouse
Host:	Rabbit
Isotype:	IgG
Clonality:	Polyclonal
Immunogen:	DNA immunization. This antibody is specific for the Middle Region of the target protein.
Formulation:	20 mM Potassium Phosphate, 150 mM Sodium Chloride, pH 7.0
Concentration:	0.8mg/ml
Purification:	Purified from mouse ascites fluids or tissue culture supernatant by affinity chromatography (protein A/G)
Conjugation:	Unconjugated
Storage:	Store at -20°C as received.
Stability:	Stable for 12 months from date of receipt.
Gene Name:	N-acetyltransferase 1
Database Link:	NP_000653 Entrez Gene 17960 Mouse Entrez Gene 116631 Rat Entrez Gene 704019 Monkey Entrez Gene 9 Human P18440
Synonyms:	AAC1; MNAT; NAT-1; NATI
Note:	This antibody was generated by SDIX's Genomic Antibody Technology® (GAT). Learn about GAT
Protein Pathways:	Caffeine metabolism, Drug metabolism - other enzymes, Metabolic pathways

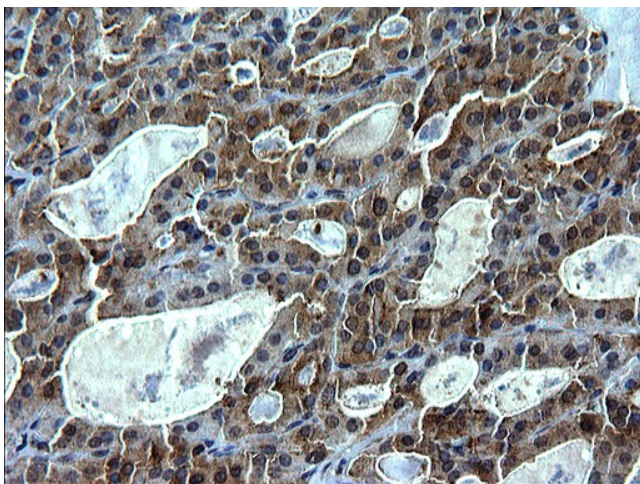


[View online »](#)

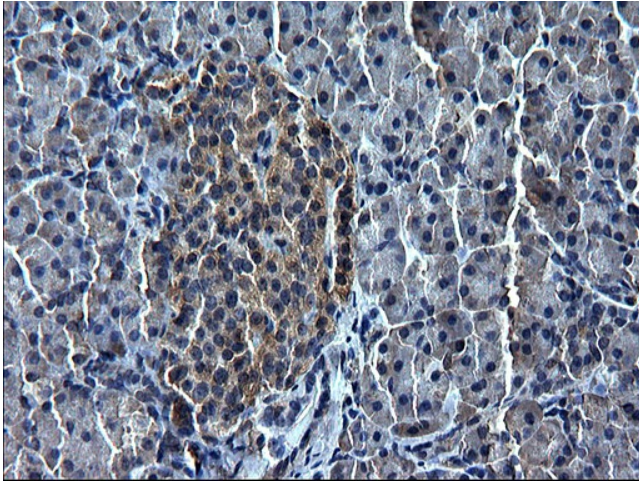
Product images:



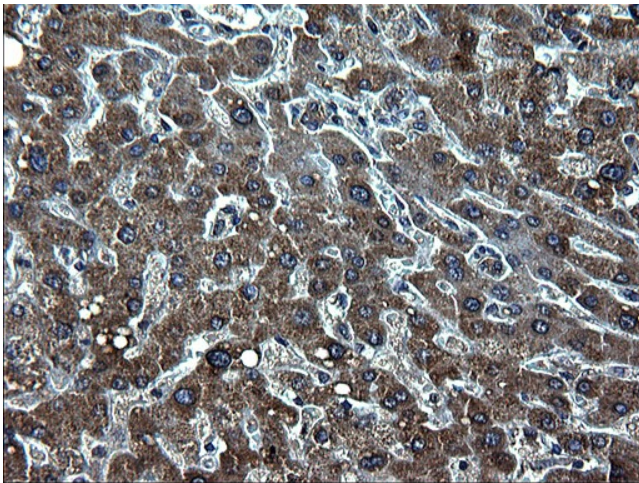
ELISA: NAT1 Antibody



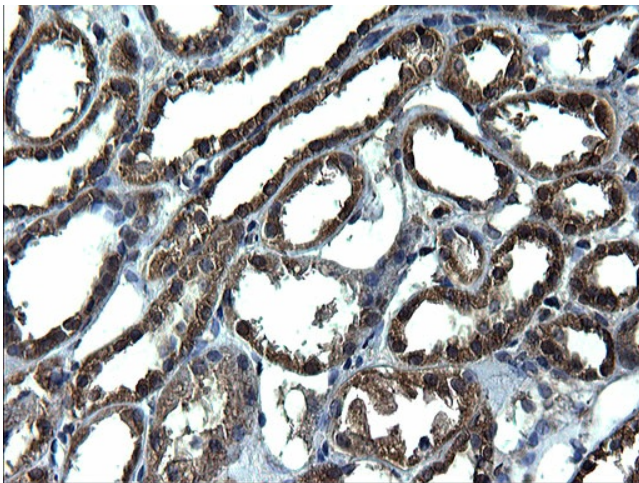
Immunohistochemical staining of paraffin-embedded Carcinoma of Human thyroid tissue using anti-NAT1 Rabbit Polyclonal antibody. (TA590782)



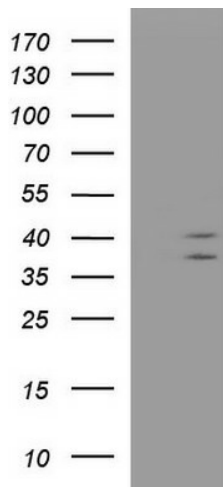
Immunohistochemical staining of paraffin-embedded Human pancreas tissue using anti-NAT1 Rabbit Polyclonal antibody. (TA590782)



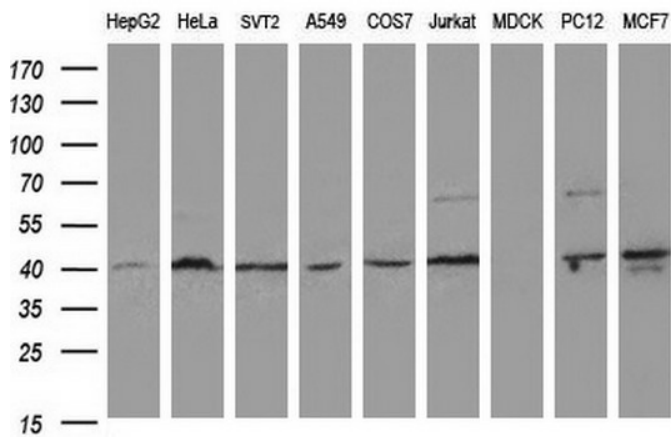
Immunohistochemical staining of paraffin-embedded Human liver tissue using anti-NAT1 Rabbit Polyclonal antibody. (TA590782)



Immunohistochemical staining of paraffin-embedded Human Kidney tissue using anti-NAT1 Rabbit Polyclonal antibody. (TA590782)



HEK293T cells were transfected with the pCMV6-ENTRY control (Left lane) or pCMV6-ENTRY NAT1 ([RC221042], Right lane) cDNA for 48 hrs and lysed. Equivalent amounts of cell lysates (5 ug per lane) were separated by SDS-PAGE and immunoblotted with anti-NAT1. Positive lysates [LY424588] (100ug) and [LC424588] (20ug) can be purchased separately from OriGene.



Western blot analysis of extracts (35ug) from 9 different cell lines by using anti-NAT1 polyclonal antibody (HepG2: human; HeLa: human; SVT2: mouse; A549: human; COS7: monkey; Jurkat: human; MDCK: canine; PC12: rat; MCF7: human).