

Product datasheet for **TA590105**

NSE (ENO2) Rabbit Polyclonal Antibody

Product data:

Product Type:	Primary Antibodies
Applications:	ELISA, WB
Recommended Dilution:	WB 1:20000, ELISA 1:100-1:2000
Reactivity:	Human
Host:	Rabbit
Isotype:	IgG
Clonality:	Polyclonal
Immunogen:	DNA immunization. This antibody is specific for the N Terminus Region of the target protein.
Formulation:	20 mM Potassium Phosphate, 150 mM Sodium Chloride, pH 7.0
Concentration:	0.90292 mg/ml
Purification:	Purified from mouse ascites fluids or tissue culture supernatant by affinity chromatography (protein A/G)
Conjugation:	Unconjugated
Storage:	Store at -20°C as received.
Stability:	Stable for 12 months from date of receipt.
Gene Name:	enolase 2
Database Link:	NP_001966 Entrez Gene 2026 Human P09104
Background:	Neuron-specific enolase (NSE) is a glycolytic isoenzyme which is located in central and peripheral neurons and neuroendocrine cells. This enzyme is released into the CSF when neural tissue is injured. Neoplasms derived from neural or neuroendocrine tissue may release NSE into the blood. NSE is a useful substance that has been detected in patients with certain tumors, namely: neuroblastoma, small cell lung cancer, medullary thyroid cancer, carcinoid tumors, pancreatic endocrine tumors, and melanoma. Recombinant NSE was expressed in E.coli and purified by conventional chromatography techniques.
Synonyms:	HEL-S-279; NSE

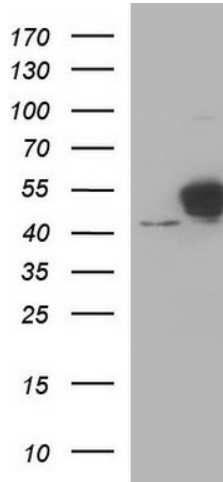


[View online »](#)

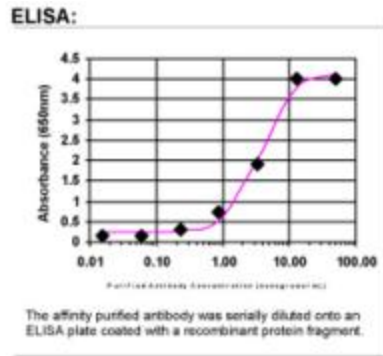
Note: This antibody was generated by SDIX's Genomic Antibody Technology® (GAT). [Learn about GAT](#)

Protein Pathways: Glycolysis / Gluconeogenesis, Metabolic pathways, RNA degradation

Product images:



HEK293T cells were transfected with the pCMV6-ENTRY control (Left lane) or pCMV6-ENTRY ENO2 ([RC201085], Right lane) cDNA for 48 hrs and lysed. Equivalent amounts of cell lysates (5 ug per lane) were separated by SDS-PAGE and immunoblotted with anti-ENO2. Positive lysates [LY400724] (100ug) and [LC400724] (20ug) can be purchased separately from OriGene.



ELISA: NSE Antibody