

## Product datasheet for **TA590104**

### Cathepsin D (CTSD) Rabbit Polyclonal Antibody

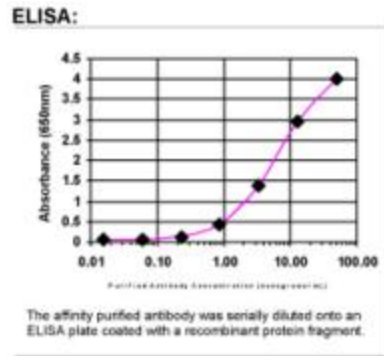
#### Product data:

Product Type:	Primary Antibodies
Applications:	ELISA, IHC, WB
Recommended Dilution:	WB 1:20000, IHC 1:150, ELISA 1:100-1:2000
Reactivity:	Human
Host:	Rabbit
Isotype:	IgG
Clonality:	Polyclonal
Immunogen:	DNA immunization. This antibody is specific for the Middle Region of the target protein.
Formulation:	20 mM Potassium Phosphate, 150 mM Sodium Chloride, pH 7.0
Concentration:	0.83mg/ml
Purification:	Purified from mouse ascites fluids or tissue culture supernatant by affinity chromatography (protein A/G)
Conjugation:	Unconjugated
Storage:	Store at -20°C as received.
Stability:	Stable for 12 months from date of receipt.
Gene Name:	cathepsin D
Database Link:	<a href="#">NP_001900</a> <a href="#">Entrez Gene 1509 Human P07339</a>
Background:	Cathepsin D has been reported to be involved in malignant tumour progression and with prognosis of various human cancers.
Synonyms:	CLN10; CPSD; HEL-S-130P
Note:	This antibody was generated by SDIX's Genomic Antibody Technology® (GAT). <a href="#">Learn about GAT</a>
Protein Families:	Druggable Genome, Protease
Protein Pathways:	Lysosome

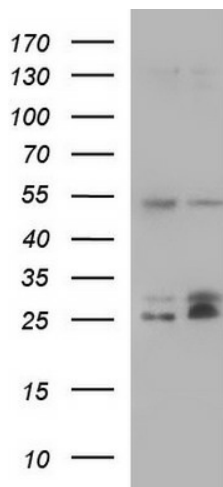


[View online »](#)

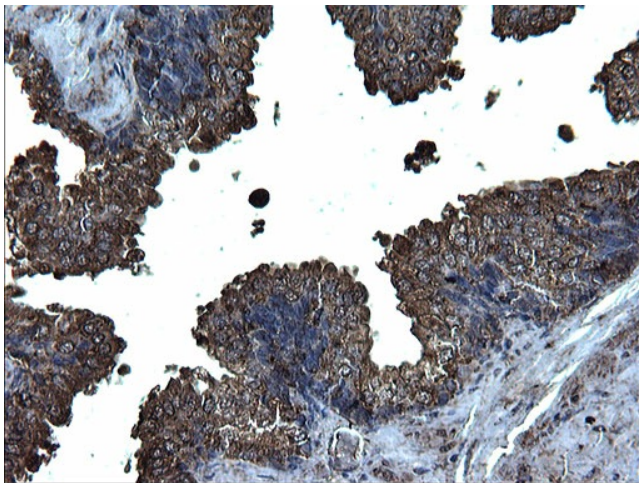
Product images:



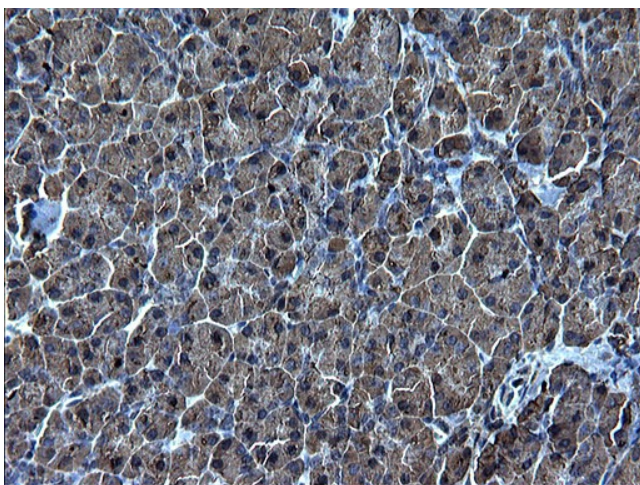
ELISA: Cathepsin D Antibody



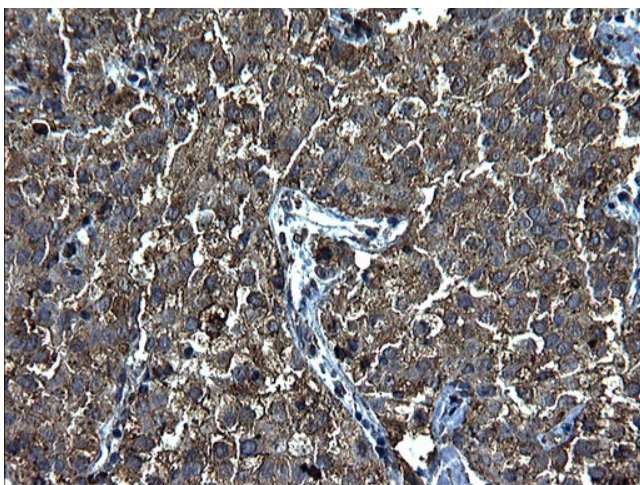
HEK293T cells were transfected with the pCMV6-ENTRY control (Cat# [PS100001], Left lane) or pCMV6-ENTRY CTSD (Cat# [RC200719], Right lane) cDNA for 48 hrs and lysed. Equivalent amounts of cell lysates (5 µg per lane) were separated by SDS-PAGE and immunoblotted with anti-CTSD (Cat# TA590104). Positive lysates [LY400712] (100µg) and [LC400712] (20µg) can be purchased separately from OriGene.



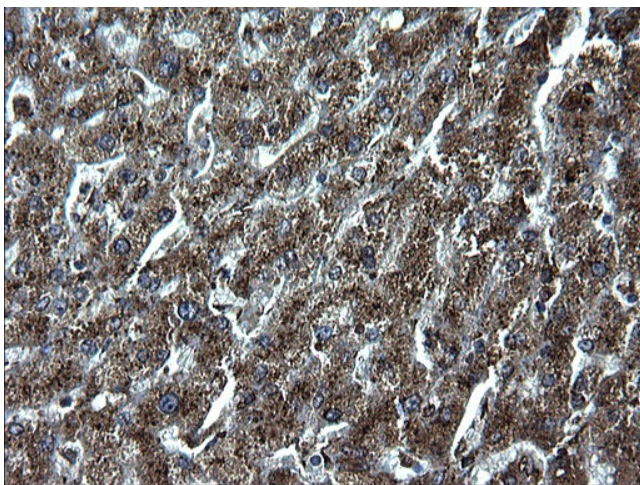
Immunohistochemical staining of paraffin-embedded Human prostate tissue using anti-CTSD Rabbit Polyclonal antibody. (TA590104)



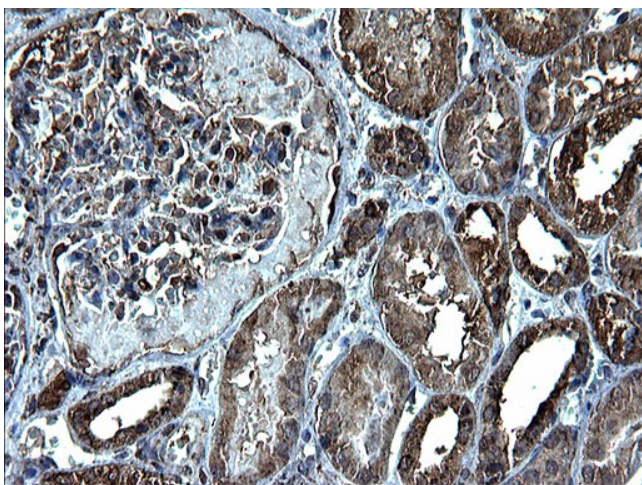
Immunohistochemical staining of paraffin-embedded Human pancreas tissue using anti-CTSD Rabbit Polyclonal antibody. (TA590104)



Immunohistochemical staining of paraffin-embedded Carcinoma of Human liver tissue using anti-CTSD Rabbit Polyclonal antibody. (TA590104)



Immunohistochemical staining of paraffin-embedded Human liver tissue using anti-CTSD Rabbit Polyclonal antibody. (TA590104)



Immunohistochemical staining of paraffin-embedded Human Kidney tissue using anti-CTSD Rabbit Polyclonal antibody. (TA590104)