

Product datasheet for **TA507178**

IKB alpha (NFKBIA) Mouse Monoclonal Antibody [Clone ID: OTI2F5]

Product data:

Product Type:	Primary Antibodies
Clone Name:	OTI2F5
Applications:	IF, IHC, WB
Recommended Dilution:	WB 1:4000, IHC 1:150, IF: 1:100
Reactivity:	Human, Mouse, Rat
Host:	Mouse
Isotype:	IgG1
Clonality:	Monoclonal
Immunogen:	Full length human recombinant protein of human NFKBIA(NP_065390) produced in HEK293T cell.
Formulation:	PBS (pH 7.3) containing 1% BSA, 50% glycerol and 0.02% sodium azide.
Concentration:	1 mg/ml
Purification:	Purified from mouse ascites fluids or tissue culture supernatant by affinity chromatography (protein A/G)
Conjugation:	Unconjugated
Storage:	Store at -20°C as received.
Stability:	Stable for 12 months from date of receipt.
Predicted Protein Size:	35.4 kDa
Gene Name:	NFKB inhibitor alpha
Database Link:	NP_065390 Entrez Gene 18035 Mouse Entrez Gene 25493 Rat Entrez Gene 4792 Human P25963
Background:	This gene encodes a member of the NF-kappa-B inhibitor family, which contain multiple ankrin repeat domains. The encoded protein interacts with REL dimers to inhibit NF-kappa-B/REL complexes which are involved in inflammatory responses. The encoded protein moves between the cytoplasm and the nucleus via a nuclear localization signal and CRM1-mediated nuclear export. Mutations in this gene have been found in ectodermal dysplasia anhidrotic with T-cell immunodeficiency autosomal dominant disease. [provided by RefSeq, Aug 2011]



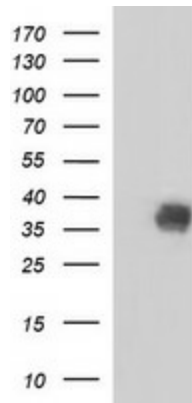
[View online »](#)

Synonyms: IKBA; MAD-3; NFKBI

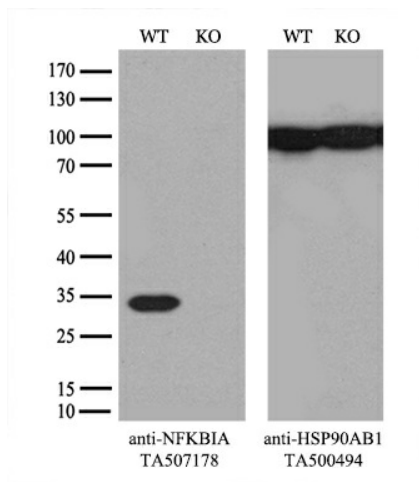
Protein Families: Druggable Genome

Protein Pathways: Adipocytokine signaling pathway, Apoptosis, B cell receptor signaling pathway, Chemokine signaling pathway, Chronic myeloid leukemia, Cytosolic DNA-sensing pathway, Epithelial cell signaling in Helicobacter pylori infection, Neurotrophin signaling pathway, NOD-like receptor signaling pathway, Pathways in cancer, Prostate cancer, RIG-I-like receptor signaling pathway, Small cell lung cancer, T cell receptor signaling pathway, Toll-like receptor signaling pathway

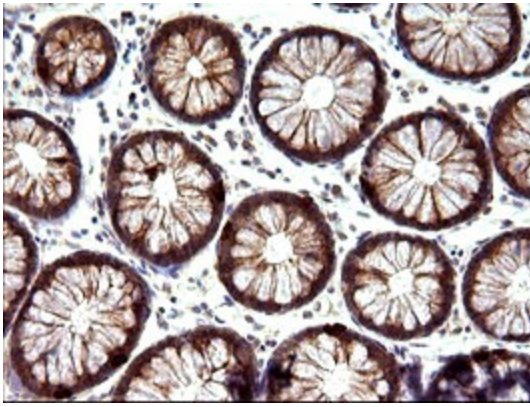
Product images:



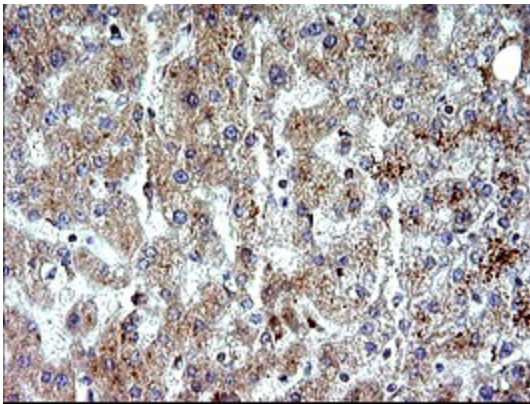
HEK293T cells were transfected with the pCMV6-ENTRY control (Cat# [PS100001], Left lane) or pCMV6-ENTRY NFKBIA (Cat# [RC200711], Right lane) cDNA for 48 hrs and lysed. Equivalent amounts of cell lysates (5 ug per lane) were separated by SDS-PAGE and immunoblotted with anti-NFKBIA (Cat# TA507178). Positive lysates [LY412432] (100ug) and [LC412432] (20ug) can be purchased separately from OriGene.



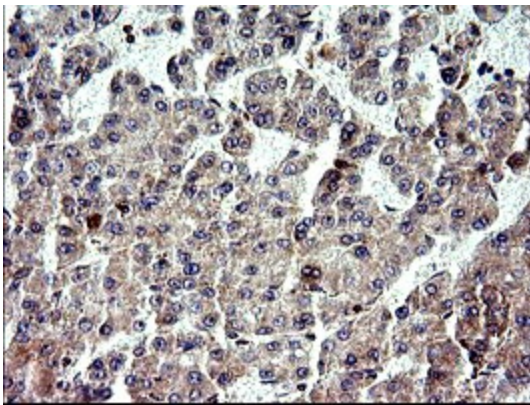
Equivalent amounts of cell lysates (10 ug per lane) of wild-type 293T cells (WT, Cat# LC810293T) and NFKBIA-Knockout 293T cells (KO, Cat# [LC842257]) were separated by SDS-PAGE and immunoblotted with anti-NFKBIA monoclonal antibody TA507178, (1:500). Then the blotted membrane was stripped and reprobed with anti-b-actin antibody ([TA811000]) as a loading control.



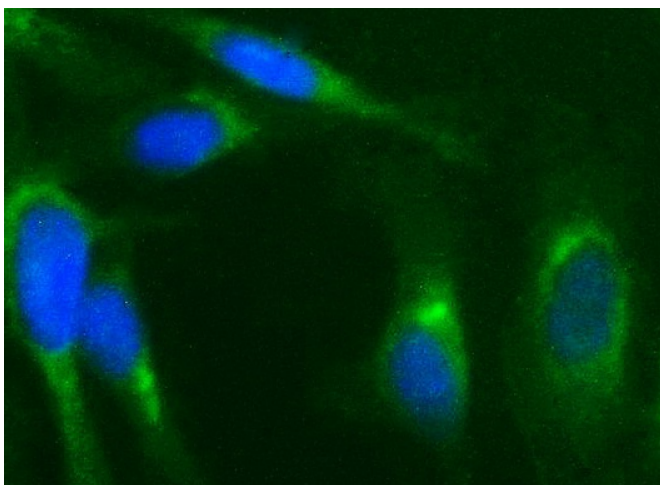
Immunohistochemical staining of paraffin-embedded Human colon tissue within the normal limits using anti-NFKBIA mouse monoclonal antibody. (Heat-induced epitope retrieval by 10mM citric buffer, pH6.0, 120°C for 3min, TA507178)



Immunohistochemical staining of paraffin-embedded Human liver tissue within the normal limits using anti-NFKBIA mouse monoclonal antibody. (Heat-induced epitope retrieval by 10mM citric buffer, pH6.0, 120°C for 3min, TA507178)



Immunohistochemical staining of paraffin-embedded Carcinoma of Human liver tissue using anti-NFKBIA mouse monoclonal antibody. (Heat-induced epitope retrieval by 10mM citric buffer, pH6.0, 120°C for 3min, TA507178)



Immunofluorescent staining of HeLa cells using anti-NFKBIA mouse monoclonal antibody (TA507178).