

## Product datasheet for **TA507042S**

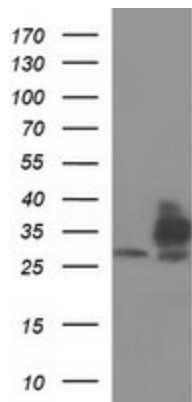
### TXNDC (TMX1) Mouse Monoclonal Antibody [Clone ID: OTI3H5]

#### Product data:

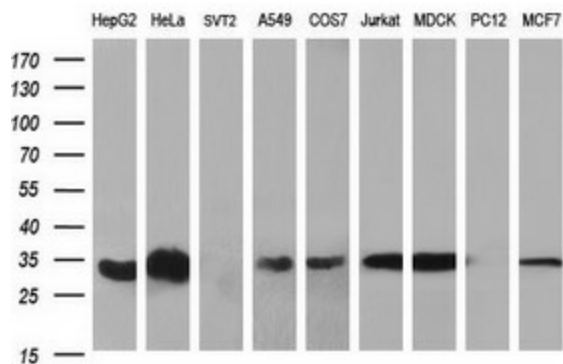
Product Type:	Primary Antibodies
Clone Name:	OTI3H5
Applications:	IF, IHC, WB
Recommended Dilution:	WB 1:2000, IHC 1:150, IF 1:100
Reactivity:	Human
Host:	Mouse
Isotype:	IgG1
Clonality:	Monoclonal
Immunogen:	Full length human recombinant protein of human TMX1(NP_110382) produced in HEK293T cell.
Formulation:	PBS (pH 7.3) containing 1% BSA, 50% glycerol and 0.02% sodium azide.
Concentration:	1 mg/ml
Purification:	Purified from mouse ascites fluids or tissue culture supernatant by affinity chromatography (protein A/G)
Conjugation:	Unconjugated
Storage:	Store at -20°C as received.
Stability:	Stable for 12 months from date of receipt.
Predicted Protein Size:	31.6 kDa
Gene Name:	thioredoxin related transmembrane protein 1
Database Link:	<a href="#">NP_110382</a> <a href="#">Entrez Gene 81542 Human</a> <a href="#">Q9H3N1</a>
Synonyms:	PDIA11; TMX; TXNDC; TXNDC1
Protein Families:	Druggable Genome, Transcription Factors, Transmembrane



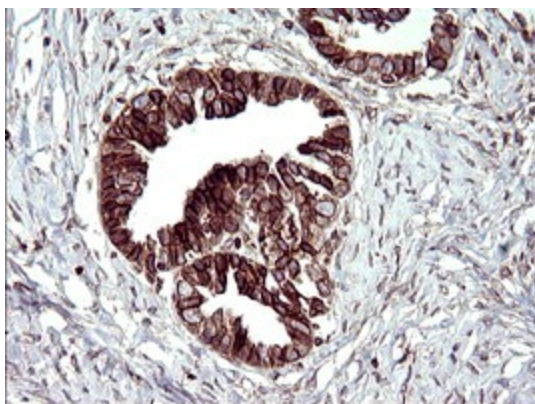
[View online »](#)

**Product images:**


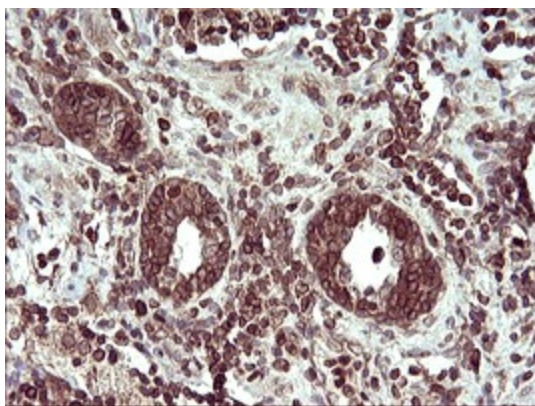
HEK293T cells were transfected with the pCMV6-ENTRY control (Cat# [PS100001], Left lane) or pCMV6-ENTRY TMX1 (Cat# [RC206187], Right lane) cDNA for 48 hrs and lysed. Equivalent amounts of cell lysates (5 ug per lane) were separated by SDS-PAGE and immunoblotted with anti-TMX1 (Cat# [TA507042]). Positive lysates [LY410692] (100ug) and [LC410692] (20ug) can be purchased separately from OriGene.



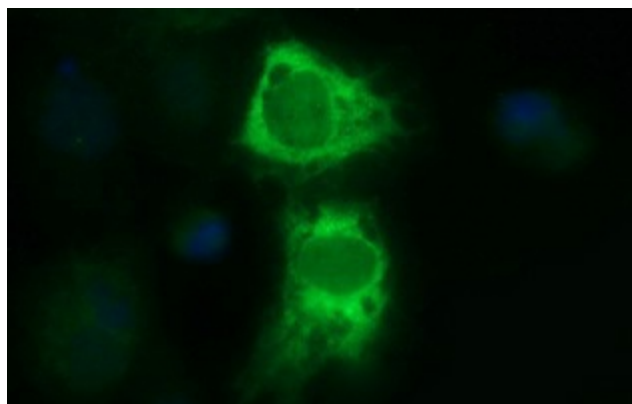
Western blot analysis of extracts (35ug) from 9 different cell lines by using anti-TMX1 monoclonal antibody (HepG2: human; HeLa: human; SVT2: mouse; A549: human; COS7: monkey; Jurkat: human; MDCK: canine; PC12: rat; MCF7: human). Dilution: 1:400



Immunohistochemical staining of paraffin-embedded Adenocarcinoma of Human ovary tissue using anti-TMX1 mouse monoclonal antibody. (Heat-induced epitope retrieval by 10mM citric buffer, pH6.0, 120°C for 3min, [TA507042])



Immunohistochemical staining of paraffin-embedded Carcinoma of Human prostate tissue using anti-TMX1 mouse monoclonal antibody. (Heat-induced epitope retrieval by 10mM citric buffer, pH6.0, 120°C for 3min, [TA507042])



Anti-TMX1 mouse monoclonal antibody ([TA507042]) immunofluorescent staining of COS7 cells transiently transfected by pCMV6-ENTRY TMX1 ([RC206187]).