

Product datasheet for **TA506623S**

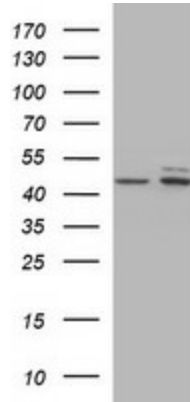
TUBB2B Mouse Monoclonal Antibody [Clone ID: OTI0C3]

Product data:

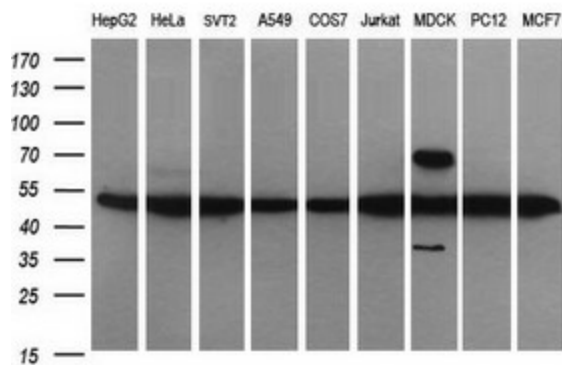
Product Type:	Primary Antibodies
Clone Name:	OTI0C3
Applications:	IF, IHC, WB
Recommended Dilution:	WB 1:400-1:2000, IF 1:100
Reactivity:	Human, Mouse, Rat
Host:	Mouse
Isotype:	IgG1
Clonality:	Monoclonal
Immunogen:	Full length human recombinant protein of human TUBB2B(NP_821080) produced in HEK293T cell.
Formulation:	PBS (pH 7.3) containing 1% BSA, 50% glycerol and 0.02% sodium azide.
Concentration:	1 mg/ml
Purification:	Purified from mouse ascites fluids or tissue culture supernatant by affinity chromatography (protein A/G)
Conjugation:	Unconjugated
Storage:	Store at -20°C as received.
Stability:	Stable for 12 months from date of receipt.
Predicted Protein Size:	49.8 kDa
Gene Name:	tubulin beta 2B class IIb
Database Link:	NP_821080 Entrez Gene 73710 Mouse Entrez Gene 291081 Rat Entrez Gene 347733 Human Q9BVA1
Synonyms:	bA506K6.1; PMGYSA
Protein Families:	Druggable Genome
Protein Pathways:	Gap junction, Pathogenic Escherichia coli infection



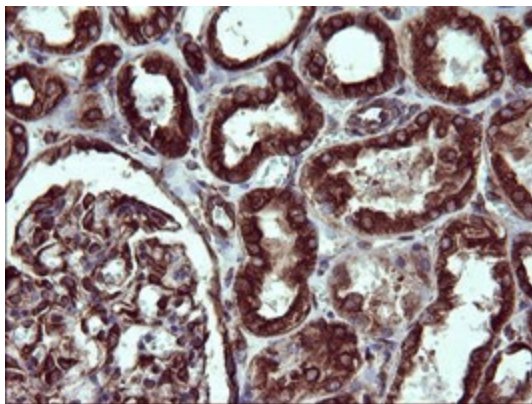
[View online »](#)

Product images:


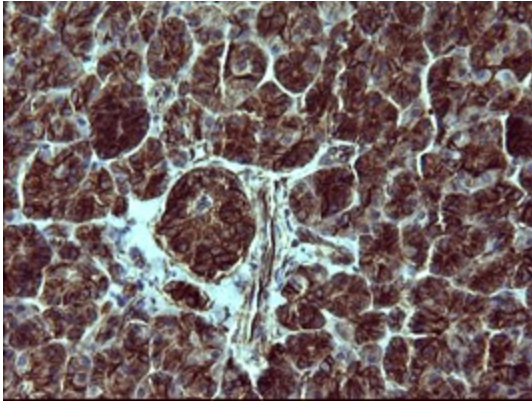
HEK293T cells were transfected with the pCMV6-ENTRY control (Left lane) or pCMV6-ENTRY TUBB2B ([RC209075], Right lane) cDNA for 48 hrs and lysed. Equivalent amounts of cell lysates (5 ug per lane) were separated by SDS-PAGE and immunoblotted with anti-TUBB2B. Positive lysates [LY405880] (100ug) and [LC405880] (20ug) can be purchased separately from OriGene.



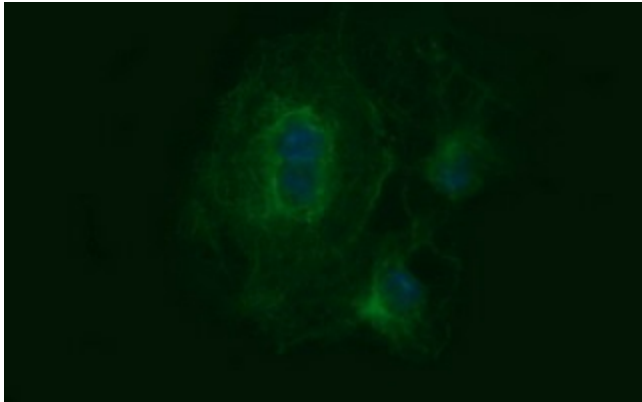
Western blot analysis of extracts (35ug) from 9 different cell lines by using anti-TUBB2B monoclonal antibody (HepG2: human; HeLa: human; SVT2: mouse; A549: human; COS7: monkey; Jurkat: human; MDCK: canine; PC12: rat; MCF7: human).



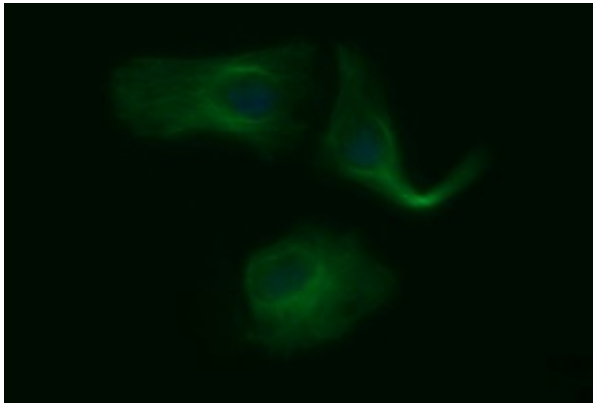
Immunohistochemical staining of paraffin-embedded Human Kidney tissue within the normal limits using anti-TUBB2B mouse monoclonal antibody. ([TA506623])



Immunohistochemical staining of paraffin-embedded Human pancreas tissue within the normal limits using anti-TUBB2B mouse monoclonal antibody. ([TA506623])



Anti-TUBB2B mouse monoclonal antibody ([TA506623]) immunofluorescent staining of COS7 cells transiently transfected by pCMV6-ENTRY TUBB2B ([RC209075]).



Immunofluorescent staining of HeLa cells using anti-TUBB2B mouse monoclonal antibody ([TA506623]).