

## Product datasheet for **TA506590**

### beta II Tubulin (TUBB2A) Mouse Monoclonal Antibody [Clone ID: OTI3E6]

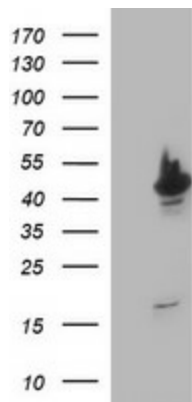
#### Product data:

|                       |  |
|-----------------------|--|
| Product Type:         | Primary Antibodies   |
| Clone Name:           | OTI3E6   |
| Applications:         | IF, IHC, WB  |
| Recommended Dilution: | WB 1:4000, IF 1:100, IHC: 1:150  |
| Reactivity:           | Human, Mouse, Rat  |
| Host:                 | Mouse  |
| Isotype:              | IgG2a  |
| Clonality:            | Monoclonal   |
| Immunogen:            | Full length human recombinant protein of human TUBB2A(NP_001060) produced in HEK293T cell.   |
| Formulation:          | PBS (pH 7.3) containing 1% BSA, 50% glycerol and 0.02% sodium azide.   |
| Concentration:        | 1 mg/ml  |
| Purification:         | Purified from mouse ascites fluids or tissue culture supernatant by affinity chromatography (protein A/G)  |
| Conjugation:          | Unconjugated   |
| Storage:              | Store at -20°C as received.  |
| Stability:            | Stable for 12 months from date of receipt.   |
| Gene Name:            | tubulin beta 2A class IIa  |
| Database Link:        | <a href="#">NP_001060</a><br><a href="#">Entrez Gene 22151 Mouse</a> <a href="#">Entrez Gene 498736 Rat</a> <a href="#">Entrez Gene 7280 Human</a><br><a href="#">Q13885</a> |
| Synonyms:             | CDCBM5; dj40E16.7; TUBB; TUBB2   |
| Protein Families:     | Druggable Genome   |
| Protein Pathways:     | Gap junction, Pathogenic Escherichia coli infection  |

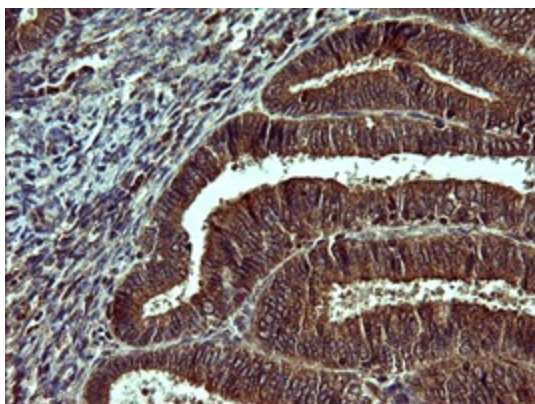


[View online »](#)

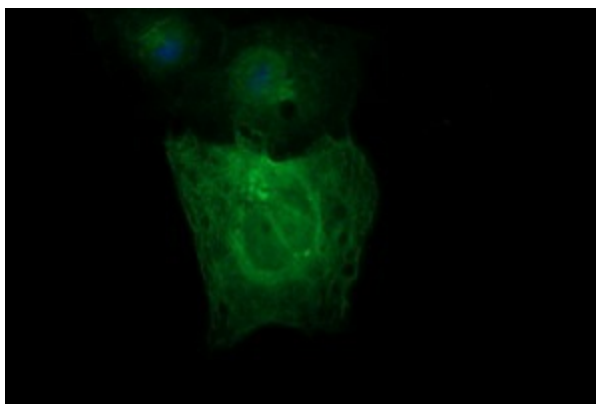
Product images:



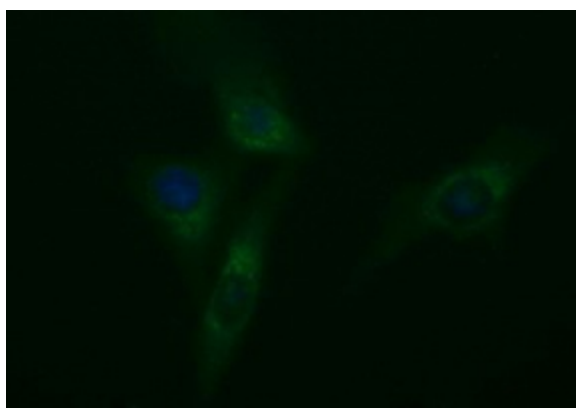
HEK293T cells were transfected with the pCMV6-ENTRY control (Cat# [PS100001], Left lane) or pCMV6-ENTRY TUBB2A (Cat# [RC205881], Right lane) cDNA for 48 hrs and lysed. Equivalent amounts of cell lysates (5 ug per lane) were separated by SDS-PAGE and immunoblotted with anti-TUBB2A (Cat# TA506590). Positive lysates [LY420706] (100ug) and [LC420706] (20ug) can be purchased separately from OriGene.



Immunohistochemical staining of paraffin-embedded Adenocarcinoma of Human endometrium tissue using anti-TUBB2A mouse monoclonal antibody. (TA506590)



Anti-TUBB2A mouse monoclonal antibody (TA506590) immunofluorescent staining of COS7 cells transiently transfected by pCMV6-ENTRY TUBB2A ([RC205881]).



Immunofluorescent staining of HeLa cells using anti-TUBB2A mouse monoclonal antibody (TA506590).