

Product datasheet for **TA506343AM**

CD64 (FCGR1A) Mouse Monoclonal Antibody (Biotin conjugated) [Clone ID: OTI3D3]

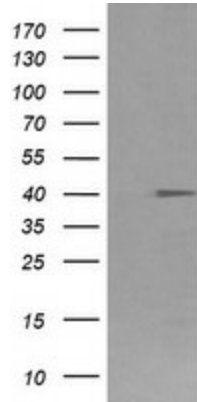
Product data:

Product Type:	Primary Antibodies
Clone Name:	OTI3D3
Applications:	FC, IF, IHC, WB
Recommended Dilution:	WB 1:4000, IHC 1:150, IF 1:100
Reactivity:	Human
Host:	Mouse
Isotype:	IgG1
Clonality:	Monoclonal
Immunogen:	Full length human recombinant protein of human FCGR1A(NP_000557) produced in HEK293T cell.
Concentration:	0.5 mg/ml
Purification:	Purified from cell culture supernatant by affinity chromatography
Conjugation:	Biotin
Storage:	Store at -20°C as received.
Stability:	Stable for 12 months from date of receipt.
Predicted Protein Size:	42.5 kDa
Gene Name:	Fc fragment of IgG receptor Ia
Database Link:	NP_000557 Entrez Gene 2209 Human P12314
Background:	This gene encodes a protein that plays an important role in the immune response. This protein is a high-affinity Fc-gamma receptor. The gene is one of three related gene family members located on chromosome 1. [provided by RefSeq, Jul 2008]
Synonyms:	CD64; CD64A; FCRI; IGFR1
Protein Families:	Transmembrane
Protein Pathways:	Fc gamma R-mediated phagocytosis, Hematopoietic cell lineage, Systemic lupus erythematosus

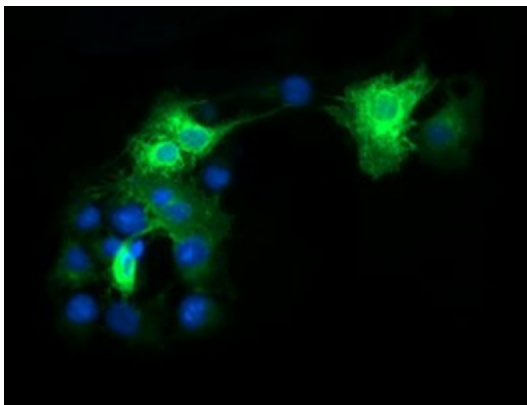


[View online »](#)

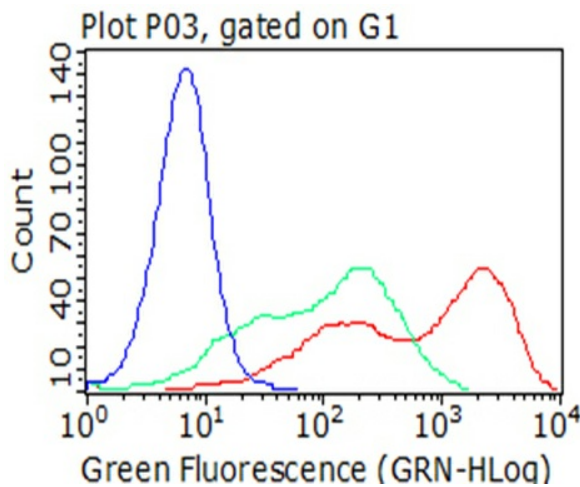
Product images:



HEK293T cells were transfected with the pCMV6-ENTRY control (Cat# [PS100001], Left lane) or pCMV6-ENTRY FCGR1A (Cat# [RC207487], Right lane) cDNA for 48 hrs and lysed. Equivalent amounts of cell lysates (5 ug per lane) were separated by SDS-PAGE and immunoblotted with anti-FCGR1A (Cat# [TA506343]). Positive lysates [LY400193] (100ug) and [LC400193] (20ug) can be purchased separately from OriGene.



Anti-FCGR1A mouse monoclonal antibody ([TA506343]) immunofluorescent staining of COS7 cells transiently transfected by pCMV6-ENTRY FCGR1A ([RC207487]).



Flow cytometric analysis of living 293T cells transfected with FCGR1A overexpression plasmid ([RC207487]), Red)/empty vector ([PS100001], Blue) using anti-FCGR1A antibody ([TA506343]). Cells incubated with a non-specific antibody (Green) were used as isotype control (1:100).