

## Product datasheet for **TA506331BM**

### CD64 (FCGR1A) Mouse Monoclonal Antibody (HRP conjugated) [Clone ID: OTI1A8]

#### Product data:

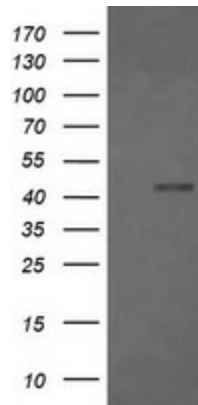
Product Type:	Primary Antibodies
Clone Name:	OTI1A8
Applications:	FC, IF, IHC, WB
Recommended Dilution:	WB 1:2000, IHC 1:150, IF 1:100
Reactivity:	Human
Host:	Mouse
Isotype:	IgG1
Clonality:	Monoclonal
Immunogen:	Full length human recombinant protein of human FCGR1A(NP_000557) produced in HEK293T cell.
Formulation:	PBS (pH 7.3) containing 1% BSA, 50% glycerol.
Concentration:	0.5 mg/ml
Purification:	Purified from mouse ascites fluids or tissue culture supernatant by affinity chromatography (protein A/G)
Conjugation:	HRP
Storage:	Store at -20°C as received.
Stability:	Stable for 12 months from date of receipt.
Predicted Protein Size:	42.5 kDa
Gene Name:	Fc fragment of IgG receptor Ia
Database Link:	<a href="#">NP_000557</a> <a href="#">Entrez Gene 2209 Human</a> <a href="#">P12314</a>
Background:	This gene encodes a protein that plays an important role in the immune response. This protein is a high-affinity Fc-gamma receptor. The gene is one of three related gene family members located on chromosome 1. [provided by RefSeq, Jul 2008]
Synonyms:	CD64; CD64A; FCRI; IGFR1
Protein Families:	Transmembrane



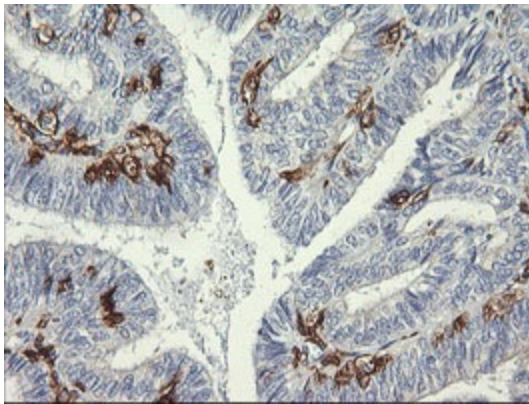
[View online »](#)

**Protein Pathways:** Fc gamma R-mediated phagocytosis, Hematopoietic cell lineage, Systemic lupus erythematosus

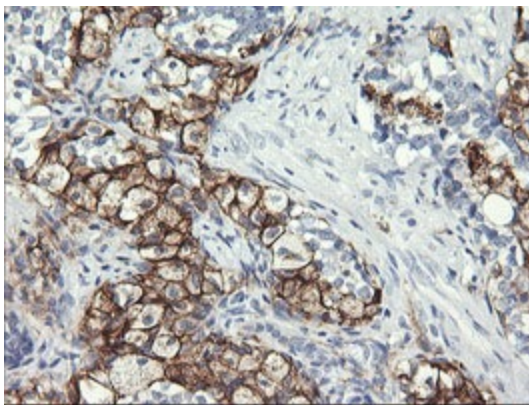
### Product images:



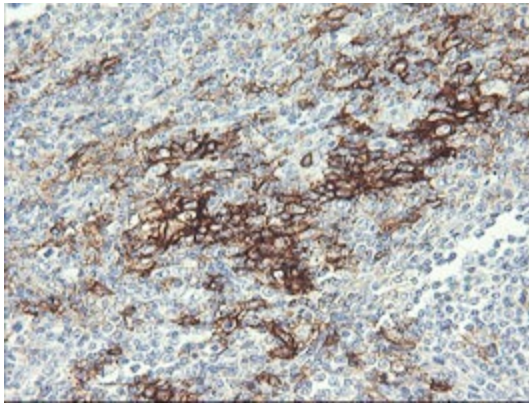
HEK293T cells were transfected with the pCMV6-ENTRY control (Left lane) or pCMV6-ENTRY FCGR1A ([RC207487], Right lane) cDNA for 48 hrs and lysed. Equivalent amounts of cell lysates (5 ug per lane) were separated by SDS-PAGE and immunoblotted with anti-FCGR1A. Positive lysates [LY400193] (100ug) and [LC400193] (20ug) can be purchased separately from OriGene.



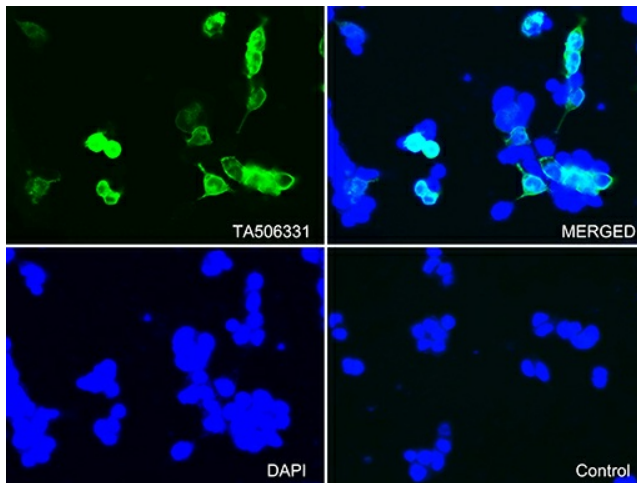
Immunohistochemical staining of paraffin-embedded Adenocarcinoma of Human endometrium tissue using anti-FCGR1A mouse monoclonal antibody. (Heat-induced epitope retrieval by 10mM citric buffer, pH6.0, 120°C for 3min, [TA506331])



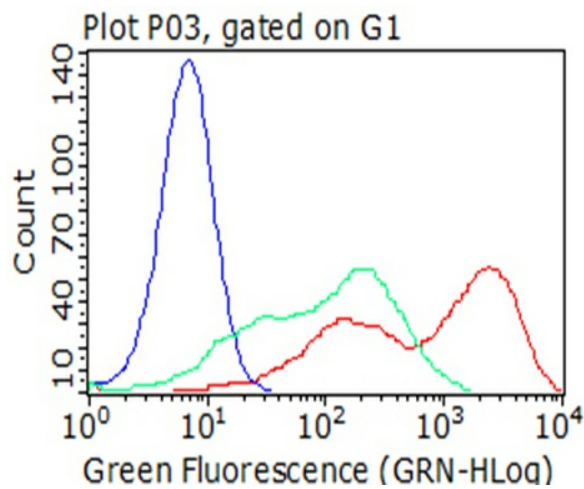
Immunohistochemical staining of paraffin-embedded Carcinoma of Human prostate tissue using anti-FCGR1A mouse monoclonal antibody. (Heat-induced epitope retrieval by 10mM citric buffer, pH6.0, 120°C for 3min, [TA506331])



Immunohistochemical staining of paraffin-embedded Human lymphoma tissue using anti-FCGR1A mouse monoclonal antibody. (Heat-induced epitope retrieval by 10mM citric buffer, pH6.0, 120°C for 3min, [TA506331])



Immunofluorescent staining of 293T cells transfected by pCMV6-ENTRY FCGR1A ([RC207487]) using anti-FCGR1A antibody ([TA506331])/green, upper left; DAPI/blue, lower left; MERGED, upper right). 293T cells transfected with empty vector served as a negative control (MERGED, lower right) (1:100).



Flow cytometric analysis of living 293T cells transfected with FCGR1A overexpression plasmid ([RC207487]), Red)/empty vector ([PS100001], Blue) using anti-FCGR1A antibody ([TA506331]). Cells incubated with a non-specific antibody (Green) were used as isotype control (1:100).