

Product datasheet for **TA506170AM**

CD105 (ENG) Mouse Monoclonal Antibody (Biotin conjugated) [Clone ID: OT18A1]

Product data:

Product Type:	Primary Antibodies
Clone Name:	OT18A1
Applications:	IF, WB
Recommended Dilution:	WB 1:200~4000, IF 1:100
Reactivity:	Human
Host:	Mouse
Isotype:	IgG2b
Clonality:	Monoclonal
Immunogen:	Full length human recombinant protein of human ENG(NP_000109) produced in HEK293T cell.
Concentration:	0.5 mg/ml
Purification:	Purified from mouse ascites fluids or tissue culture supernatant by affinity chromatography (protein A/G)
Conjugation:	Biotin
Storage:	Store at -20°C as received.
Stability:	Stable for 12 months from date of receipt.
Predicted Protein Size:	65 kDa
Gene Name:	endoglin
Database Link:	NP_000109 Entrez Gene 2022 Human P17813
Background:	This gene encodes a homodimeric transmembrane protein which is a major glycoprotein of the vascular endothelium. This protein is a component of the transforming growth factor beta receptor complex and it binds TGFB1 and TGFB3 with high affinity. Mutations in this gene cause hereditary hemorrhagic telangiectasia, also known as Osler-Rendu-Weber syndrome 1, an autosomal dominant multisystemic vascular dysplasia. Alternatively spliced transcript variants encoding different isoforms have been found for this gene. [provided by RefSeq, Sep 2008]

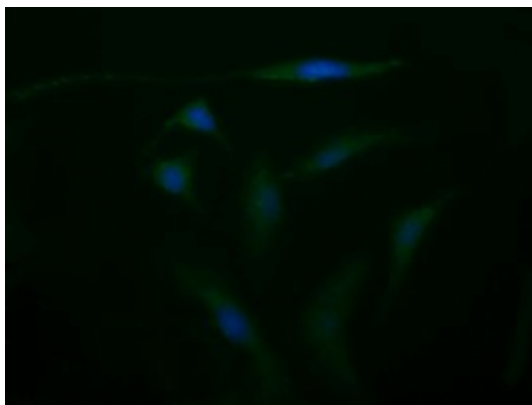


[View online »](#)

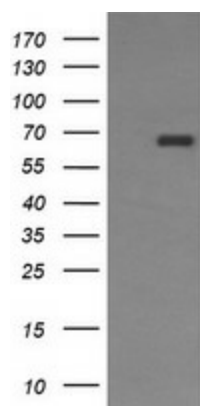
Synonyms: END; HHT1; ORW1

Protein Families: Druggable Genome, ES Cell Differentiation/IPS, Transmembrane

Product images:



Immunofluorescent staining of HeLa cells using anti-ENG mouse monoclonal antibody ([TA506170]).



HEK293T cells were transfected with the pCMV6-ENTRY control (Cat# [PS100001], Left lane) or pCMV6-ENTRY ENG (Cat# [RC221699], Right lane) cDNA for 48 hrs and lysed. Equivalent amounts of cell lysates (5 ug per lane) were separated by SDS-PAGE and immunoblotted with anti-ENG(Cat# [TA506170]). Positive lysates [LY424919] (100ug) and [LC424919] (20ug) can be purchased separately from OriGene.