

Product datasheet for **TA506071S**

SAE1 Mouse Monoclonal Antibody [Clone ID: OTI1G8]

Product data:

Product Type:	Primary Antibodies
Clone Name:	OTI1G8
Applications:	IF, IHC, WB
Recommended Dilution:	WB 1:4000, IHC 1:150, IF 1:100
Reactivity:	Human, Mouse, Rat
Host:	Mouse
Isotype:	IgG2b
Clonality:	Monoclonal
Immunogen:	Full length human recombinant protein of human SAE1(NP_005491) produced in HEK293T cell.
Formulation:	PBS (pH 7.3) containing 1% BSA, 50% glycerol and 0.02% sodium azide.
Concentration:	1 mg/ml
Purification:	Purified from mouse ascites fluids or tissue culture supernatant by affinity chromatography (protein A/G)
Conjugation:	Unconjugated
Storage:	Store at -20°C as received.
Stability:	Stable for 12 months from date of receipt.
Predicted Protein Size:	38.3 kDa
Gene Name:	SUMO1 activating enzyme subunit 1
Database Link:	NP_005491 Entrez Gene 56459 Mouse Entrez Gene 308384 Rat Entrez Gene 10055 Human Q9UBE0
Background:	Posttranslational modification of proteins by the addition of the small protein SUMO (see SUMO1; MIM 601912), or sumoylation, regulates protein structure and intracellular localization. SAE1 and UBA2 (MIM 613295) form a heterodimer that functions as a SUMO-activating enzyme for the sumoylation of proteins (Okuma et al., 1999 [PubMed 9920803]). [supplied by OMIM, Mar 2010]

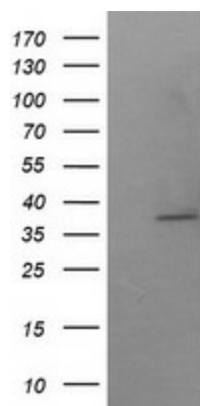


[View online »](#)

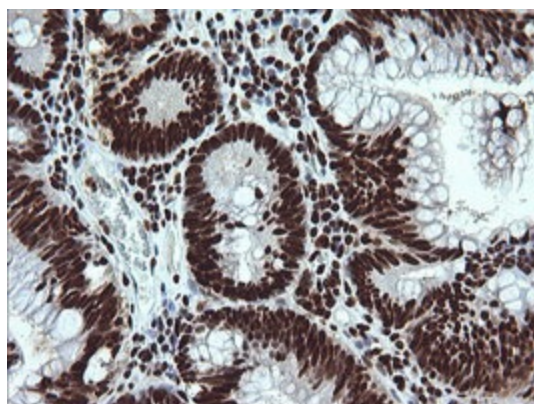
Synonyms: AOS1; HSPC140; SUA1; UBLE1A

Protein Pathways: Ubiquitin mediated proteolysis

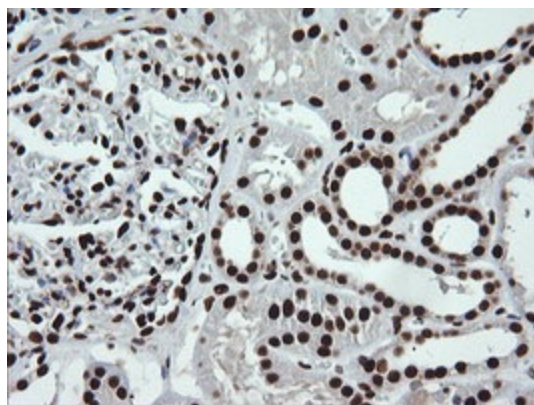
Product images:



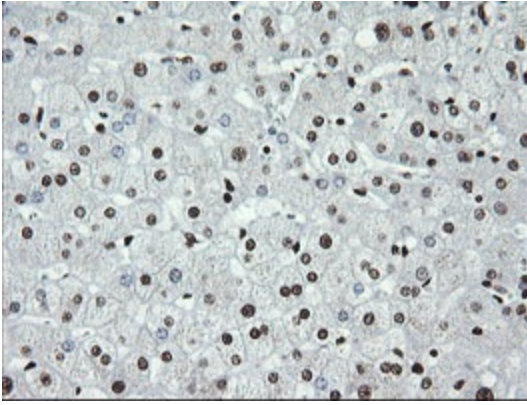
HEK293T cells were transfected with the pCMV6-ENTRY control (Left lane) or pCMV6-ENTRY SAE1 ([RC201820], Right lane) cDNA for 48 hrs and lysed. Equivalent amounts of cell lysates (5 ug per lane) were separated by SDS-PAGE and immunoblotted with anti-SAE1. Positive lysates [LY401688] (100ug) and [LC401688] (20ug) can be purchased separately from OriGene.



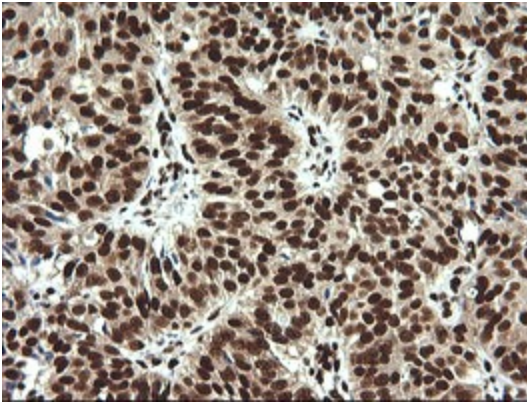
Immunohistochemical staining of paraffin-embedded Adenocarcinoma of Human colon tissue using anti-SAE1 mouse monoclonal antibody. (Heat-induced epitope retrieval by 10mM citric buffer, pH6.0, 120°C for 3min, [TA506071])



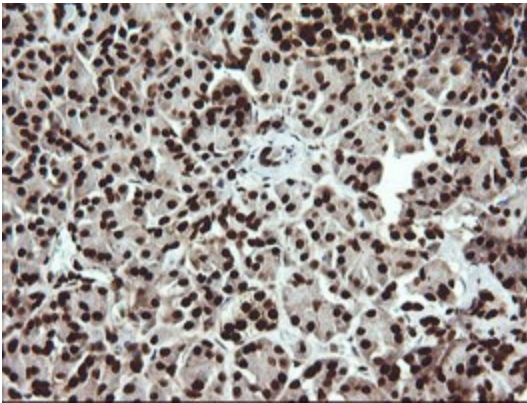
Immunohistochemical staining of paraffin-embedded Human Kidney tissue within the normal limits using anti-SAE1 mouse monoclonal antibody. (Heat-induced epitope retrieval by 10mM citric buffer, pH6.0, 120°C for 3min, [TA506071])



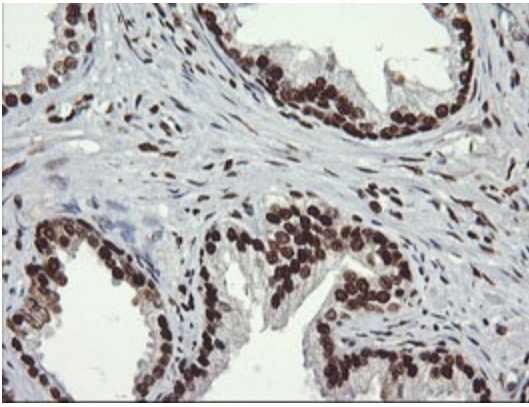
Immunohistochemical staining of paraffin-embedded Human liver tissue within the normal limits using anti-SAE1 mouse monoclonal antibody. (Heat-induced epitope retrieval by 10mM citric buffer, pH6.0, 120°C for 3min, [TA506071])



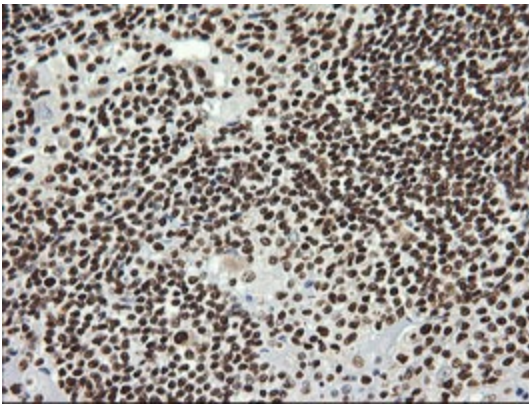
Immunohistochemical staining of paraffin-embedded Adenocarcinoma of Human ovary tissue using anti-SAE1 mouse monoclonal antibody. (Heat-induced epitope retrieval by 10mM citric buffer, pH6.0, 120°C for 3min, [TA506071])



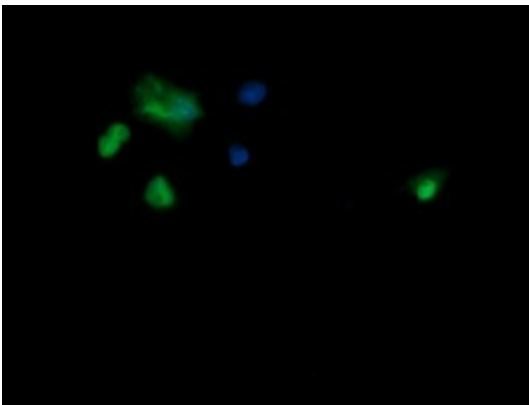
Immunohistochemical staining of paraffin-embedded Human pancreas tissue within the normal limits using anti-SAE1 mouse monoclonal antibody. (Heat-induced epitope retrieval by 10mM citric buffer, pH6.0, 120°C for 3min, [TA506071])



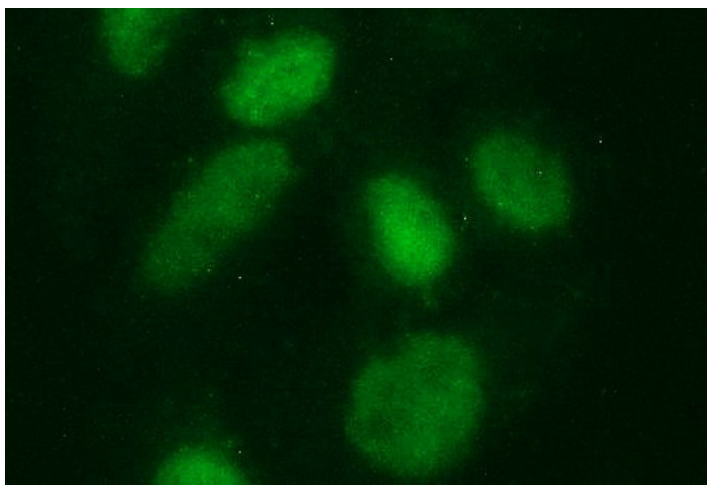
Immunohistochemical staining of paraffin-embedded Human prostate tissue within the normal limits using anti-SAE1 mouse monoclonal antibody. (Heat-induced epitope retrieval by 10mM citric buffer, pH6.0, 120°C for 3min, [TA506071])



Immunohistochemical staining of paraffin-embedded Human lymphoma tissue using anti-SAE1 mouse monoclonal antibody. (Heat-induced epitope retrieval by 10mM citric buffer, pH6.0, 120°C for 3min, [TA506071])



Anti-SAE1 mouse monoclonal antibody ([TA506071]) immunofluorescent staining of COS7 cells transiently transfected by pCMV6-ENTRY SAE1 ([RC201820]).



Immunofluorescent staining of HeLa cells using anti-SAE1 mouse monoclonal antibody ([TA506071]).