

## Product datasheet for **TA506064**

### CD3E Mouse Monoclonal Antibody [Clone ID: OTI3E10]

#### Product data:

|                         |   |
|-------------------------|---|
| Product Type:           | Primary Antibodies  |
| Clone Name:             | OTI3E10   |
| Applications:           | IF, IHC, WB   |
| Recommended Dilution:   | WB 1:200~4000, IHC 1:150, IF 1:100  |
| Reactivity:             | Human   |
| Host:                   | Mouse   |
| Isotype:                | IgG2b   |
| Clonality:              | Monoclonal  |
| Immunogen:              | Full length human recombinant protein of human CD3E(NP_000724) produced in HEK293T cell.                  |
| Formulation:            | PBS (pH 7.3) containing 1% BSA, 50% glycerol and 0.02% sodium azide.                                      |
| Concentration:          | 1 mg/ml   |
| Purification:           | Purified from mouse ascites fluids or tissue culture supernatant by affinity chromatography (protein A/G) |
| Conjugation:            | Unconjugated  |
| Storage:                | Store at -20°C as received.   |
| Stability:              | Stable for 12 months from date of receipt.  |
| Predicted Protein Size: | 20.7 kDa  |
| Gene Name:              | CD3e molecule   |
| Database Link:          | <a href="#">NP_000724</a><br><a href="#">Entrez Gene 916 Human</a><br><a href="#">P07766</a>              |



[View online »](#)

**Background:**

The protein encoded by this gene is the CD3-epsilon polypeptide, which together with CD3-gamma, -delta and -zeta, and the T-cell receptor alpha/beta and gamma/delta heterodimers, forms the T-cell receptor-CD3 complex. This complex plays an important role in coupling antigen recognition to several intracellular signal-transduction pathways. The genes encoding the epsilon, gamma and delta polypeptides are located in the same cluster on chromosome 11. The epsilon polypeptide plays an essential role in T-cell development. Defects in this gene cause immunodeficiency. This gene has also been linked to a susceptibility to type I diabetes in women. [provided by RefSeq, Jul 2008]

**Synonyms:**

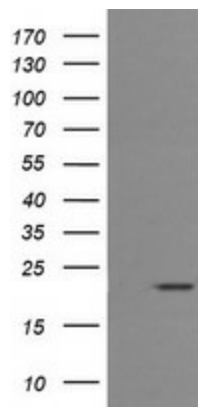
IMD18; T3E; TCRE

**Protein Families:**

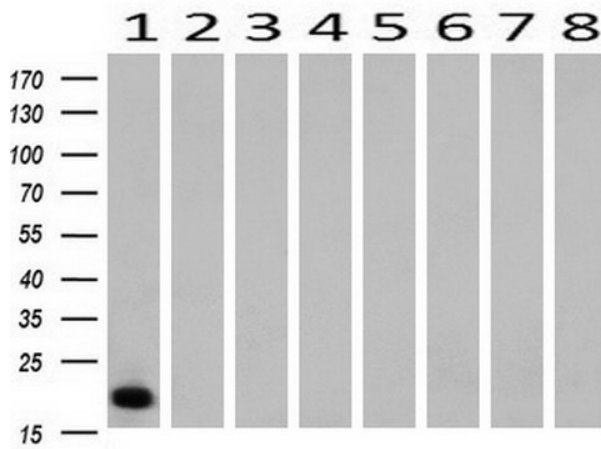
Druggable Genome, Transmembrane

**Protein Pathways:**

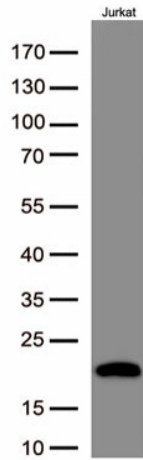
Hematopoietic cell lineage, Primary immunodeficiency, T cell receptor signaling pathway

**Product images:**


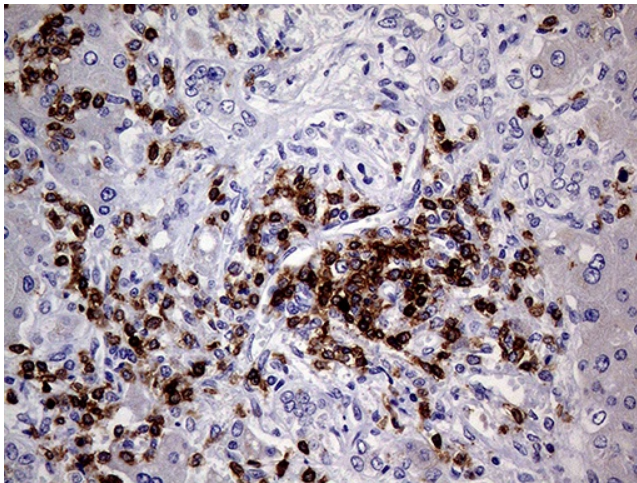
HEK293T cells were transfected with the pCMV6-ENTRY control (Cat# [PS100001], Left lane) or pCMV6-ENTRY CD3E (Cat# [RC208276], Right lane) cDNA for 48 hrs and lysed. Equivalent amounts of cell lysates (5 ug per lane) were separated by SDS-PAGE and immunoblotted with anti-CD3E (Cat# TA506064). Positive lysates [LY400242] (100ug) and [LC400242] (20ug) can be purchased separately from OriGene.



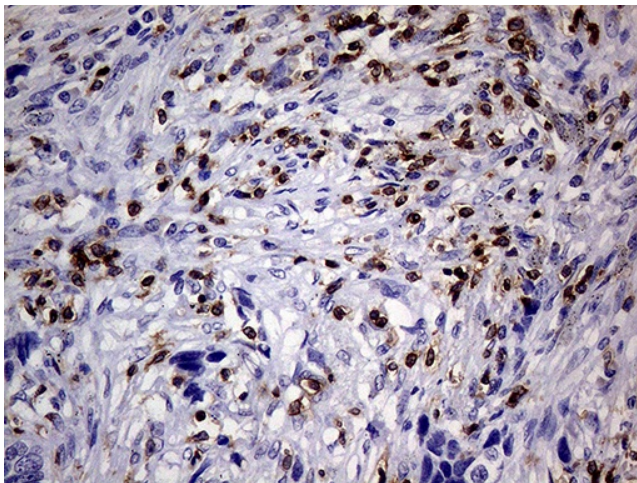
Western blot analysis of extracts (10ug) from 8 Human tissue by using anti-CD3E monoclonal antibody at 1:200 (1: Testis; 2: Uterus; 3: Breast; 4: Brain; 5: Liver; 6: Ovary; 7: Thyroid gland; 8: Colon).



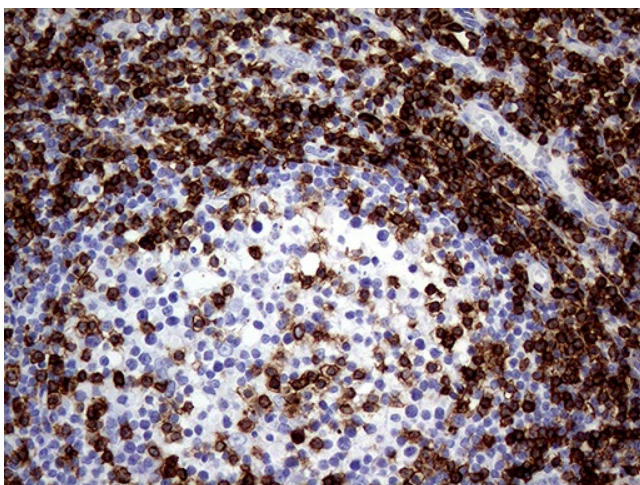
Western blot analysis of extracts(50ug) from Jurkat cell lines lysates by using anti-CD3E monoclonal antibody. (TA506064, 1:500)



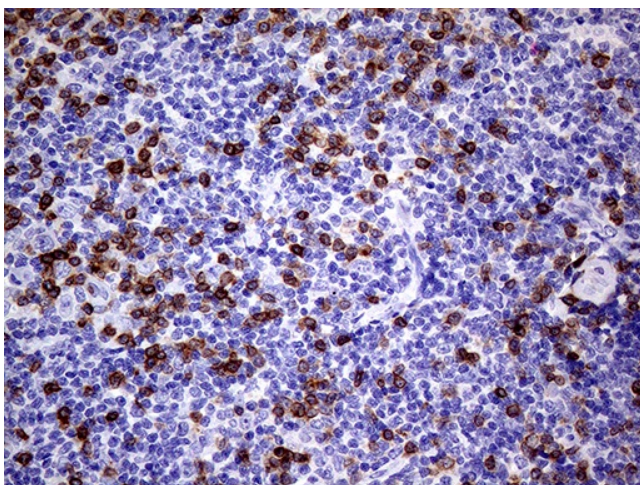
Immunohistochemical staining of paraffin-embedded Carcinoma of Human liver tissue using anti-CD3E mouse monoclonal antibody. (Heat-induced epitope retrieval by 1mM EDTA in 10mM Tris buffer (pH8.0) at 120°C for 3min, TA506064) (1:2000) (1:4000)



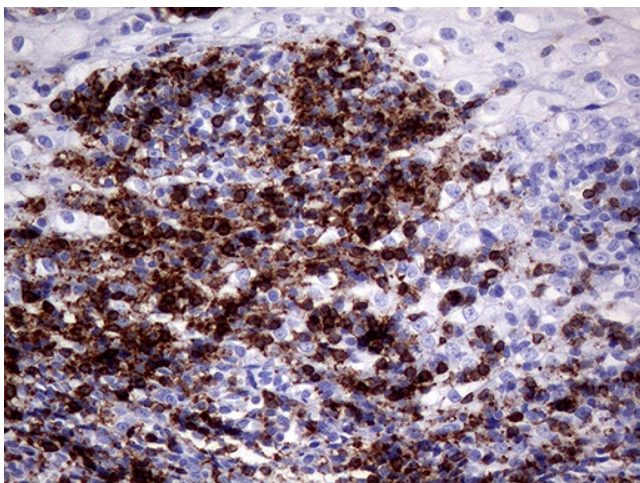
Immunohistochemical staining of paraffin-embedded Carcinoma of Human lung tissue using anti-CD3E mouse monoclonal antibody. (Heat-induced epitope retrieval by 1mM EDTA in 10mM Tris buffer (pH8.0) at 120°C for 3min, TA506064) (1:2000) (1:4000)



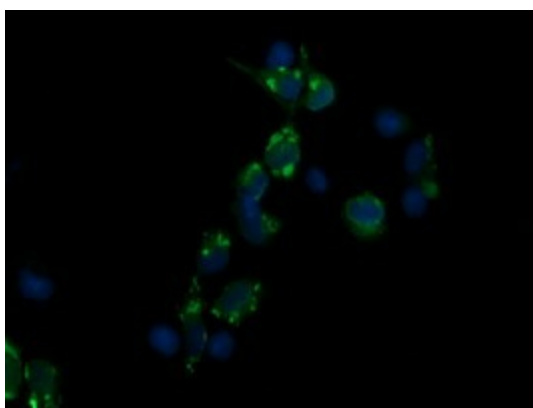
Immunohistochemical staining of paraffin-embedded Human lymph node tissue within the normal limits using anti-CD3E mouse monoclonal antibody. (Heat-induced epitope retrieval by 1mM EDTA in 10mM Tris buffer (pH8.0) at 120°C for 3min, TA506064) (1:2000) (1:4000)



Immunohistochemical staining of paraffin-embedded Human lymphoma tissue using anti-CD3E mouse monoclonal antibody. (Heat-induced epitope retrieval by 1mM EDTA in 10mM Tris buffer (pH8.0) at 120°C for 3min, TA506064) (1:2000) (1:4000)



Immunohistochemical staining of paraffin-embedded Human tonsil within the normal limits using anti-CD3E mouse monoclonal antibody. (Heat-induced epitope retrieval by 10mM citric buffer, pH6.0, 120°C for 3min, TA506064)



Anti-CD3E mouse monoclonal antibody (TA506064) immunofluorescent staining of COS7 cells transiently transfected by pCMV6-ENTRY CD3E ([RC208276]).