

Product datasheet for **TA506026**

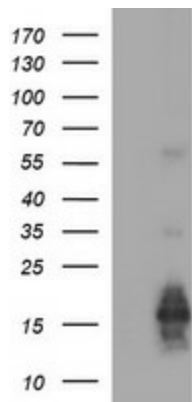
MelanA (MLANA) Mouse Monoclonal Antibody [Clone ID: OTI2G2]

Product data:

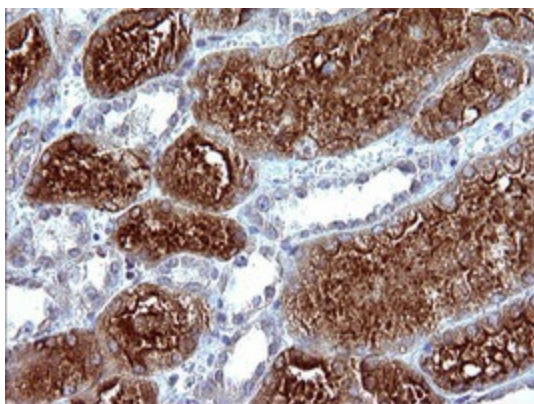
Product Type:	Primary Antibodies
Clone Name:	OTI2G2
Applications:	IF, IHC, WB
Recommended Dilution:	WB 1:4000, IHC 1:150, IF 1:100
Reactivity:	Human
Host:	Mouse
Isotype:	IgG1
Clonality:	Monoclonal
Immunogen:	Full length human recombinant protein of human MLANA(NP_005502) produced in HEK293T cell.
Formulation:	PBS (pH 7.3) containing 1% BSA, 50% glycerol and 0.02% sodium azide.
Concentration:	1 mg/ml
Purification:	Purified from mouse ascites fluids or tissue culture supernatant by affinity chromatography (protein A/G)
Conjugation:	Unconjugated
Storage:	Store at -20°C as received.
Stability:	Stable for 12 months from date of receipt.
Predicted Protein Size:	13 kDa
Gene Name:	melan-A
Database Link:	NP_005502 Entrez Gene 2315 Human Q16655
Synonyms:	MART-1; MART1
Protein Families:	Transmembrane



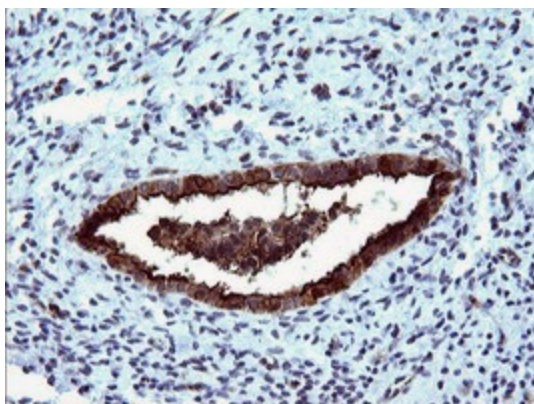
[View online »](#)

Product images:


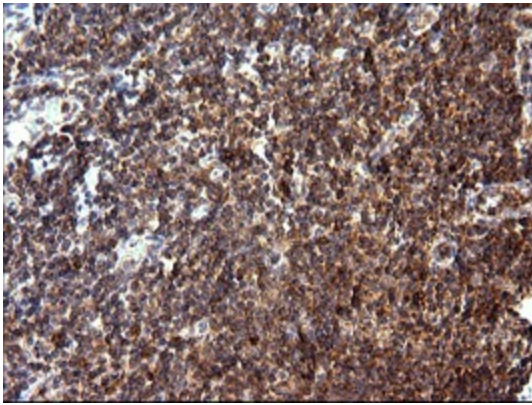
HEK293T cells were transfected with the pCMV6-ENTRY control (Left lane) or pCMV6-ENTRY MLANA ([RC204190], Right lane) cDNA for 48 hrs and lysed. Equivalent amounts of cell lysates (5 ug per lane) were separated by SDS-PAGE and immunoblotted with anti-MLANA. Positive lysates [LY417261] (100ug) and [LC417261] (20ug) can be purchased separately from OriGene.



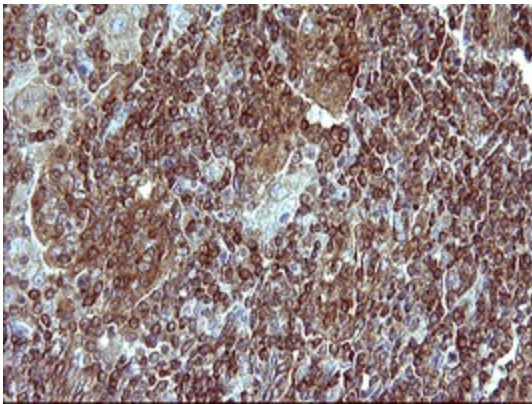
Immunohistochemical staining of paraffin-embedded Human Kidney tissue within the normal limits using anti-MLANA mouse monoclonal antibody. (Heat-induced epitope retrieval by 10mM citric buffer, pH6.0, 120°C for 3min, TA506026)



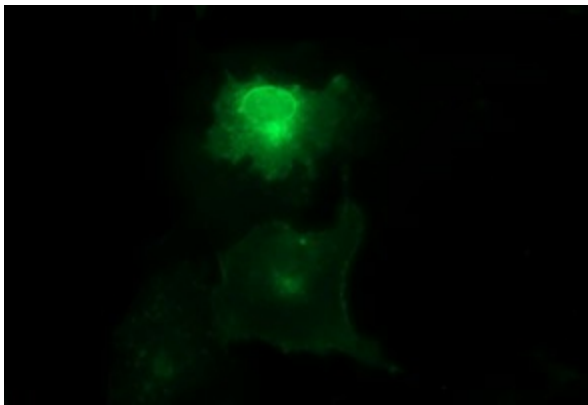
Immunohistochemical staining of paraffin-embedded Human endometrium tissue within the normal limits using anti-MLANA mouse monoclonal antibody. (Heat-induced epitope retrieval by 10mM citric buffer, pH6.0, 120°C for 3min, TA506026)



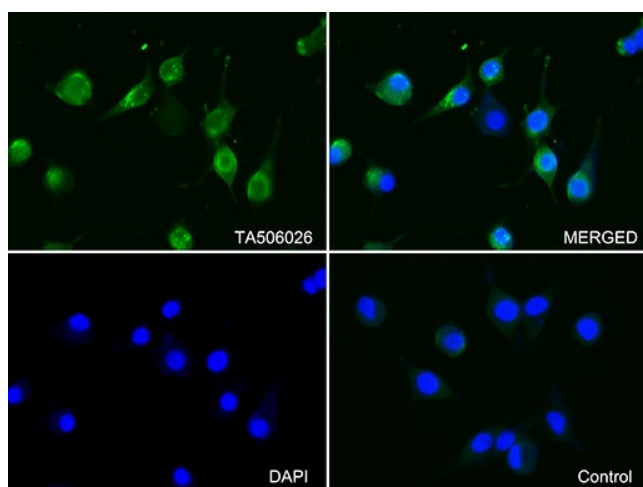
Immunohistochemical staining of paraffin-embedded Human lymph node tissue within the normal limits using anti-MLANA mouse monoclonal antibody. (Heat-induced epitope retrieval by 10mM citric buffer, pH6.0, 120°C for 3min, TA506026)



Immunohistochemical staining of paraffin-embedded Human lymphoma tissue using anti-MLANA mouse monoclonal antibody. (Heat-induced epitope retrieval by 10mM citric buffer, pH6.0, 120°C for 3min, TA506026)



Anti-MLANA mouse monoclonal antibody (TA506026) immunofluorescent staining of COS7 cells transiently transfected by pCMV6-ENTRY MLANA ([RC204190]).



Immunofluorescent staining of SK-MEL-5 cells using anti-MLANA antibody (TA506026/green, upper left; DAPI/blue, lower left; MERGED, upper right) or Isotype control (MERGED, lower right) (1:100).