

Product datasheet for **TA505897BM**

COPS6 Mouse Monoclonal Antibody (HRP conjugated) [Clone ID: OTI4E7]

Product data:

Product Type:	Primary Antibodies
Clone Name:	OTI4E7
Applications:	IF, IHC, WB
Recommended Dilution:	WB 1:2000, IHC 1:150, IF 1:100
Reactivity:	Human, Mouse, Rat
Host:	Mouse
Isotype:	IgG2a
Clonality:	Monoclonal
Immunogen:	Human recombinant protein fragment corresponding to amino acids 58-327 of human COPS6(NP_006824) produced in E.coli.
Formulation:	PBS (pH 7.4) containing 1% BSA, 50% glycerol.
Concentration:	0.5 mg/ml
Purification:	Purified from mouse ascites fluids or tissue culture supernatant by affinity chromatography (protein A/G)
Conjugation:	HRP
Storage:	Store at -20°C as received.
Stability:	Stable for 12 months from date of receipt.
Predicted Protein Size:	36 kDa
Gene Name:	COP9 signalosome subunit 6
Database Link:	NP_006824 Entrez Gene 26893 Mouse Entrez Gene 304343 Rat Entrez Gene 10980 Human Q7L5N1



[View online »](#)

Background:

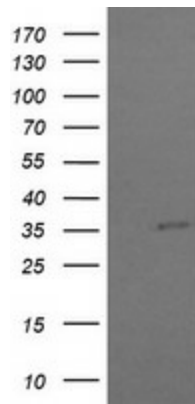
The protein encoded by this gene is one of the eight subunits of COP9 signalosome, a highly conserved protein complex that functions as an important regulator in multiple signaling pathways. The structure and function of COP9 signalosome is similar to that of the 19S regulatory particle of 26S proteasome. COP9 signalosome has been shown to interact with SCF-type E3 ubiquitin ligases and act as a positive regulator of E3 ubiquitin ligases. This protein belongs to translation initiation factor 3 (eIF3) superfamily. It is involved in the regulation of cell cycle and likely to be a cellular cofactor for HIV-1 accessory gene product Vpr. [provided by RefSeq, Jul 2008]

Synonyms:

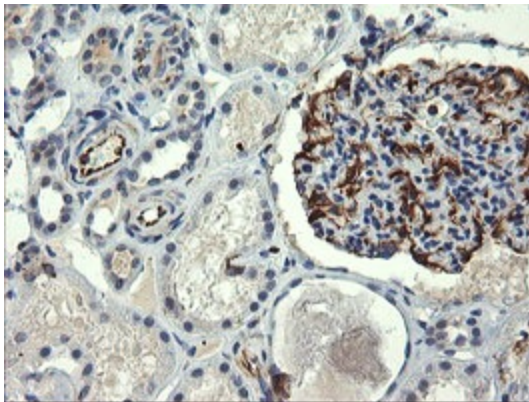
CSN6; MOV34-34KD

Protein Families:

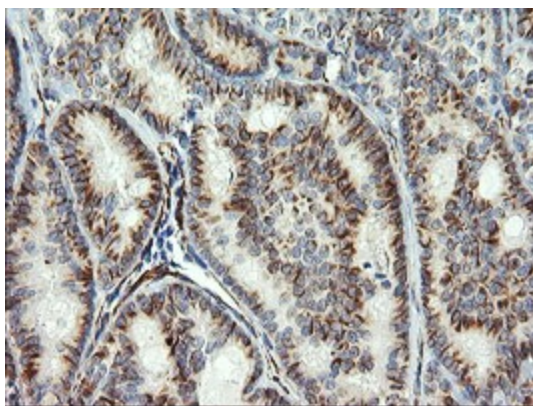
Druggable Genome, Stem cell - Pluripotency

Product images:


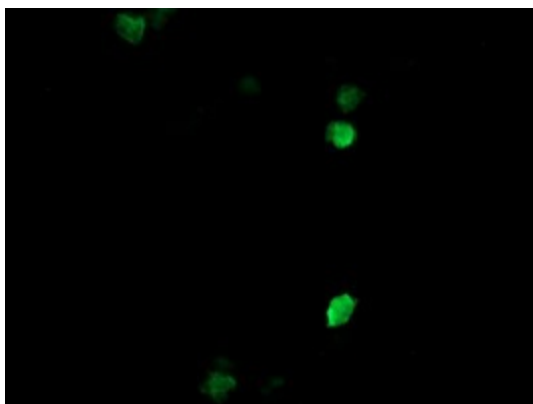
HEK293T cells were transfected with the pCMV6-ENTRY control (Cat# [PS100001], Left lane) or pCMV6-ENTRY COPS6 (Cat# [RC200252], Right lane) cDNA for 48 hrs and lysed. Equivalent amounts of cell lysates (5 ug per lane) were separated by SDS-PAGE and immunoblotted with anti-COPS6 (Cat# [TA505897]). Positive lysates [LY416378] (100ug) and [LC416378] (20ug) can be purchased separately from OriGene.



Immunohistochemical staining of paraffin-embedded Human Kidney tissue within the normal limits using anti-COPS6 mouse monoclonal antibody. (Heat-induced epitope retrieval by 10mM citric buffer, pH6.0, 120°C for 3min, [TA505897])



Immunohistochemical staining of paraffin-embedded Carcinoma of Human thyroid tissue using anti-COPS6 mouse monoclonal antibody. (Heat-induced epitope retrieval by 10mM citric buffer, pH6.0, 120°C for 3min, [TA505897])



Anti-COPS6 mouse monoclonal antibody ([TA505897]) immunofluorescent staining of COS7 cells transiently transfected by pCMV6-ENTRY COPS6 ([RC200252]).