

Product datasheet for **TA505626S**

DCPS Mouse Monoclonal Antibody [Clone ID: OTI4H8]

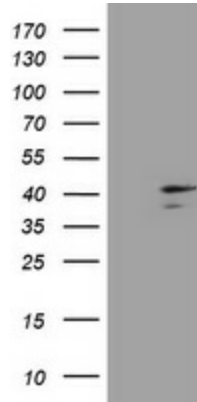
Product data:

Product Type:	Primary Antibodies
Clone Name:	OTI4H8
Applications:	IHC, WB
Recommended Dilution:	WB 1:2000, IHC 1:150
Reactivity:	Human, Mouse, Rat
Host:	Mouse
Isotype:	IgG1
Clonality:	Monoclonal
Immunogen:	Full length human recombinant protein of human DCPS (NP_054745) produced in HEK293T cell.
Formulation:	PBS (pH 7.3) containing 1% BSA, 50% glycerol and 0.02% sodium azide.
Concentration:	1 mg/ml
Purification:	Purified from mouse ascites fluids or tissue culture supernatant by affinity chromatography (protein A/G)
Conjugation:	Unconjugated
Storage:	Store at -20°C as received.
Stability:	Stable for 12 months from date of receipt.
Predicted Protein Size:	38.4 kDa
Gene Name:	decapping enzyme, scavenger
Database Link:	NP_054745 Entrez Gene 28960 Human Q96C86
Synonyms:	ARS; DCS1; HINT-5; HINT5; HSL1; HSPC015
Protein Pathways:	RNA degradation

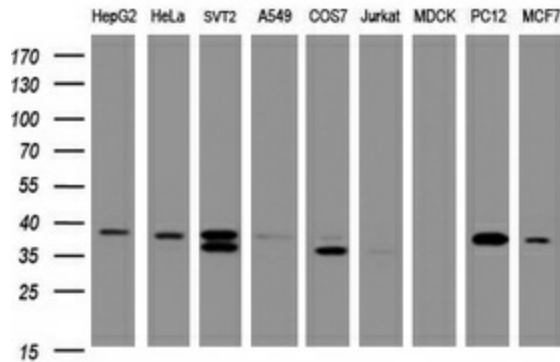


[View online »](#)

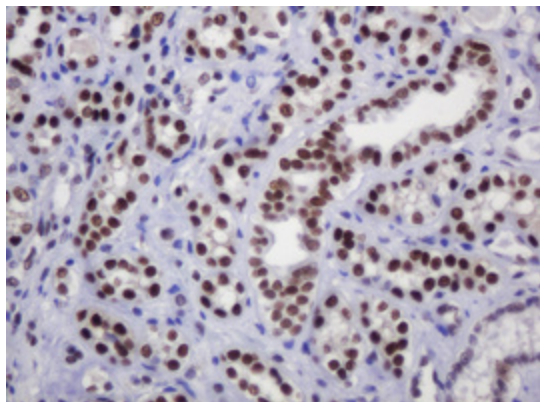
Product images:



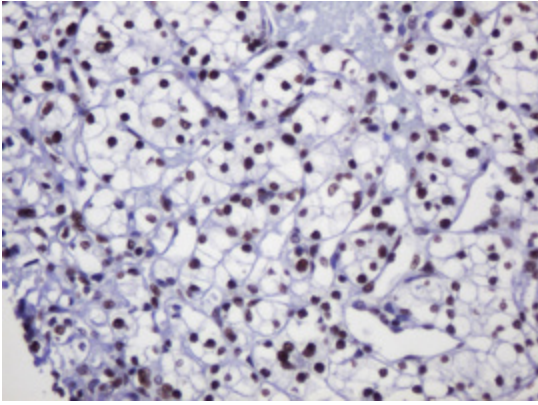
HEK293T cells were transfected with the pCMV6-ENTRY control (Left lane) or pCMV6-ENTRY DCPS ([RC203052], Right lane) cDNA for 48 hrs and lysed. Equivalent amounts of cell lysates (5 ug per lane) were separated by SDS-PAGE and immunoblotted with anti-DCPS. Positive lysates [LY415527] (100ug) and [LC415527] (20ug) can be purchased separately from OriGene.



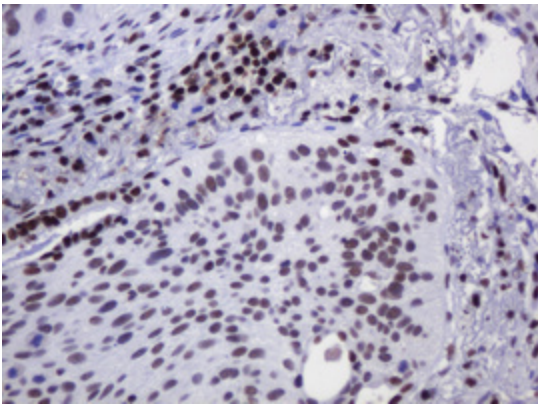
Western blot analysis of extracts (35ug) from 9 different cell lines by using anti-DCPS monoclonal antibody (HepG2: human; HeLa: human; SVT2: mouse; A549: human; COS7: monkey; Jurkat: human; MDCK: canine; PC12: rat; MCF7: human).



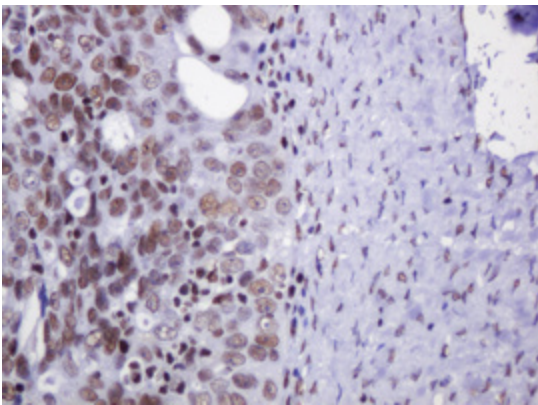
Immunohistochemical staining of paraffin-embedded Human Kidney tissue within the normal limits using anti-DCPS mouse monoclonal antibody. (Heat-induced epitope retrieval by 10mM citric buffer, pH6.0, 120°C for 3min, [TA505626])



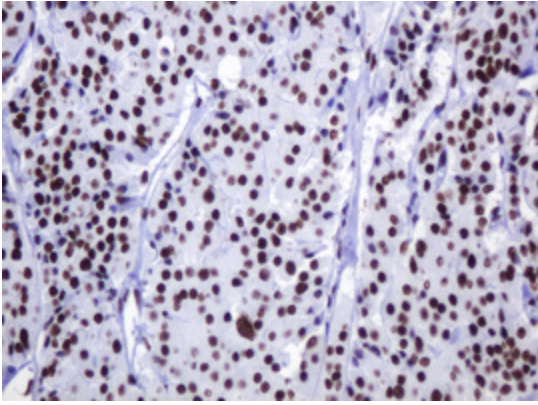
Immunohistochemical staining of paraffin-embedded Carcinoma of Human kidney tissue using anti-DCPS mouse monoclonal antibody. (Heat-induced epitope retrieval by 10mM citric buffer, pH6.0, 120°C for 3min, [TA505626])



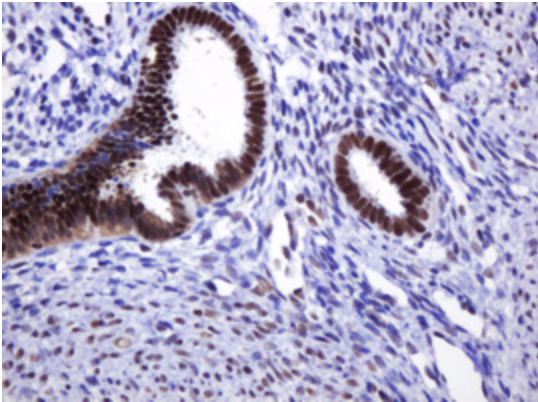
Immunohistochemical staining of paraffin-embedded Carcinoma of Human lung tissue using anti-DCPS mouse monoclonal antibody. (Heat-induced epitope retrieval by 10mM citric buffer, pH6.0, 120°C for 3min, [TA505626])



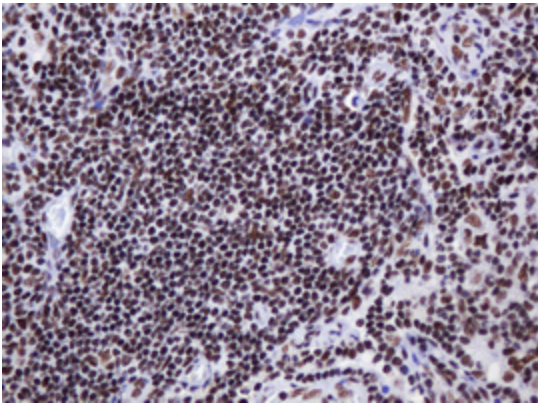
Immunohistochemical staining of paraffin-embedded Adenocarcinoma of Human ovary tissue using anti-DCPS mouse monoclonal antibody. (Heat-induced epitope retrieval by 10mM citric buffer, pH6.0, 120°C for 3min, [TA505626])



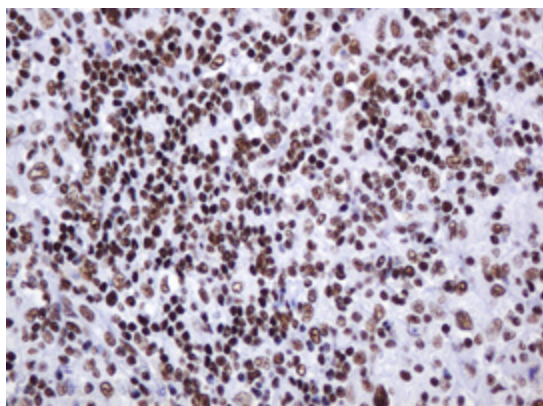
Immunohistochemical staining of paraffin-embedded Carcinoma of Human thyroid tissue using anti-DCPS mouse monoclonal antibody. (Heat-induced epitope retrieval by 10mM citric buffer, pH6.0, 120°C for 3min, [TA505626])



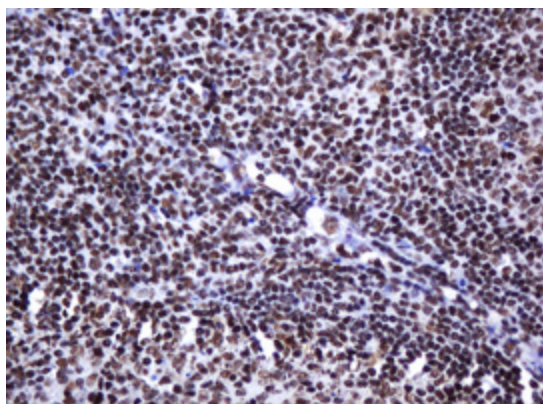
Immunohistochemical staining of paraffin-embedded Human endometrium tissue within the normal limits using anti-DCPS mouse monoclonal antibody. (Heat-induced epitope retrieval by 10mM citric buffer, pH6.0, 120°C for 3min, [TA505626])



Immunohistochemical staining of paraffin-embedded Human lymph node tissue within the normal limits using anti-DCPS mouse monoclonal antibody. (Heat-induced epitope retrieval by 10mM citric buffer, pH6.0, 120°C for 3min, [TA505626])



Immunohistochemical staining of paraffin-embedded Human lymphoma tissue using anti-DCPS mouse monoclonal antibody. (Heat-induced epitope retrieval by 10mM citric buffer, pH6.0, 120°C for 3min, [TA505626])



Immunohistochemical staining of paraffin-embedded Human tonsil within the normal limits using anti-DCPS mouse monoclonal antibody. (Heat-induced epitope retrieval by 10mM citric buffer, pH6.0, 120°C for 3min, [TA505626])