

## Product datasheet for **TA505578**

### PGD Mouse Monoclonal Antibody [Clone ID: OTI2A5]

#### Product data:

|                         |  |
|-------------------------|--|
| Product Type:           | Primary Antibodies   |
| Clone Name:             | OTI2A5   |
| Applications:           | IF, IHC, WB  |
| Recommended Dilution:   | WB 1:2000, IHC 1:150, IF 1:100   |
| Reactivity:             | Human, Mouse, Rat  |
| Host:                   | Mouse  |
| Isotype:                | IgG1   |
| Clonality:              | Monoclonal   |
| Immunogen:              | Full length human recombinant protein of human PGD(NP_002622) produced in HEK293T cell.  |
| Formulation:            | PBS (pH 7.3) containing 1% BSA, 50% glycerol and 0.02% sodium azide.   |
| Concentration:          | 1 mg/ml  |
| Purification:           | Purified from mouse ascites fluids or tissue culture supernatant by affinity chromatography (protein A/G)  |
| Conjugation:            | Unconjugated   |
| Storage:                | Store at -20°C as received.  |
| Stability:              | Stable for 12 months from date of receipt.   |
| Predicted Protein Size: | 53 kDa   |
| Gene Name:              | phosphogluconate dehydrogenase   |
| Database Link:          | <a href="#">NP_002622</a><br><a href="#">Entrez Gene 110208 MouseEntrez Gene 100360180 RatEntrez Gene 5226 Human P52209</a>  |
| Background:             | 6-phosphogluconate dehydrogenase is the second dehydrogenase in the pentose phosphate shunt. Deficiency of this enzyme is generally asymptomatic, and the inheritance of this disorder is autosomal dominant. Hemolysis results from combined deficiency of 6-phosphogluconate dehydrogenase and 6-phosphogluconolactonase suggesting a synergism of the two enzymopathies. [provided by RefSeq] |

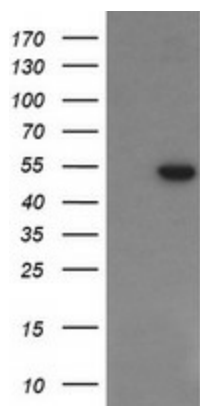


[View online »](#)

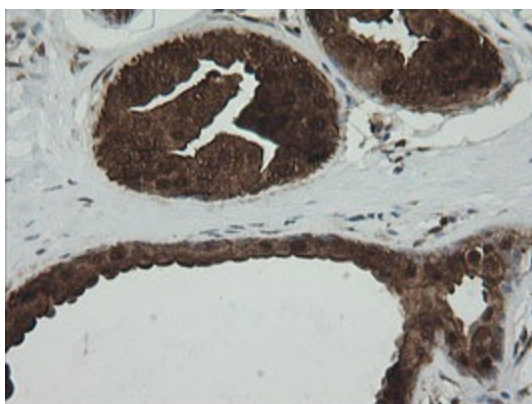
**Synonyms:** 6PGD

**Protein Pathways:** Glutathione metabolism, Metabolic pathways, Pentose phosphate pathway

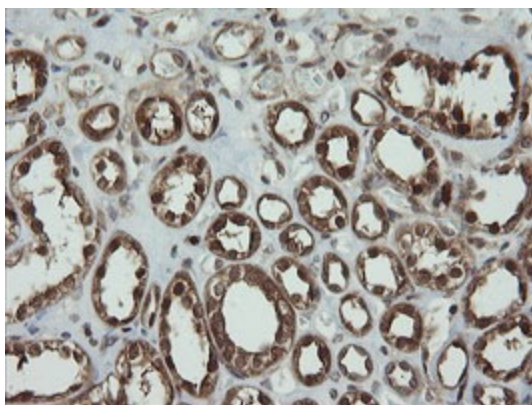
**Product images:**



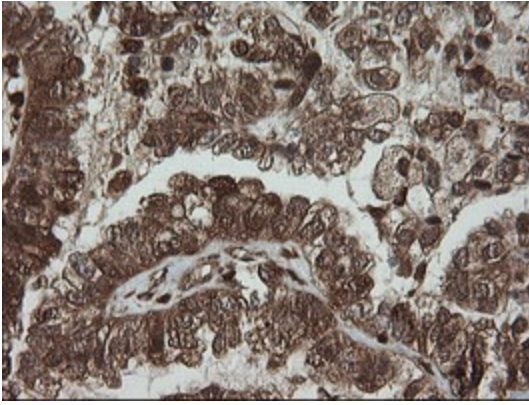
HEK293T cells were transfected with the pCMV6-ENTRY control (Cat# [PS100001], Left lane) or pCMV6-ENTRY PGD (Cat# [RC201729], Right lane) cDNA for 48 hrs and lysed. Equivalent amounts of cell lysates (5 ug per lane) were separated by SDS-PAGE and immunoblotted with anti-PGD (Cat# TA505578). Positive lysates [LY419202] (100ug) and [LC419202] (20ug) can be purchased separately from OriGene.



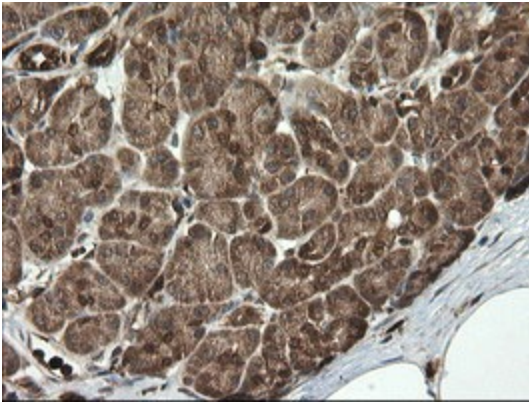
Immunohistochemical staining of paraffin-embedded Human breast tissue within the normal limits using anti-PGD mouse monoclonal antibody. (Heat-induced epitope retrieval by 10mM citric buffer, pH6.0, 100°C for 10min, TA505578)



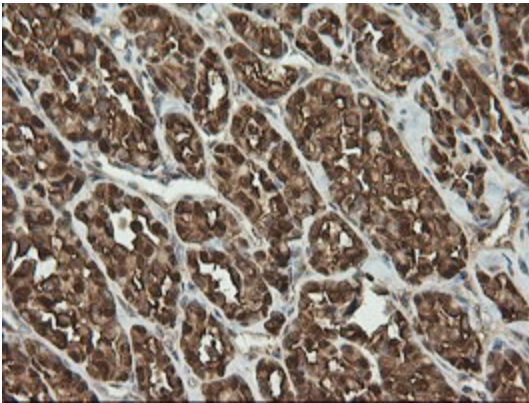
Immunohistochemical staining of paraffin-embedded Human Kidney tissue within the normal limits using anti-PGD mouse monoclonal antibody. (Heat-induced epitope retrieval by 10mM citric buffer, pH6.0, 100°C for 10min, TA505578)



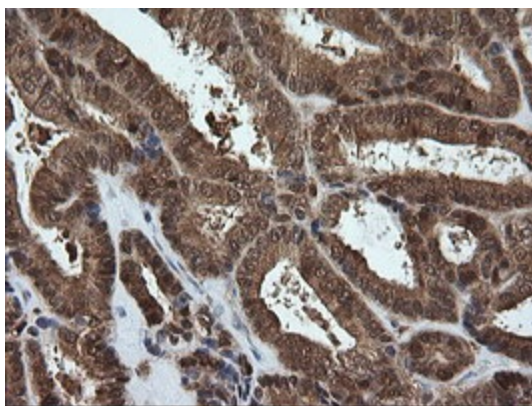
Immunohistochemical staining of paraffin-embedded Adenocarcinoma of Human ovary tissue using anti-PGD mouse monoclonal antibody. (Heat-induced epitope retrieval by 10mM citric buffer, pH6.0, 100°C for 10min, TA505578)



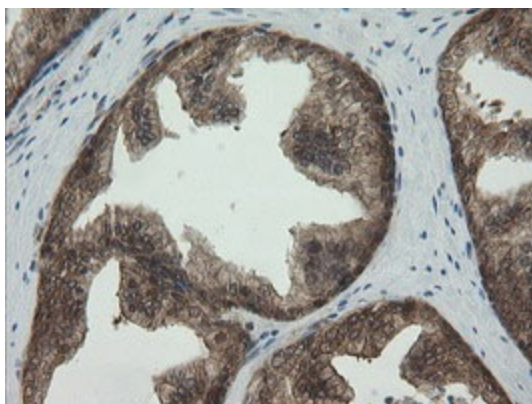
Immunohistochemical staining of paraffin-embedded Human pancreas tissue within the normal limits using anti-PGD mouse monoclonal antibody. (Heat-induced epitope retrieval by 10mM citric buffer, pH6.0, 100°C for 10min, TA505578)



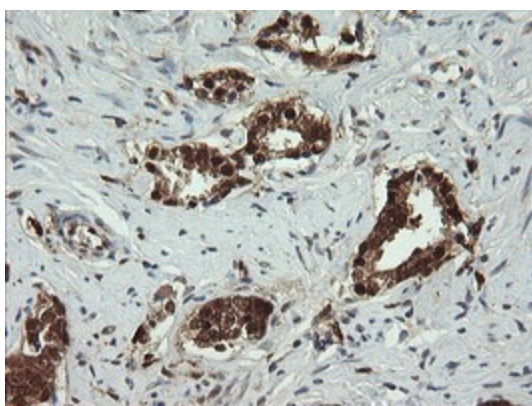
Immunohistochemical staining of paraffin-embedded Carcinoma of Human thyroid tissue using anti-PGD mouse monoclonal antibody. (Heat-induced epitope retrieval by 10mM citric buffer, pH6.0, 100°C for 10min, TA505578)



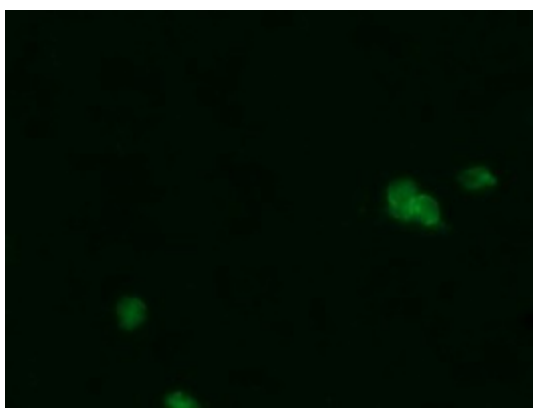
Immunohistochemical staining of paraffin-embedded Adenocarcinoma of Human endometrium tissue using anti-PGD mouse monoclonal antibody. (Heat-induced epitope retrieval by 10mM citric buffer, pH6.0, 100°C for 10min, TA505578)



Immunohistochemical staining of paraffin-embedded Human prostate tissue within the normal limits using anti-PGD mouse monoclonal antibody. (Heat-induced epitope retrieval by 10mM citric buffer, pH6.0, 100°C for 10min, TA505578)



Immunohistochemical staining of paraffin-embedded Carcinoma of Human prostate tissue using anti-PGD mouse monoclonal antibody. (Heat-induced epitope retrieval by 10mM citric buffer, pH6.0, 100°C for 10min, TA505578)



Anti-PGD mouse monoclonal antibody (TA505578) immunofluorescent staining of COS7 cells transiently transfected by pCMV6-ENTRY PGD ([RC201729]).