

Product datasheet for **TA505362**

MAGEA4 Mouse Monoclonal Antibody [Clone ID: OT11F9]

Product data:

Product Type:	Primary Antibodies
Clone Name:	OT11F9
Applications:	FC, IHC, WB
Recommended Dilution:	WB 1:4000, IHC 1:150
Reactivity:	Human
Host:	Mouse
Isotype:	IgG2a
Clonality:	Monoclonal
Immunogen:	Full length human recombinant protein of human MAGEA4(NP_001011550) produced in HEK293T cell.
Formulation:	PBS (pH 7.3) containing 1% BSA, 50% glycerol and 0.02% sodium azide.
Concentration:	1 mg/ml
Purification:	Purified from serum-free cell culture supernatant by affinity chromatography Protein A/G (from mouse hybridoma)
Conjugation:	Unconjugated
Storage:	Store at -20°C as received.
Stability:	Stable for 12 months from date of receipt.
Predicted Protein Size:	34.7 kDa
Gene Name:	MAGE family member A4
Database Link:	NP_001011550 Entrez Gene 4103 Human P43358



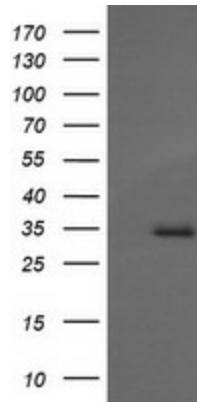
[View online »](#)

Background:

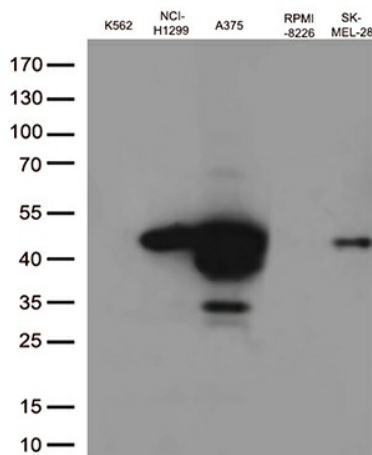
This gene is a member of the MAGEA gene family. The members of this family encode proteins with 50 to 80% sequence identity to each other. The promoters and first exons of the MAGEA genes show considerable variability, suggesting that the existence of this gene family enables the same function to be expressed under different transcriptional controls. The MAGEA genes are clustered at chromosomal location Xq28. They have been implicated in some hereditary disorders, such as dyskeratosis congenita. At least four variants encoding the same protein have been found for this gene. [provided by RefSeq, Jul 2008]

Synonyms:

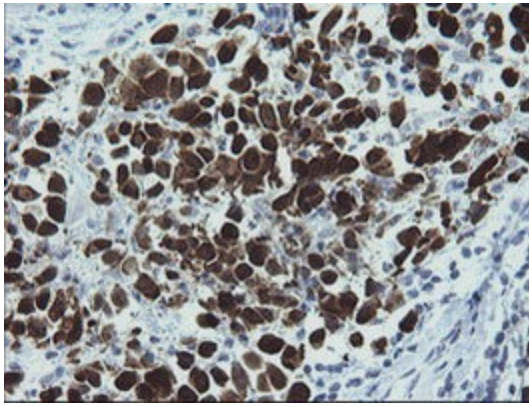
CT1.4; MAGE-41; MAGE-X2; MAGE4; MAGE4A; MAGE4B

Product images:


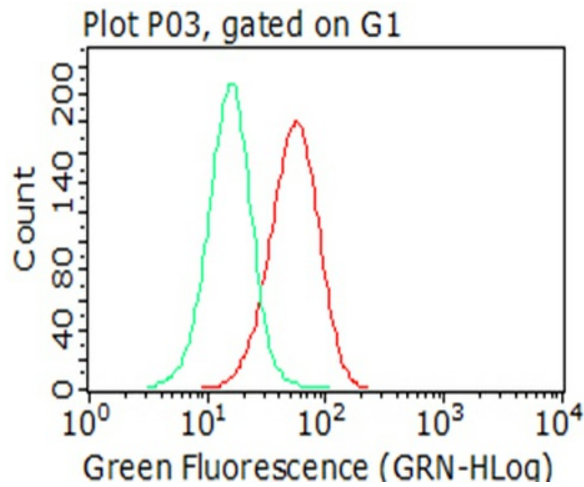
HEK293T cells were transfected with the pCMV6-ENTRY control (Cat# [PS100001], Left lane) or pCMV6-ENTRY MAGEA4 (Cat# [RC223991], Right lane) cDNA for 48 hrs and lysed. Equivalent amounts of cell lysates (5 ug per lane) were separated by SDS-PAGE and immunoblotted with anti-MAGEA4 (Cat# TA505362). Positive lysates [LY423276] (100ug) and [LC423276] (20ug) can be purchased separately from OriGene.



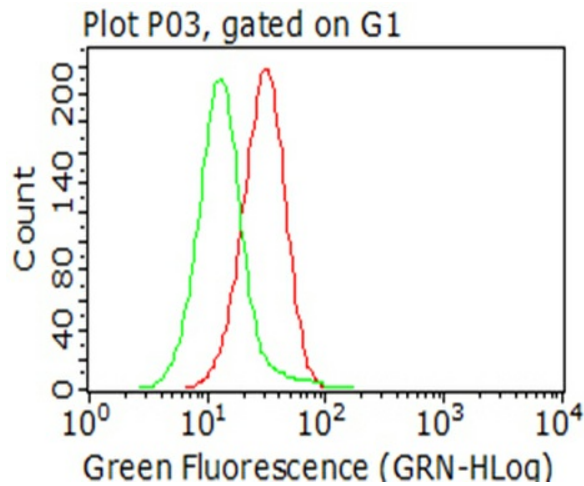
Western blot analysis of extracts (35ug) from 5 cell lines lysates by using anti-MAGEA4 monoclonal antibody (1:500).



Immunohistochemical staining of paraffin-embedded Carcinoma of Human bladder tissue using anti-MAGEA4 mouse monoclonal antibody. (Heat-induced epitope retrieval by 10mM citric buffer, pH6.0, 120°C for 3min, TA505362)



Flow cytometric analysis of fixed and permeabilized NCI-H1299 cells, using anti-MAGEA4 antibody (TA505362, Red), compared to an isotype control (green) (1:100).



Flow cytometric analysis of living A375 cells, using anti-MAGEA4 antibody (TA505362, Red), compared to an isotype control (green) (1:100).