

## Product datasheet for **TA505244**

### ATP6V1B2 Mouse Monoclonal Antibody [Clone ID: OTI1E11]

#### Product data:

Product Type:	Primary Antibodies
Clone Name:	OTI1E11
Applications:	IHC, WB
Recommended Dilution:	WB 1:2000, IHC 1:150
Reactivity:	Human, Mouse, Rat
Host:	Mouse
Isotype:	IgG2a
Clonality:	Monoclonal
Immunogen:	Full length human recombinant protein of human ATP6V1B2 (NP_001684) produced in HEK293T cell.
Formulation:	PBS (pH 7.3) containing 1% BSA, 50% glycerol and 0.02% sodium azide.
Concentration:	1 mg/ml
Purification:	Purified from mouse ascites fluids or tissue culture supernatant by affinity chromatography (protein A/G)
Conjugation:	Unconjugated
Storage:	Store at -20°C as received.
Stability:	Stable for 12 months from date of receipt.
Predicted Protein Size:	56.3 kDa
Gene Name:	ATPase H <sup>+</sup> transporting V1 subunit B2
Database Link:	<a href="#">NP_001684</a> <a href="#">Entrez Gene 11966 Mouse</a> <a href="#">Entrez Gene 526 Human</a> <a href="#">P21281</a>



[View online »](#)

**Background:**

This gene encodes a component of vacuolar ATPase (V-ATPase), a multisubunit enzyme that mediates acidification of eukaryotic intracellular organelles. V-ATPase dependent organelle acidification is necessary for such intracellular processes as protein sorting, zymogen activation, receptor-mediated endocytosis, and synaptic vesicle proton gradient generation. V-ATPase is composed of a cytosolic V1 domain and a transmembrane V0 domain. The V1 domain consists of three A, three B, and two G subunits, as well as a C, D, E, F, and H subunit. The V1 domain contains the ATP catalytic site. The protein encoded by this gene is one of two V1 domain B subunit isoforms and is the only B isoform highly expressed in osteoclasts. [provided by RefSeq, Jul 2008]

**Synonyms:**

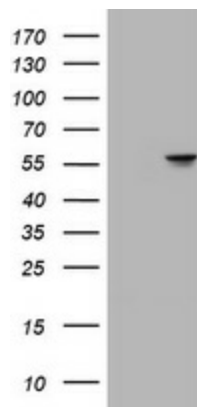
ATP6B1B2; ATP6B2; DOOD; HO57; VATB; Vma2; VPP3; ZLS2

**Protein Families:**

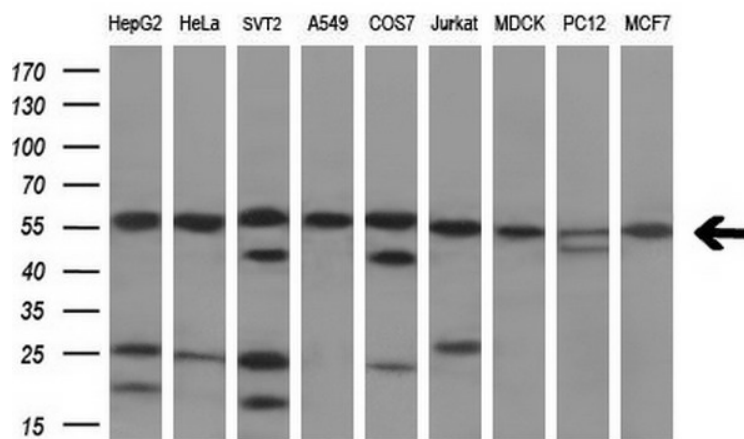
Druggable Genome

**Protein Pathways:**

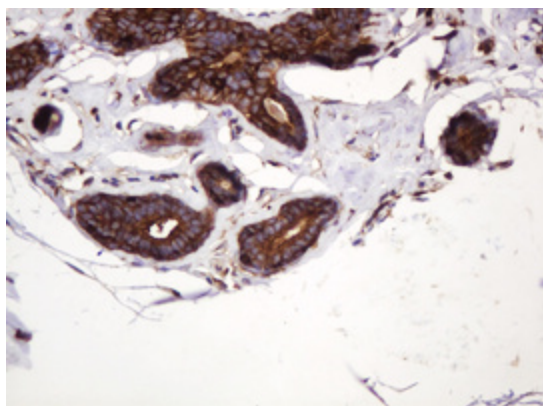
Epithelial cell signaling in Helicobacter pylori infection, Metabolic pathways, Oxidative phosphorylation, Vibrio cholerae infection

**Product images:**


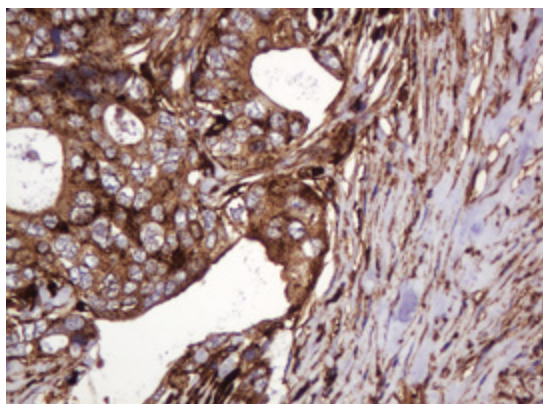
HEK293T cells were transfected with the pCMV6-ENTRY control (Cat# [PS100001], Left lane) or pCMV6-ENTRY ATP6V1B2 (Cat# [RC205447], Right lane) cDNA for 48 hrs and lysed. Equivalent amounts of cell lysates (5 ug per lane) were separated by SDS-PAGE and immunoblotted with anti-ATP6V1B2 (Cat# TA505244). Positive lysates [LY419793] (100ug) and [LC419793] (20ug) can be purchased separately from OriGene.



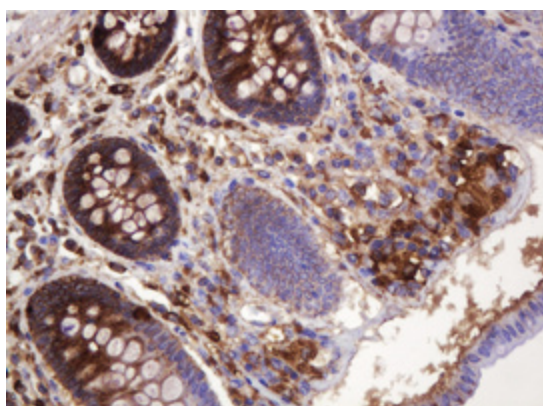
Western blot analysis of extracts (35ug) from 9 different cell lines by using anti-ATP6V1B2 monoclonal antibody (HepG2: human; HeLa: human; SVT2: mouse; A549: human; COS7: monkey; Jurkat: human; MDCK: canine; PC12: rat; MCF7: human) (1:200).



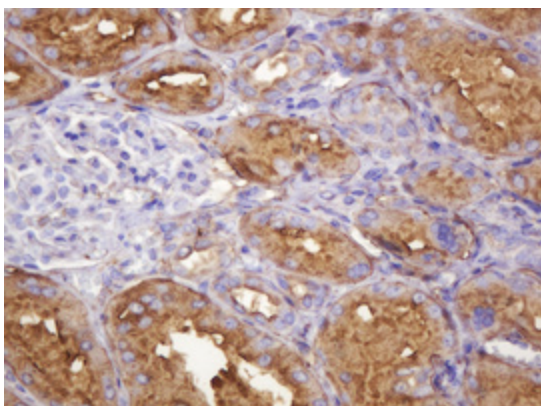
Immunohistochemical staining of paraffin-embedded Human breast tissue within the normal limits using anti-ATP6V1B2 mouse monoclonal antibody. (Heat-induced epitope retrieval by 10mM citric buffer, pH6.0, 120°C for 3min, TA505244)



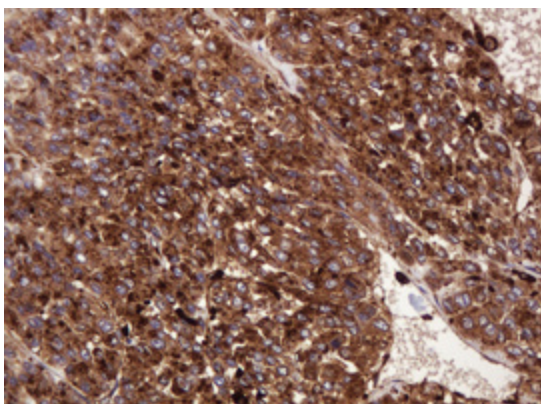
Immunohistochemical staining of paraffin-embedded Adenocarcinoma of Human breast tissue using anti-ATP6V1B2 mouse monoclonal antibody. (Heat-induced epitope retrieval by 10mM citric buffer, pH6.0, 120°C for 3min, TA505244)



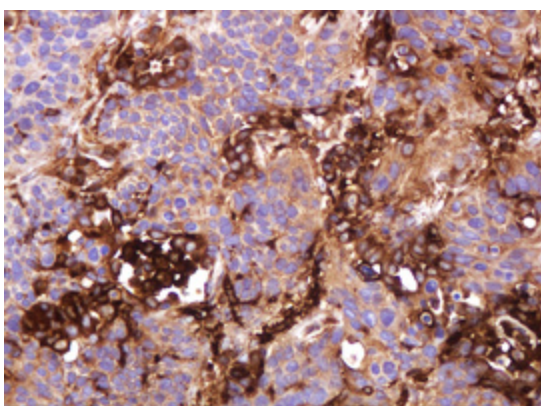
Immunohistochemical staining of paraffin-embedded Human colon tissue within the normal limits using anti-ATP6V1B2 mouse monoclonal antibody. (Heat-induced epitope retrieval by 10mM citric buffer, pH6.0, 120°C for 3min, TA505244)



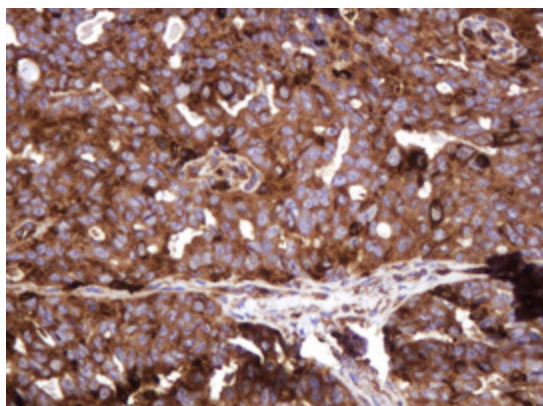
Immunohistochemical staining of paraffin-embedded Human Kidney tissue within the normal limits using anti-ATP6V1B2 mouse monoclonal antibody. (Heat-induced epitope retrieval by 10mM citric buffer, pH6.0, 120°C for 3min, TA505244)



Immunohistochemical staining of paraffin-embedded Carcinoma of Human liver tissue using anti-ATP6V1B2 mouse monoclonal antibody. (Heat-induced epitope retrieval by 10mM citric buffer, pH6.0, 120°C for 3min, TA505244)



Immunohistochemical staining of paraffin-embedded Carcinoma of Human lung tissue using anti-ATP6V1B2 mouse monoclonal antibody. (Heat-induced epitope retrieval by 10mM citric buffer, pH6.0, 120°C for 3min, TA505244)



Immunohistochemical staining of paraffin-embedded Adenocarcinoma of Human ovary tissue using anti-ATP6V1B2 mouse monoclonal antibody. (Heat-induced epitope retrieval by 10mM citric buffer, pH6.0, 120°C for 3min, TA505244)