

## Product datasheet for **TA505210S**

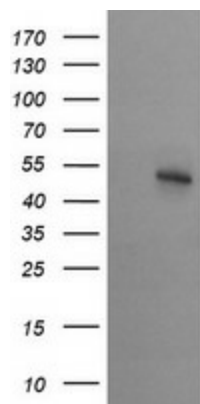
### STK38L Mouse Monoclonal Antibody [Clone ID: OTI3E10]

#### Product data:

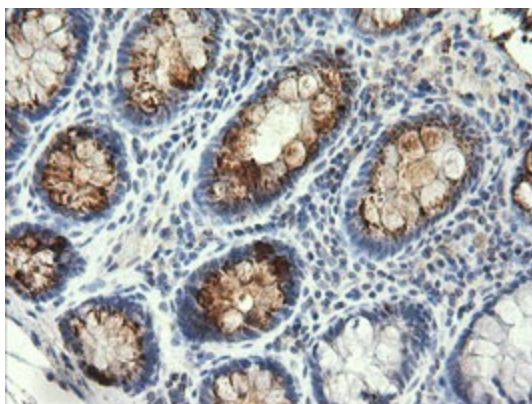
Product Type:	Primary Antibodies
Clone Name:	OTI3E10
Applications:	IHC, WB
Recommended Dilution:	WB 1:2000, IHC 1:150
Reactivity:	Human, Mouse, Rat
Host:	Mouse
Isotype:	IgG2a
Clonality:	Monoclonal
Immunogen:	Human recombinant protein fragment corresponding to amino acids 1-281 of human STK38L(NP_055815) produced in E.coli.
Formulation:	PBS (pH 7.3) containing 1% BSA, 50% glycerol and 0.02% sodium azide.
Concentration:	1 mg/ml
Purification:	Purified from mouse ascites fluids or tissue culture supernatant by affinity chromatography (protein A/G)
Conjugation:	Unconjugated
Storage:	Store at -20°C as received.
Stability:	Stable for 12 months from date of receipt.
Predicted Protein Size:	53.8 kDa
Gene Name:	serine/threonine kinase 38 like
Database Link:	<a href="#">NP_055815</a> <a href="#">Entrez Gene 232533 Mouse</a> <a href="#">Entrez Gene 691337 Rat</a> <a href="#">Entrez Gene 23012 Human</a> <a href="#">Q9Y2H1</a>
Synonyms:	NDR2
Protein Families:	Druggable Genome, Protein Kinase



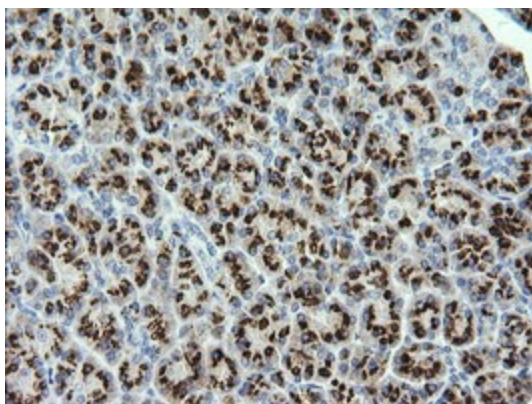
[View online »](#)

**Product images:**

HEK293T cells were transfected with the pCMV6-ENTRY control (Left lane) or pCMV6-ENTRY STK38L [RC206074], Right lane) cDNA for 48 hrs and lysed. Equivalent amounts of cell lysates (5 ug per lane) were separated by SDS-PAGE and immunoblotted with anti-STK38L. Positive lysates [LY414864] (100ug) and [LC414864] (20ug) can be purchased separately from OriGene.



Immunohistochemical staining of paraffin-embedded Human colon tissue within the normal limits using anti-STK38L mouse monoclonal antibody. (Heat-induced epitope retrieval by 10mM citric buffer, pH6.0, 120°C for 3min, [TA505210])



Immunohistochemical staining of paraffin-embedded Human pancreas tissue within the normal limits using anti-STK38L mouse monoclonal antibody. (Heat-induced epitope retrieval by 10mM citric buffer, pH6.0, 120°C for 3min, [TA505210])