

Product datasheet for **TA505114S**

NDUFB10 Mouse Monoclonal Antibody [Clone ID: OTI2B4]

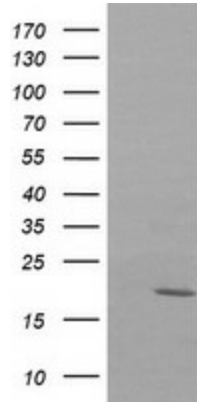
Product data:

Product Type:	Primary Antibodies
Clone Name:	OTI2B4
Applications:	IF, IHC, WB
Recommended Dilution:	WB 1:200~1000, IHC 1:150, IF 1:100
Reactivity:	Human, Dog, Rat, Monkey, Mouse
Host:	Mouse
Isotype:	IgG1
Clonality:	Monoclonal
Immunogen:	Full length human recombinant protein of human NDUFB10(NP_004539) produced in E.coli.
Formulation:	PBS (pH 7.3) containing 1% BSA, 50% glycerol and 0.02% sodium azide.
Concentration:	1 mg/ml
Purification:	Purified from mouse ascites fluids or tissue culture supernatant by affinity chromatography (protein A/G)
Conjugation:	Unconjugated
Storage:	Store at -20°C as received.
Stability:	Stable for 12 months from date of receipt.
Predicted Protein Size:	20.6 kDa
Gene Name:	NADH:ubiquinone oxidoreductase subunit B10
Database Link:	NP_004539 Entrez Gene 68342 Mouse Entrez Gene 681418 Rat Entrez Gene 479887 Dog Entrez Gene 693482 Monkey Entrez Gene 4716 Human O96000
Synonyms:	PDSW
Protein Pathways:	Alzheimer's disease, Huntington's disease, Metabolic pathways, Oxidative phosphorylation, Parkinson's disease

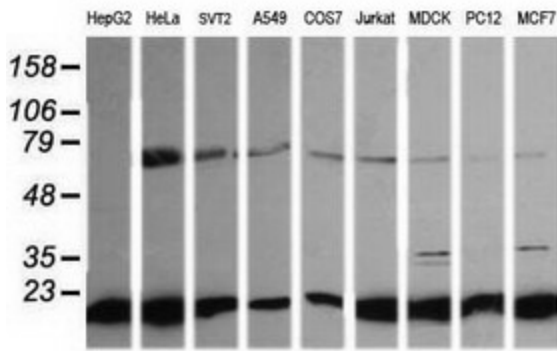


[View online »](#)

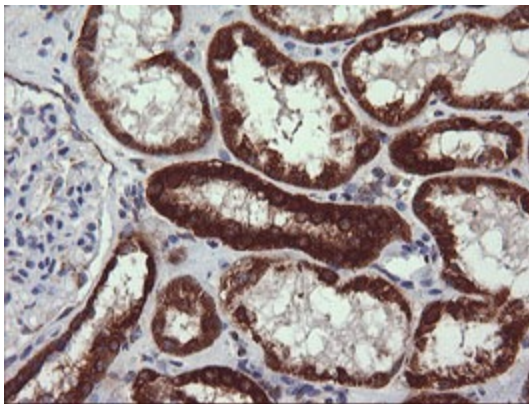
Product images:



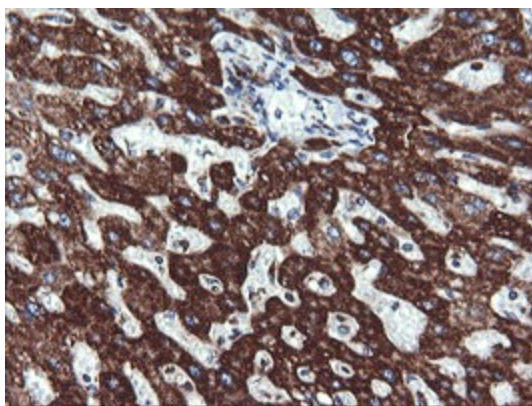
HEK293T cells were transfected with the pCMV6-ENTRY control (Left lane) or pCMV6-ENTRY NDUFB10 ([RC200526], Right lane) cDNA for 48 hrs and lysed. Equivalent amounts of cell lysates (5 ug per lane) were separated by SDS-PAGE and immunoblotted with anti-NDUFB10. Positive lysates [LY417917] (100ug) and [LC417917] (20ug) can be purchased separately from OriGene.



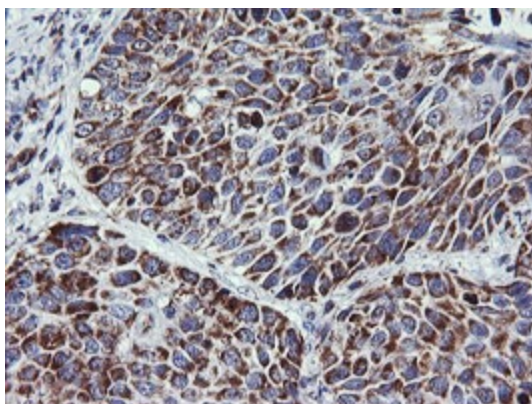
Western blot analysis of extracts (35ug) from 9 different cell lines by using anti-NDUFB10 monoclonal antibody (HepG2: human; HeLa: human; SVT2: mouse; A549: human; COS7: monkey; Jurkat: human; MDCK: canine; PC12: rat; MCF7: human).



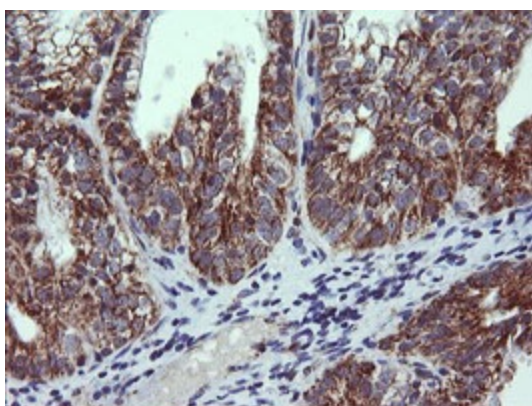
Immunohistochemical staining of paraffin-embedded Human Kidney tissue within the normal limits using anti-NDUFB10 mouse monoclonal antibody. (Heat-induced epitope retrieval by 10mM citric buffer, pH6.0, 120°C for 3min, [TA505114])



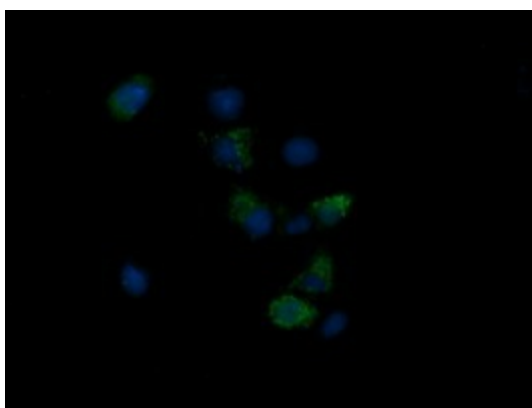
Immunohistochemical staining of paraffin-embedded Human liver tissue within the normal limits using anti-NDUFB10 mouse monoclonal antibody. (Heat-induced epitope retrieval by 10mM citric buffer, pH6.0, 120°C for 3min, [TA505114])



Immunohistochemical staining of paraffin-embedded Carcinoma of Human lung tissue using anti-NDUFB10 mouse monoclonal antibody. (Heat-induced epitope retrieval by 10mM citric buffer, pH6.0, 120°C for 3min, [TA505114])



Immunohistochemical staining of paraffin-embedded Adenocarcinoma of Human ovary tissue using anti-NDUFB10 mouse monoclonal antibody. (Heat-induced epitope retrieval by 10mM citric buffer, pH6.0, 120°C for 3min, [TA505114])



Anti-NDUFB10 mouse monoclonal antibody ([TA505114]) immunofluorescent staining of COS7 cells transiently transfected by pCMV6-ENTRY NDUFB10 ([RC200526]).